

# RANGE Programme

## Quarterly Newsletter

March 2026



### INSIDE THIS ISSUE

- Programme Director's Note
- Year 2 achievements
- Mercy Corps rebrand
- Information resources

#### Highlight of the Quarter



In collaboration with the County Departments of Trade, Livestock, and Social Services, Mercy Corps—through the PRIME, Mobility & Movement, and RANGE programs—in partnership with PACIDA, recently facilitated a VSLA Forum in Maikona Ward, bringing together 32 Village Savings and Loan Association (VSLA) groups.



A key milestone from the engagement was the formation of an **APEX Committee** which will serve as a unified structure to represent VSLA members, advocate for their interests, and strengthen coordination across the different groups.

#### Key Information

**RANGE Programme Consortium:** Mercy Corps, Frontier Counties Development Council (FCDC), and the Faculty of Geo-Information Science and Earth Observation, University of Twente (ITC)

**Local Implementing Partners:** IMPACT (Samburu), MID-P (Isiolo), PACIDA (Samburu and Marsabit), and SND (Marsabit).

**Lead firm private sector partners:** SIDAI (animal health), Holland GreenTech Kenya (climate-smart agriculture), Savanna Circuit Technologies (renewable energy) and GENCO Livestock & Fresh Meat Export (market access).

#### Mercy Corps will become Prosper Global

Beginning September 2026, Mercy Corps will change its name to **Prosper Global**. Our commitment to the communities we serve remains as strong as ever.

# Programme Director's Note

We are pleased to introduce the inaugural edition of the RANGE Quarterly Newsletter—an important platform to share learning, progress, and impact from across our programme.

This edition highlights key Year 2 (2025) achievements, including the strengthening of private sector partnerships that have unlocked market opportunities, leveraged investment, and enhanced livelihoods. Notably, the programme has facilitated structured market linkages, supported over 5,700 participants, restored 241 acres of rangeland, and catalyzed over KES 35 million in private sector investment, underscoring our commitment to sustainable, market-driven resilience.

We would like to sincerely thank all our stakeholders who have contributed to these successes, including the County Governments of Samburu, Isiolo, and Marsabit, our implementing partners, and the communities we serve. Your continued collaboration and support are vital to achieving the positive impact we aim for across the rangelands.

As we share these milestones, we also take note of Mercy Corps' refreshed global direction. The new brand, Prosper Global, will become effective in September 2026. Until then, we will continue operating under the name Mercy Corps while preparing for this exciting transition. We encourage you to explore the official communication on the Prosper Global ambition, which continues to shape our collective vision for resilient and inclusive development. by clicking [here](#).

We are proud to also share news of the RANGE brand identity, which will serve as a visual and conceptual anchor for our work, highlighting the transformative impact we aim to achieve across the rangelands. Additionally, we are excited to share the [RANGE landing page](#), where you can access all information about our programme and the products we develop.

We look forward to using this newsletter as a space for continued reflection, collaboration, and shared impact.

Bonface Kaberia  
Programme Director – RANGE



RANGE Programme team, including Consortium and Local Implementing Partners during an onboarding session in Isiolo County - Kenya

# Achievements

## Improved rangeland management repairs ecosystem health and increases food, nutrition, and water security.

A key milestone in Year 2 was the restoration of **241 acres of degraded rangeland across Isiolo, Marsabit, and Samburu. Through resilience design approaches**, invasive species management, and strengthened community governance systems, the programme supported more sustainable use of natural resources. This work not only improved ecosystem health but also enhanced livestock productivity and food security, with coordinated grazing and restoration efforts benefiting thousands of pastoralists and their herds. Other achievements include:

- Strengthening governance of Water Resource Users Associations (WRUAs), with 108 members trained on water management and climate-smart practices
- Supporting sub-catchment management planning, including resource allocation for climate-resilient water infrastructure
- Advanced climate risk management through participatory scenario planning, integrating indigenous and scientific knowledge



Insenne resilience design farm before and after the MAM rains.

## Sustainable livestock and alternative livelihood production and competitiveness of markets strengthened within an improved policy environment.



Genco Livestock offtake through Local community Aggregation Centre in Daaba, Ngaremara ward



Laisamis ward- Genco Community training outreaches and offtake.

The programme made significant strides in catalyzing private sector investment, **leveraging over KES 35.7 million to strengthen livestock and market systems. By onboarding key lead firms and facilitating co-creation with market actors, RANGE expanded access to animal health services, climate-smart agriculture, and structured market linkages.** These partnerships are unlocking sustainable, market-driven opportunities for pastoralist communities while improving productivity, efficiency, and resilience across value chains.

Other achievements include:

- Onboarded 4 private sector lead firms to strengthen animal health, climate-smart agriculture, renewable energy, and market access
- Facilitated structured market linkages for 890 producers
- Supported sale of 2,507 sheep and goats, generating over KES 12 million
- Trained 150 livestock producers on market-oriented herd management
- Linked 369 VSLA members to financial institutions to improve access to finance
- Strengthened alternative livelihoods, including fodder production and apiculture value chain

# Achievements

**Improved linkages among and between communities and government structures to support collaboration on economic, environmental, and social issues promote stability and sustained.**



**A reformed Moran sharing his story on how the RANGE Program's peace component positively impacted his life during the EKN field visit.**



**Ward Development Committee (WDC) members engage with county stakeholders in Laisamis ward.**

A standout achievement was the **formalization of community-led peace and resource-sharing frameworks, including the Sabarwawa Communiqué and the KOM Triangle Resource Sharing Agreement.** These agreements strengthened collaboration between communities and government actors, promoting peaceful and equitable access to shared natural resources. Through inclusive dialogues engaging over 2,300 participants, the programme reinforced local ownership of conflict prevention mechanisms and contributed to improved social cohesion across historically conflict-prone areas.

Other achievements include:

- Engaged 2,350 participants in peacebuilding dialogues, promoting social cohesion and conflict resolution
- Trained 214 pastoralist representatives on advocacy and lobbying
- Established and strengthened multi-stakeholder coordination platforms for planning and policy engagement
- Initiated Public-Private Partnership (PPP) frameworks and investment guides to enhance the enabling environment

---

**Strengthened research and evidence-based programming to support impactful implementation, coordination, early warning and early action, innovation, and learning.**

In Year 2, the programme advanced **evidence-based programming by strengthening research and data systems, including the deployment of innovative infrastructure such as livestock-tracking technologies and climate-data tools.** Alongside capacity building for county officials in geospatial analysis, and progress in PhD and MSc research, these efforts are enhancing data-driven decision-making, improving early warning systems, and positioning the programme to generate actionable insights for long-term resilience and adaptive management. Other achievements include:

- Advanced PhD and MSc research programmes, supporting evidence generation
- Established a digital knowledge repository to strengthen coordination and knowledge sharing
- Strengthened Monitoring, Evaluation and Learning (MEL) systems to improve data quality, reporting, and adaptive management



**Geospatial training at Marsabit**



**Benjamin, a PhD Student carrying out a participatory mapping exercise with Kalama rangers**

# Resources



## RANGE Programme Year 2 Impact Brief

5787

Direct Participants Reached in year 2, achieving 109% of the annual target of 5,305



241  
acres

### Rangeland Restoration

Degraded rangelands restored using Resilience Design and sustainable land management practice in Marsabit, Samburu and, Isiolo Counties



4  
Local  
Partners

### Local Implementing Partners

Onboarded for implementation. These are, IMPACT (Samburu), MID-P (Isiolo), PACIDA (Samburu and Marsabit), and SND (Marsabit)



153  
Community  
Members

### Climate Risk Management

Engaged in participatory scenario planning workshops to integrate indigenous knowledge with scientific climate forecasts for improved climate risk management.



35.7m  
Kenya  
Shillings

### Private Sector Engagement

Leveraged in Private Sector Investment. 4 private sector firms onboarded in animal health (SIDAI), climate-smart agriculture (Holland GreenTech Kenya), renewable energy (Savanna Circuit Technologies), and market access for dairy (GENCO Livestock & Fresh Meat Export)



369  
Members

### Financial Inclusion & Access

Village Savings and Loans Associations (VSLA) members were linked to financial institutions to improve access to finance



890  
Producers

### Market Access & Training

Received structured market linkages. 150 livestock producers received market-oriented herd management training. 171 participants trained on herd and animal health.



2350  
Community  
Members

### Peace building

Engaged in peace dialogues. The Sabarwawa Communiqué and KOM Triangle Resource Sharing Agreement, witnessed by county and national governments, reinforced local ownership of conflict prevention and early warning mechanisms.



214  
Pastoralist  
Groups

### Advocacy and Leadership

Representatives trained on advocacy and lobbying. 3 pastoralist associations developed advocacy plans. 669 participants from local institutions trained on leadership, resource mobilisation, and other priority competencies.



12  
Committees

### Inclusive Planning

Ward Development Committees (WDCs) were trained on inclusive participatory planning and linked to county executives to prioritise ward plans for engagement.



25  
County  
Officials

### Rangeland Restoration

Trained and equipped with essential Geographical Information Services (GIS) competencies to support data-driven decision-making



Data  
readiness

### Research infrastructure

Research equipment deployed, including a LoRaWAN sensor network designed for livestock tracking and meteorological data acquisition, enabling improved data capture for longitudinal analysis.



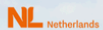
5  
Proposals

### Postgraduate Research

Completed at Doctor of Philosophy (PhD.) level. PhD students returned to Kenya to commence field data collection. Three (3) MSc candidates defended proposals and participated in internships

Follow us on X: @RANGEProgramme

Contact us: Bonface Kaberia | Programme Director | bkaberia@mercy Corps.org



## Impact Brief: Holland Greentech Kenya Private Sector Partner - RANGE Programme



2 demonstration plots established in Baawa - Samburu County and Burat Wards - Isiolo County



1 Greenhouse in Baawa - Samburu, repaired



Soil analysis conducted and appropriate crops selected - tomatoes (Isiolo), capsicum, and cabbage (Samburu)



Seedling transplantation and organic manure application conducted



Comprehensive training and marketing plans formulated.



180

Farmers trained on nursery management and site selection in Isiolo and Samburu - (This covers 2026 numbers too)

### Partnership Value



KES 11,201,244  
Co-financed by  
Mercy Corps and Holland  
Greentech Kenya

### Milestone Progress



I am quite impressed with the work that Holland Greentech has done on my farm. They have trained us on selecting quality tomato seeds that are acceptable and growing in demand. The drip irrigation technique they implemented has helped us save on water and fuel used to pump. I have tasted the tomato from our first harvest and it is very sweet. Our minds have been opened and we are very happy.

Jackson Mikelina  
Lead Farmer, Burat Demo Farm - Isiolo

# Resources



## Resilient Approaches in Natural Rangeland Ecosystems

### Goal:

To strengthen the resilience of the ASAL communities that contributes to sustainable economic and social development in a well-managed landscape.



#### DONOR

Embassy of the Kingdom of the Netherlands



#### DURATION

5yrs (January 2024 to December 2028)



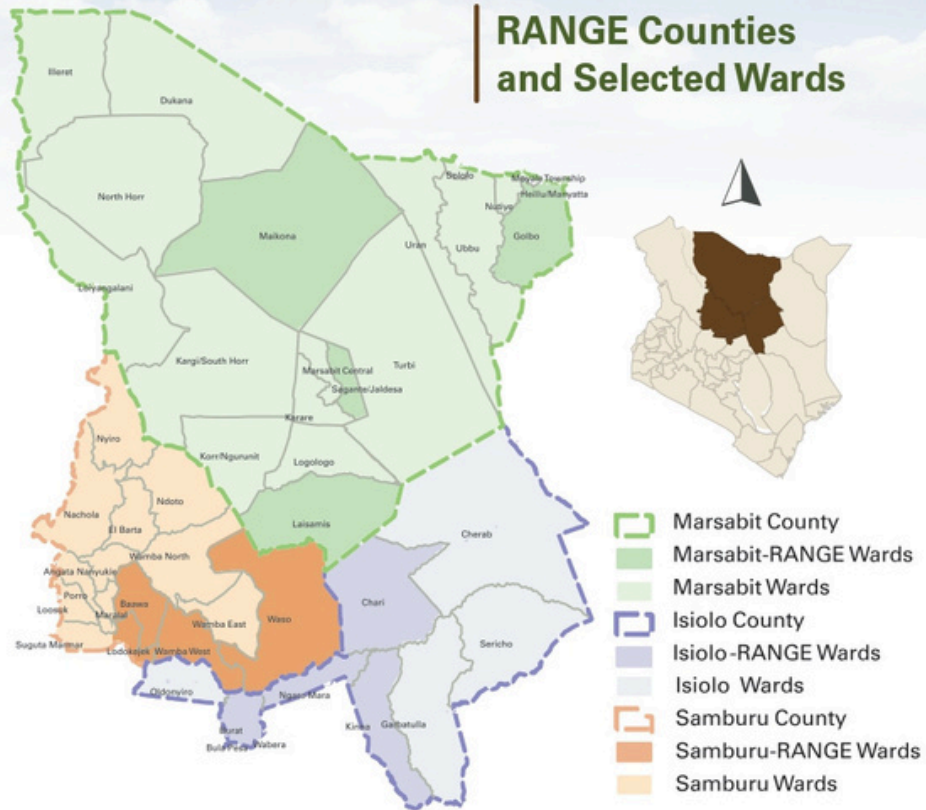
#### BUDGET

Euros 15 million



#### TARGETS

507,467 Small scale pastoralists & agro-pastoralists through Producer associations, Private sector actors & development partners (LIP, Consortium partners etc)



FACTSHEET

### Programme Context

In the fragile context of the Arid and Semi-Arid Lands (ASALs), livestock is the primary economic sector that populations rely on. Yet even with decades of investment, growth remains a challenge as the sector struggles to function within a complex landscape of shocks and stresses, including climate change, floods, pests, and disease, many furthering cycles of land degradation and soil erosion, that in turn compromise

livelihoods and productivity and increase levels of conflict. Despite these challenges, livestock remains the most important and most immediate lever for improved food security, nutrition and resilience for small-scale pastoral and agro-pastoral inhabitants of the ASALs. Finding sustainable pathways to improve the overall functioning of the livestock sector is necessary for sustained economic growth in the region.

### Programme Description

Resilient Approaches in Natural Rangeland Ecosystems (RANGE) is a five-year (2024-2028) programme funded by the Embassy of the Kingdom of the Netherlands. The programme goal is to strengthen the resilience of the ASAL communities that contribute to sustainable economic and social development in a well-managed landscape. In order to achieve this, RANGE will primarily focus on the livestock sector as the most immediate driver of improved resilience,

while also building support for alternative livelihoods and appropriate agro-pastoralism approaches.

RANGE will target a diverse array of stakeholders, including community members (women and youth; livestock owners; ward planning committees), government stakeholders (national, county and ward-level), private sector actors, peace-building structures, land management structures, development partners, research and policy agencies and financial institutions, among others.



# Resources

## FACT SHEET

### Technical Approach

RANGE employs the Resilience Framework and the Market systems Development Approach in the implementation. Through use of analytics to inform interventions strategy, RANGE Engages existing actors-private firms, NGOs or government agencies to identify market system key

constraints/weaknesses e.g. Missing services, accessibility, quality of inputs, economies of scale etc. Bad relationships between farmers and traders and Risk mitigation opportunities for incentivizing, crowding market actors. With actors' pilot and scale up successful business models.

### Outcome Areas

- |                     |  |
|---------------------|--|
| <b>1</b><br>OUTCOME | Improved rangeland management repairs ecosystem health and increases food, nutrition and water security.   |
| <b>2</b><br>OUTCOME | Sustainable livestock and alternative livelihood production and competitiveness of markets strengthened within an improved policy environment.   |
| <b>3</b><br>OUTCOME | Improved linkages among and between communities and government structures to support collaboration on economic, environmental, and social issues promote stability and sustained development.                        |
| <b>4</b><br>OUTCOME | Strengthened Research and evidence-based programming contribute to impactful project implementation, effective coordination, early warning and early action, innovation and learning for resilient ASAL communities. |



### About the RANGE Consortium and other Partners

The RANGE consortium brings together a multi-sectoral team with the strengths to achieve our ambitious goals and promote systemic transformation across the three counties. The consortium comprises Mercy Corps together with Frontier Counties Development Council (FCDC), and the Faculty of Geo-Information Science and Earth Observation, University of Twente (ITC). Through Mercy Corps, RANGE is working with

Local Implementing Partners across Samburu, Marsabit, and Isiolo Counties, namely IMPACT (Samburu), PACIDA (Samburu and Marsabit), SND (Marsabit) and MID-P (Isiolo). Additionally, RANGE is also working with private sector partners namely Holland Greentech Kenya, Savanna Circuit Technologies and Sidai Africa.



### Contact

BONFACE KABERIA | Programme Director, RANGE | [bkaberia@mercy Corps.org](mailto:bkaberia@mercy Corps.org)



Credit: Mercy Corps

## **Mercy Corps will become Prosper Global beginning September 2026**

In March 2026 Mercy Corps publicly announced that later this year, Mercy Corps will become Prosper Global.

This evolution reflects who we are today and the future we are building with communities affected by crisis, conflict, and climate shocks. Our new name centers our purpose: supporting people and communities not only to withstand crisis, but to prosper and shape their own future. It reflects our core belief that when every community can prosper, humanity moves forward together.

In a period defined by converging crises and rapid global change, Mercy Corps has been evolving — sharpening our strategic focus, strengthening how we operate, and deepening our commitment to innovation, locally led solutions, and sustainable impact at scale. Our new identity is the outward expression of that evolution and provides a clearer, more globally resonant platform for partnership and impact.

Our mission, programs, and commitment to collaboration remain unchanged. Our legal entity and existing agreements remain fully intact, and our joint initiatives will continue without interruption.

**We will continue operating as Mercy Corps in the coming months, with a phased transition to Prosper Global across our global footprint beginning in September 2026.**

You can learn more about the announcement and Prosper Global here: [www.mercycorps.org/prosperglobal](https://www.mercycorps.org/prosperglobal)



## Upcoming Key Meetings

- Quarterly Review Meeting - April 2026
- Learning Strategy Session - TBD




### Do you have any feedback on RANGE Program Activities?

IF YOU SEE SOMETHING, SAY SOMETHING.

If you experience, observe, or suspect any sexual exploitation, harassment or abuse, child abuse, fraud, corruption, bullying, discrimination or other code of conduct violation by any RANGE Program team member or partner please report your concerns.

((SPEAK))  
OUT!  
YOUR VOICE MATTERS

#### Talk to Us

 <b>CALL US (FREE)</b> 0800-720-761	 <b>SMS OR WHATSAPP ONLY</b> 0113-162-944	 <b>EMAIL</b> <a href="mailto:car kenya@mercy corps.org">car kenya@mercy corps.org</a>
 <b>SUGGESTION BOX</b>	 <b>VISIT OUR NEAREST OFFICE / TALK TO OUR STAFF</b>	

YOUR FEEDBACK IS CONFIDENTIAL AND FOR INTERNAL USE ONLY.



## Contact us

Bonface Kaberia  
Programme Director  
[bkaberia@mercy corps.org](mailto:bkaberia@mercy corps.org)

County Offices: Marsabit | Isiolo | Samburu

Nairobi Contacts and Location: 3<sup>rd</sup> Floor, Almont Park - Church Road |  
P.O Box 11868 - 00100, Nairobi | Phone: 020 4441143

