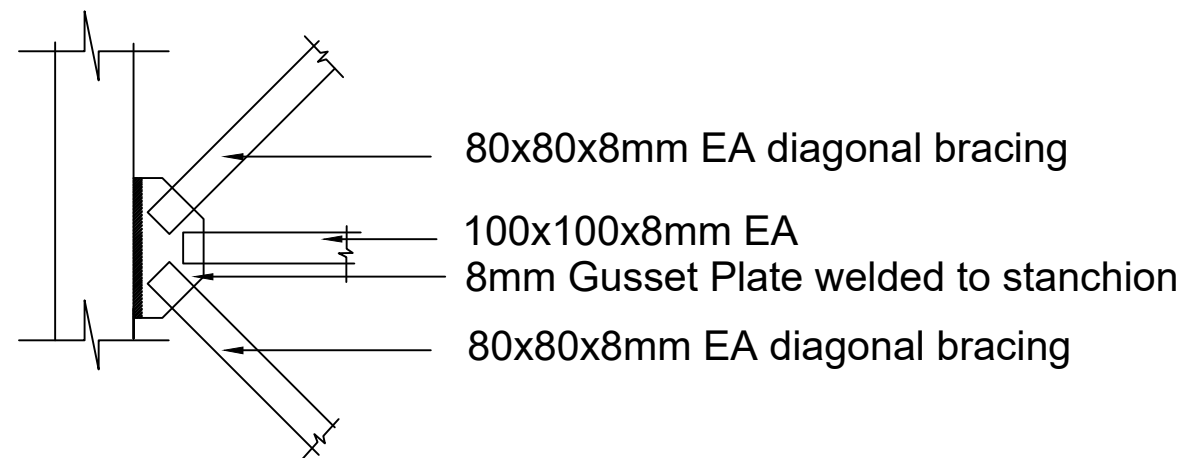
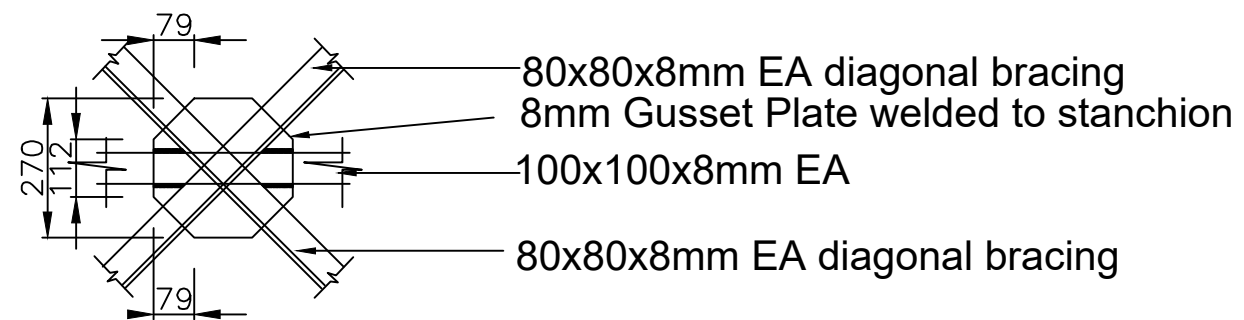


				CLIENT:	USAID/MERCY CORPS			PROJECT	SMALL TOWN		DRAWING TITLE		Designed:	Engr Soji	STAMP
				CONSULTANT	<b>KONSADEM ASSOCIATES LTD</b> <i>Engineers &amp; Consultants</i> 30, Onireke Layout, P.M. B. 5478, Ibadan, NIGERIA. E-mail: <a href="mailto:konsadem@gmail.com">konsadem@gmail.com</a>			<b>2ML CONSULTING NIGERIA LTD</b> Office 8, B1-Close Off 69(A) Road Gwarinpa Abuja,		GANYE	GANGARASSO MAIN WATER SCHEME		Drawn :	Damola	
											ELEVATED STORAGE TANK 50 Cu.m)		Traced :		
											TANK FOOTING PLAN		Checked :	Engr Soji	
Mark :	Date :	Made by :	Revision					STATE	ADAMAWA		DRAWING NO.	SCALE	Date :	MAY 2021	Ref. No:
											AD/BD/O I				USAID/BAY/AD-00

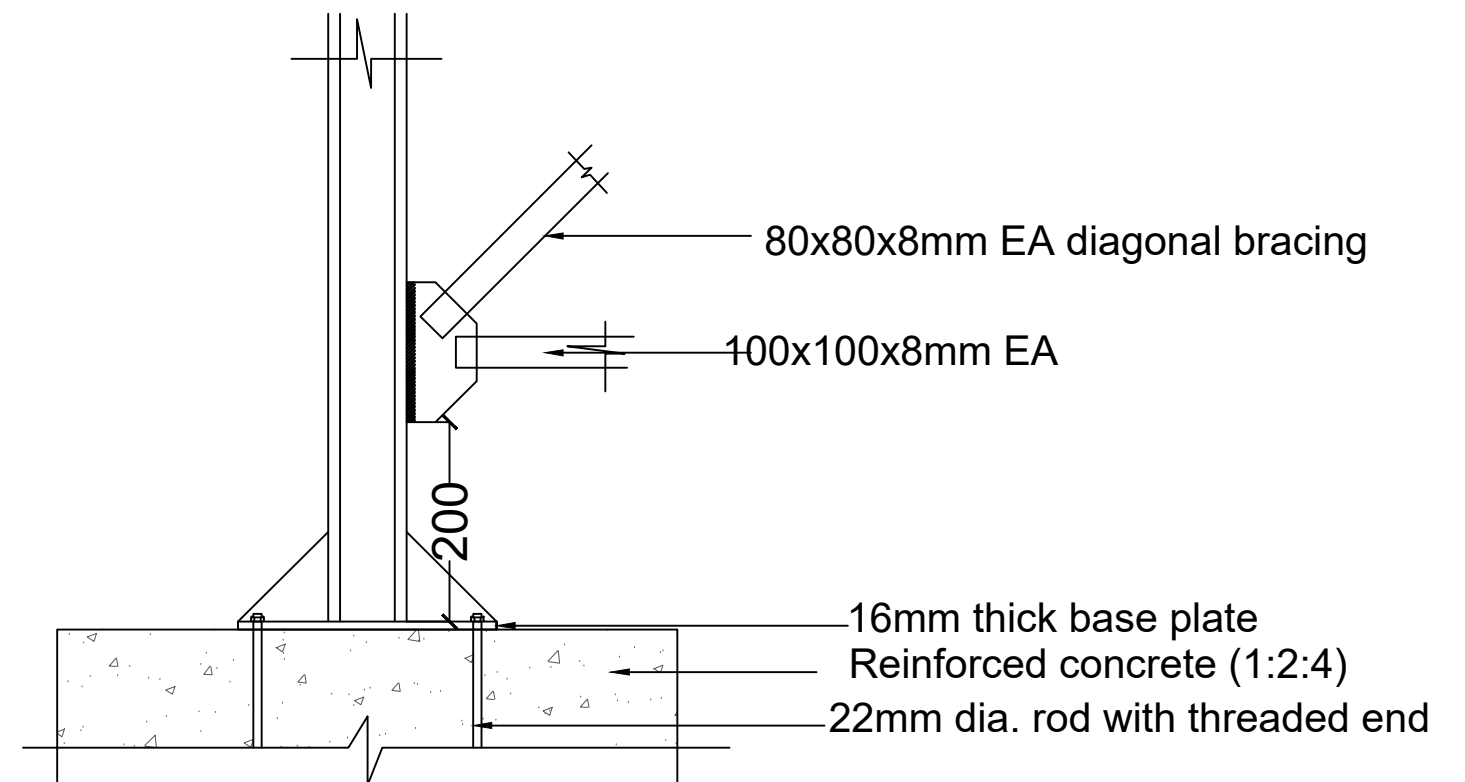




**DETAIL-B**

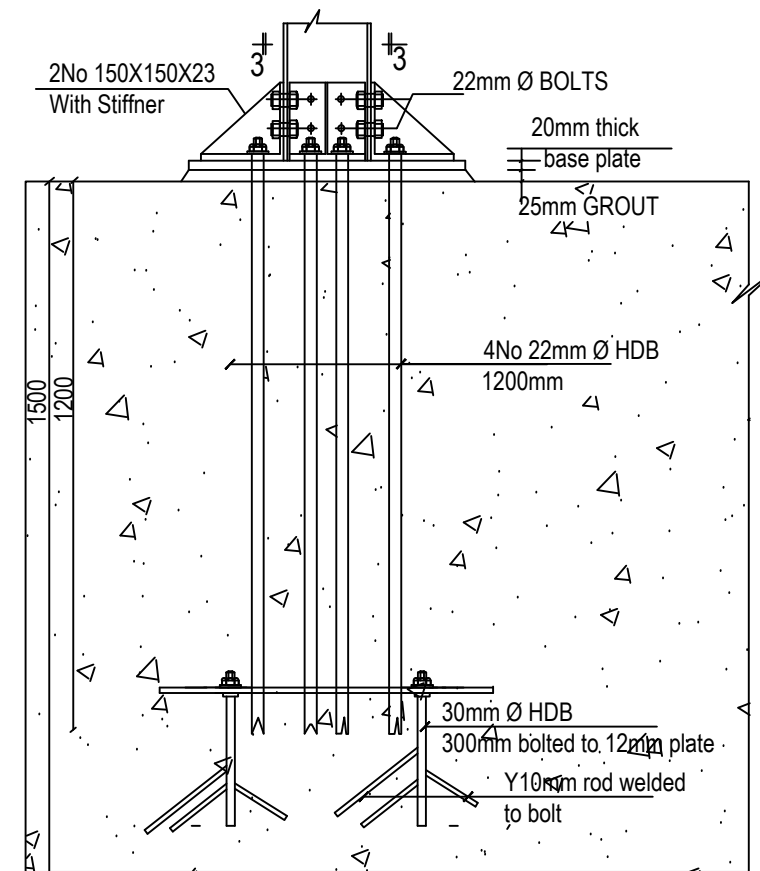
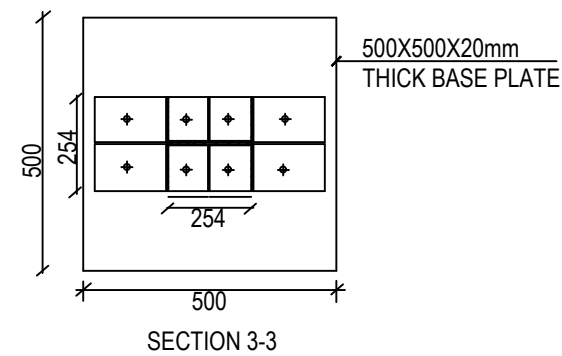
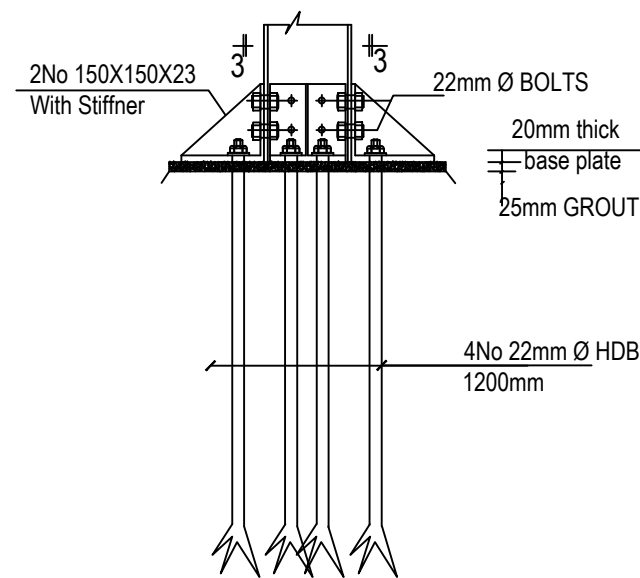
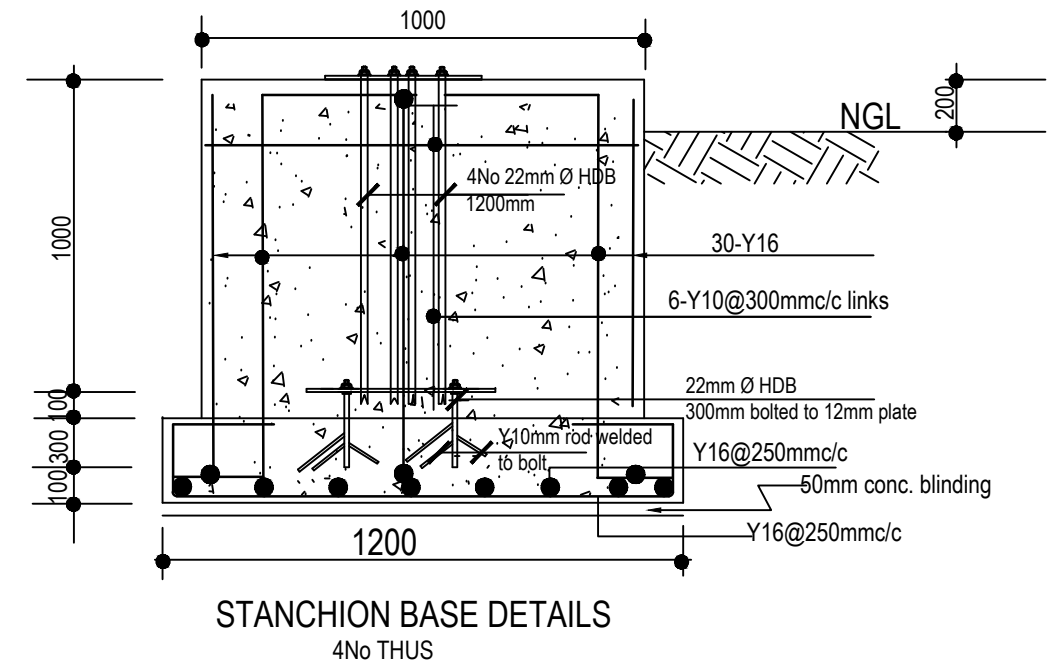
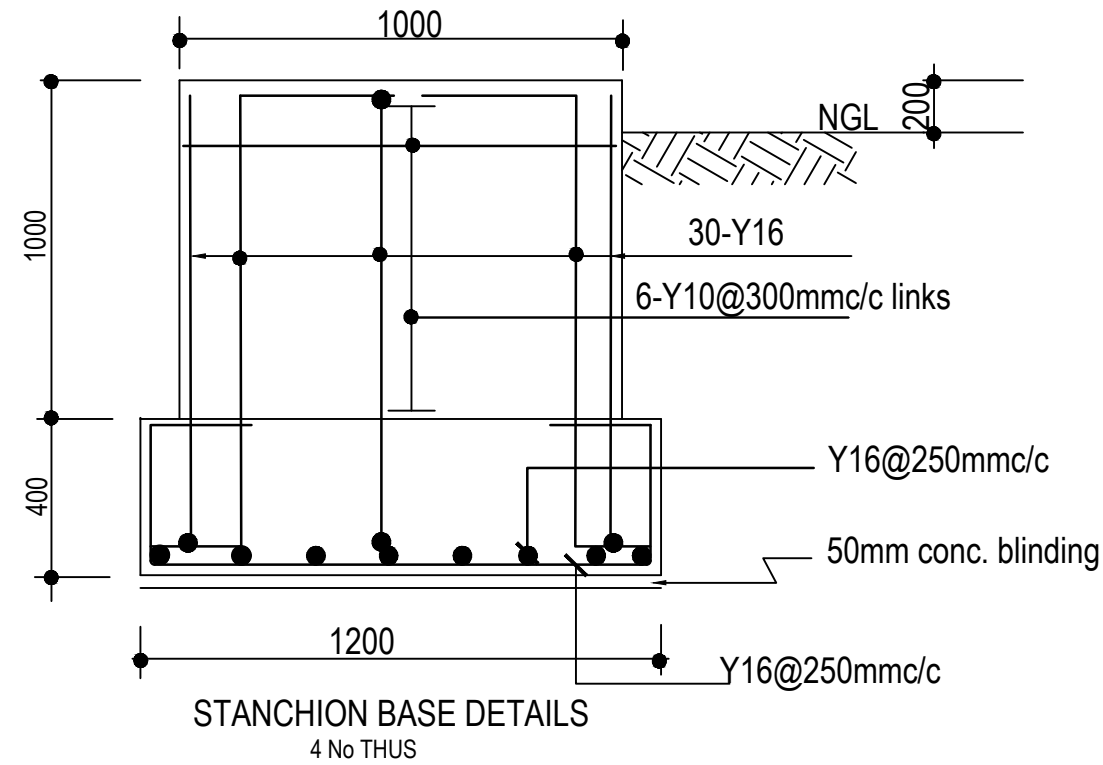


**DETAIL-C**

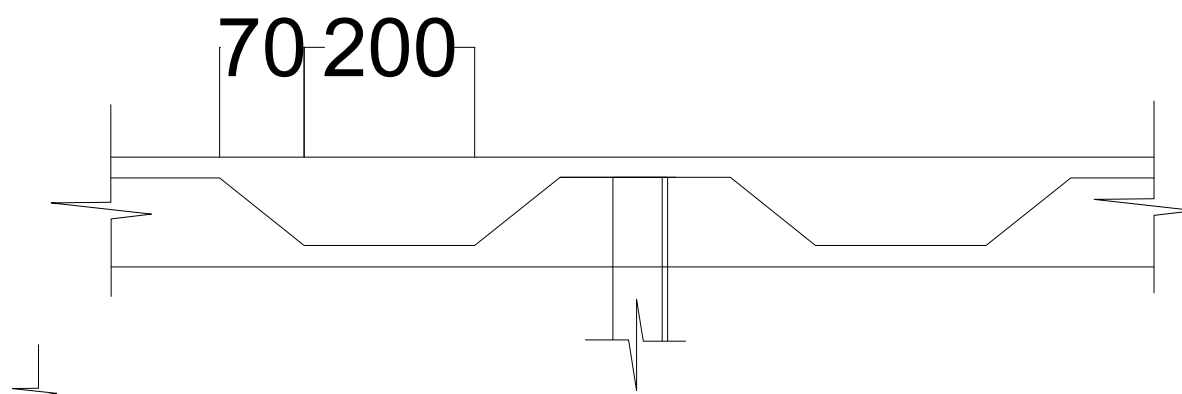
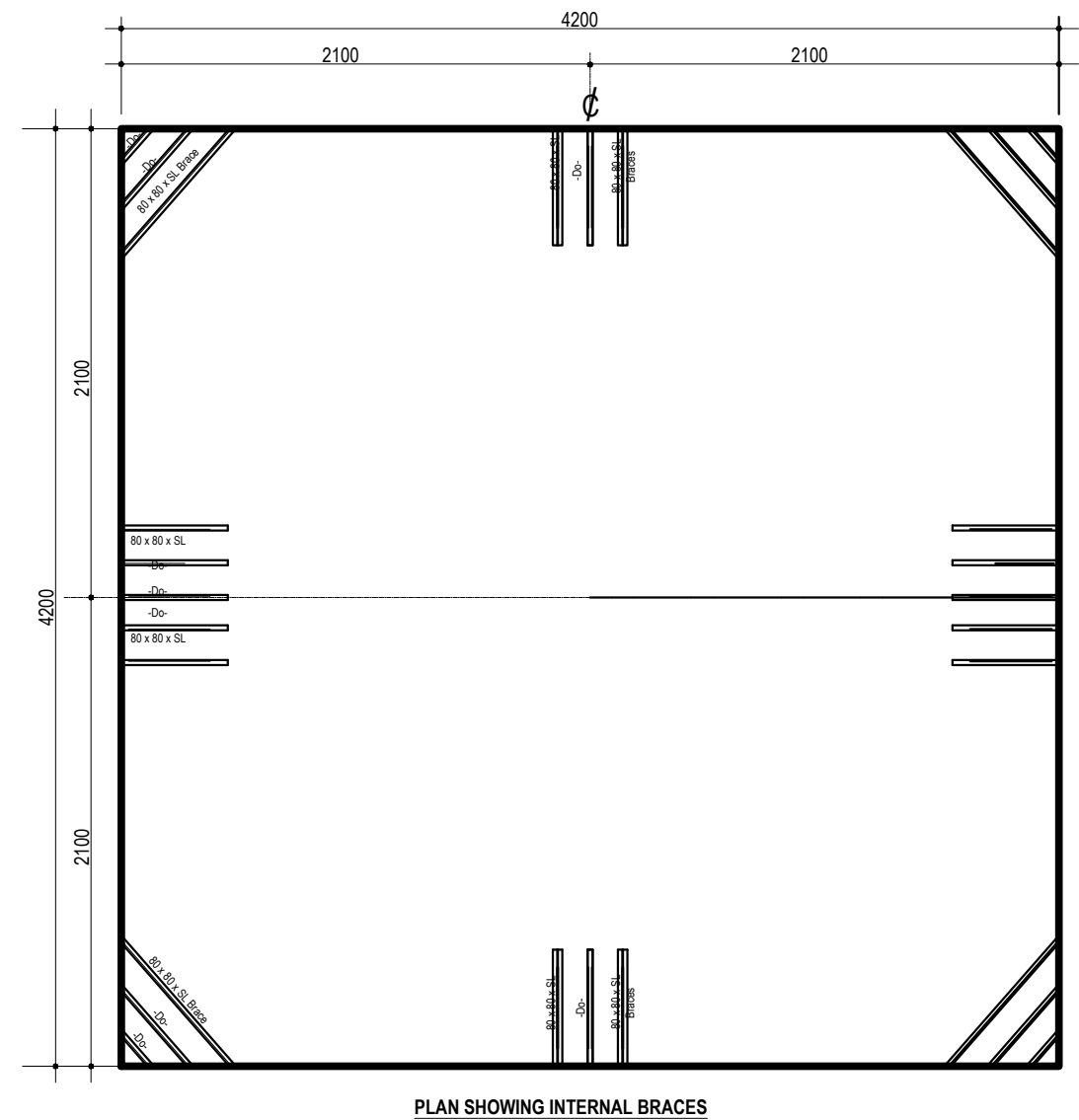
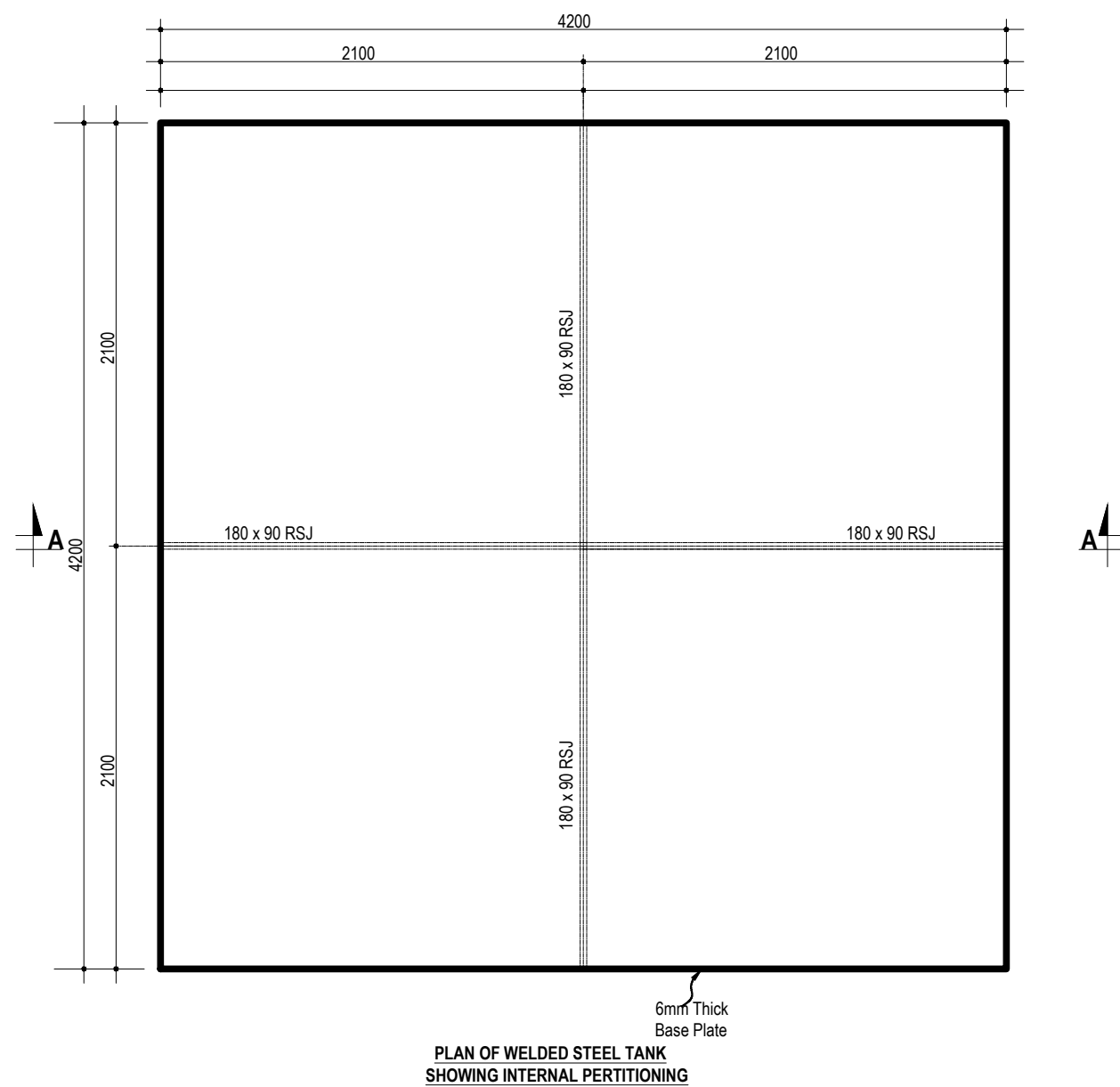


**DETAIL-A**

				CLIENT:	USAID/MERCY CORPS		PROJECT	ENGINEERING DESIGN OF WASH FACILITIES ACROSS BORNO, ADAMAWA AND YOBE (BAY) STATES		SMALL TOWN	DRAWING TITLE GANGARASSO MAIN WATER SCHEME		Designed: Engr Soji	STAMP
				CONSULTANT	 <b>KONSADEM ASSOCIATES LTD</b> <i>Engineers &amp; Consultants</i> 30, Onireke Layout, P.M. B. 5478, Ibadan, NIGERIA. E-mail: <a href="mailto:konsadem@gmail.com">konsadem@gmail.com</a>	<b>2ML CONSULTING NIGERIA LTD</b> Office 8, B1-Close Off 69(A) Road Gwarinpa Abuja,		STATE	ADAMAWA	GANYE	ELEVATED STORAGE TANK 50 Cu.m) TANK DETAILS		Drawn : Damola	
											Traced : Engr Soji			
											Checked : Engr Soji			
											Date : MAY 2021			
Mark : Date : Made by : Revision											DRAWING NO.	SCALE	Ref. No:	
											BB/BD/O3		USAID/BAY/BU-00	

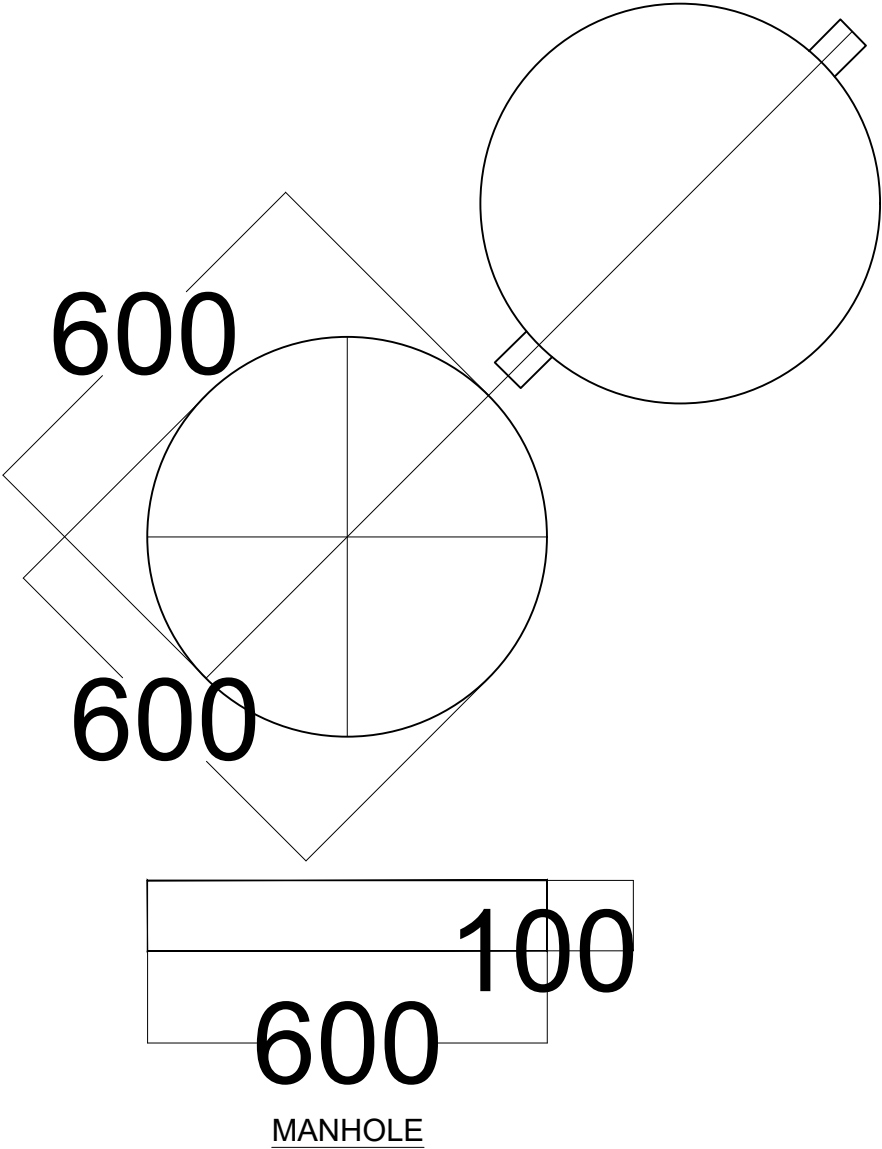
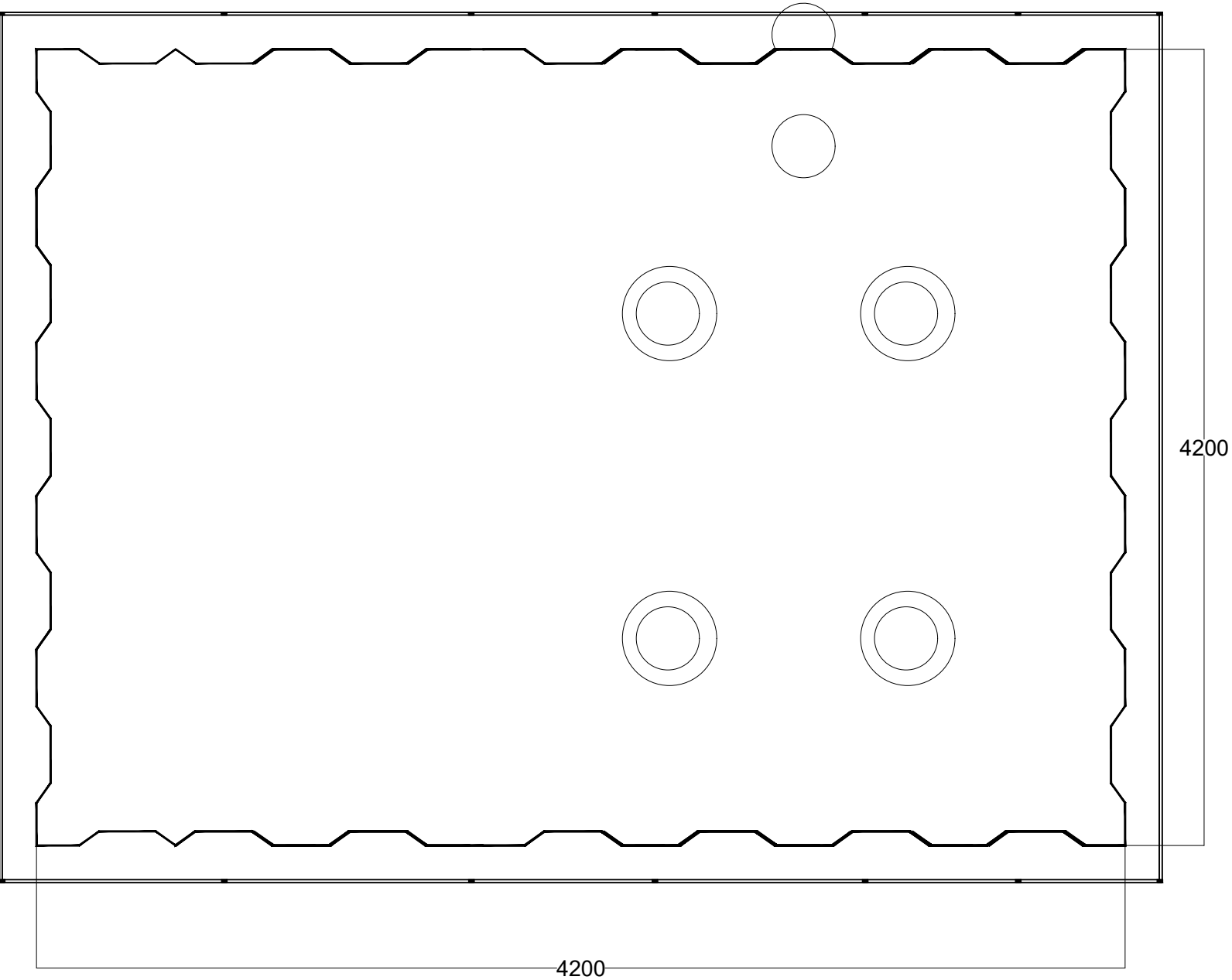


				<div>CLIENT:  USAID/MERCY CORPS</div> <div>CONSULTANT <div><div></div><div><div>KONSADEM ASSOCIATES LTD</div><div>Engineers &amp; Consultants 30, Onireke Layout, P.M. B. 5478, Ibadan, NIGERIA. E-mail:konsadem@gmail.com</div></div><div><div>2ML CONSULTING NIGERIA LTD</div><div>Office 8, B1-Close Off 69(A) Road Gwarinpa Abuja,</div></div><div></div></div></div>	<div>PROJECT ENGINEERING DESIGN OF WASH FACILITIES ACROSS BORNO, ADAMAWA AND YOBE (BAY) STATES Service Contract No:YOL SC 14</div> <div>STATE  ADAMAWA</div>	<div>SMALL TOWN  GANYE</div>	<div>DRAWING TITLE GANGARASSO MAIN WATER SCHEME  ELEVATED STORAGE TANK 50 Cu.m) FOOTING DETAILS</div> <div><div>DRAWING NO.  BB/BD/04</div><div>SCALE</div></div>	<div>Designed: Engr Soji Drawn : Damola Traced : Checked : Engr Soji Date : MAY 2021</div> <div>Ref. No:  USAID/BAY/BU-00</div> <div>STAMP</div>
Mark : Date : Made by : Revision								



				CLIENT:	USAID/MERCY CORPS		<div>PROJECT</div> <div>ENGINEERING DESIGN OF WASH FACILITIES ACROSS BORNO, ADAMAWA AND YOBE (BAY) STATES</div> <div>Service Contract No: YOL SC 14</div> <div>STATE</div> <div>ADAMAWA</div>	<div>SMALL TOWN</div> <div>GANYE</div>	DRAWING TITLE		Designed: Engr Soji		<div>STAMP</div>	
				CONSULTANT	<div></div> <div>KONSADEM ASSOCIATES LTD</div> <div>Engineers &amp; Consultants</div> <div>30, Onireke Layout, P.M. B. 5478, Ibadan, NIGERIA. E-mail:konsadem@gmail.com</div>	<div></div> <div>2ML CONSULTING NIGERIA LTD</div> <div>Office 8, B1-Close Off 69(A) Road Gwarinpa Abuja,</div>			GANGARASSO MAIN WATER SCHEME		Drawn : Damola			
									ELEVATED STORAGE TANK 50 Cu.m)		Traced :			
									WATER TANK DETAILS		Checked : Engr Soji			
Mark : Date : Made by : Revision									Date : MAY 2021		Ref. No:			
									DRAWING NO.		SCALE		USAID/BAY/BU-00	
									BB/BD/05					

All bolts connected to gusset plates to be 16mm dia,grade 8.8  
DETAILS AT 'B' DETAILS AT 'B'

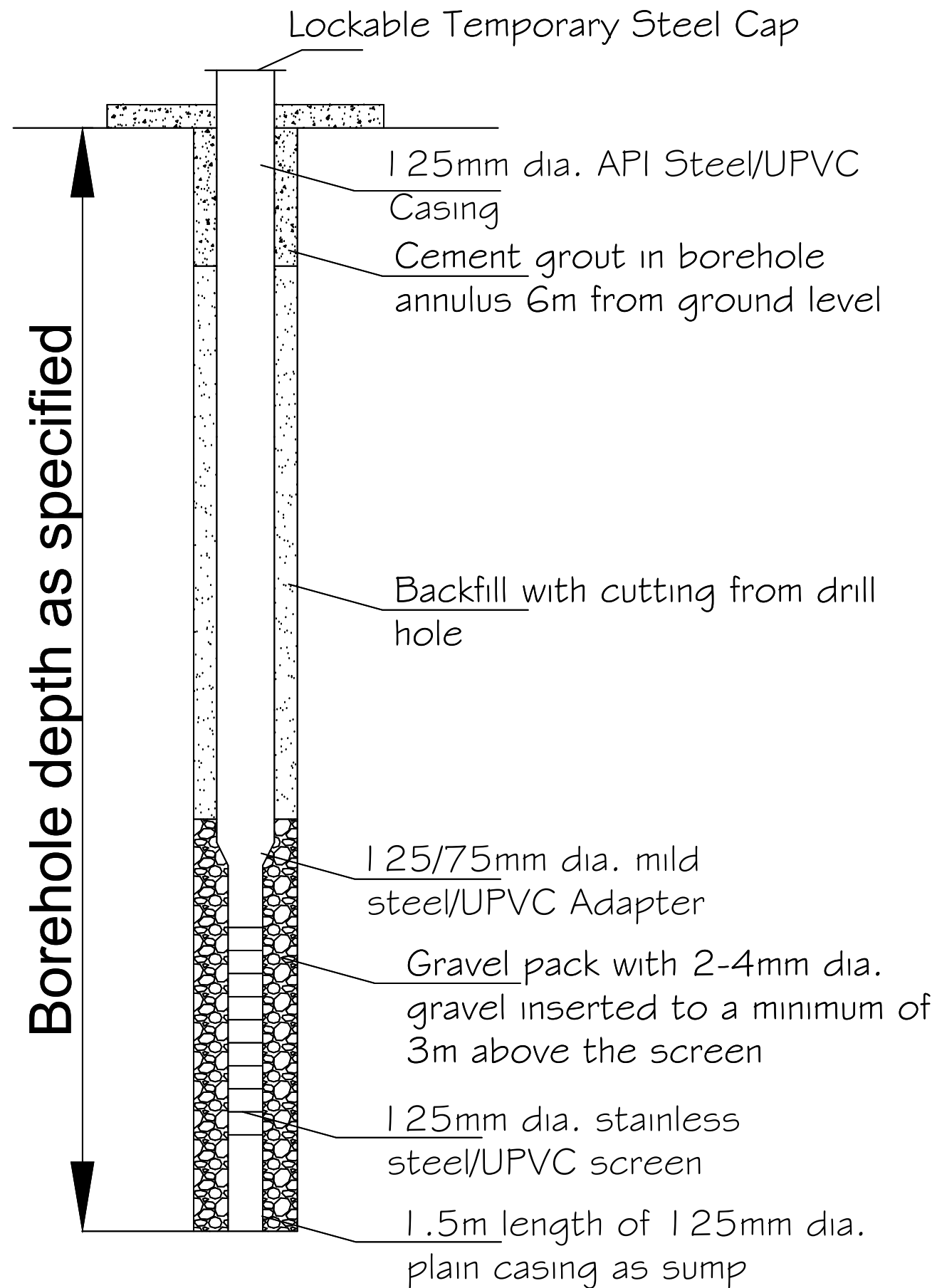


NOTES

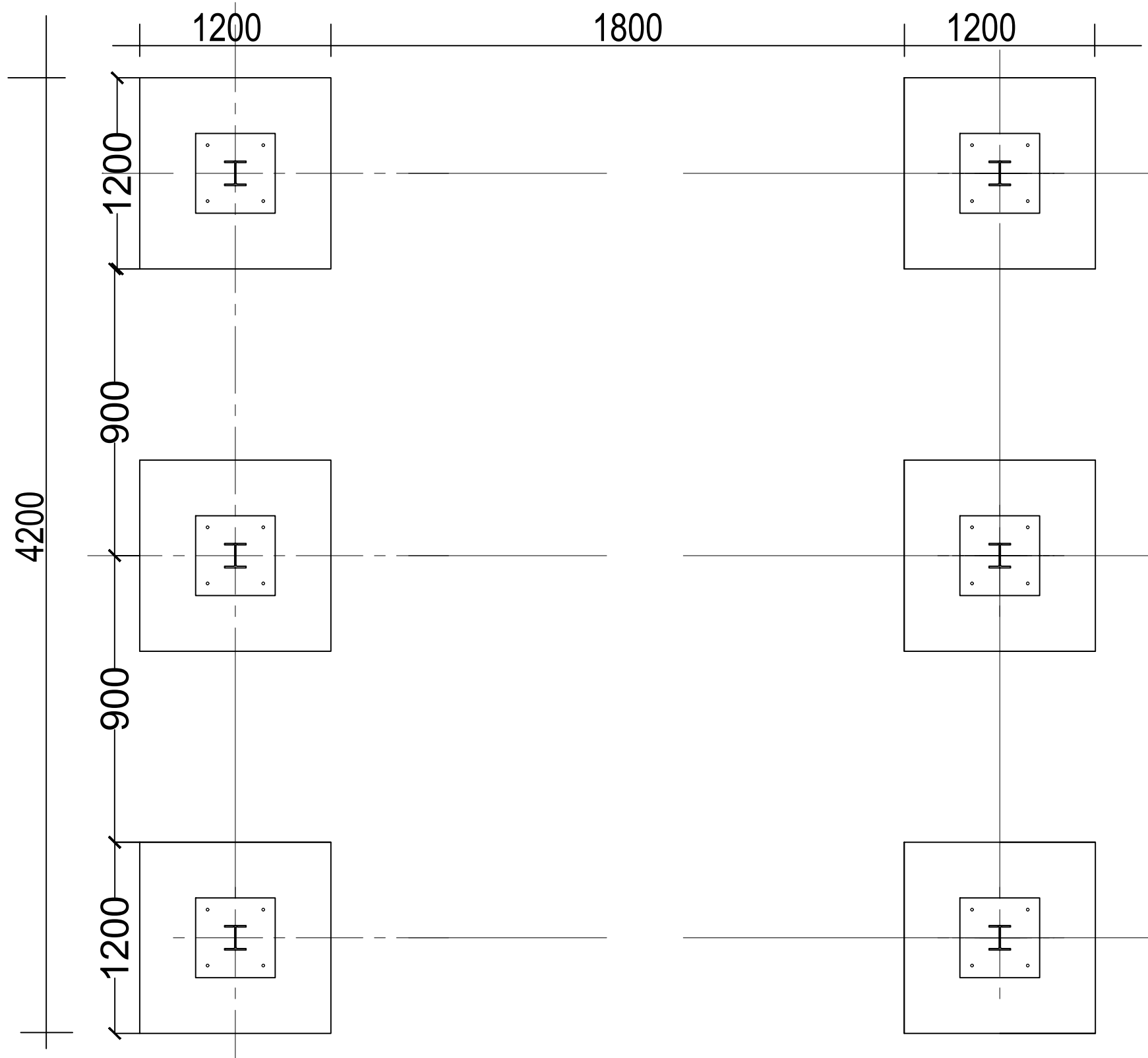
- 1. CONCRETE GRADE = 25
- 2. STEEL GRADE = 43
- 3. SOIL BEARING CAPACITY(ASSUMED) = 150KN/m<sup>2</sup>
- 4. WIND LOADING CONDITIONS = 40m/s<sup>2</sup>
- 5. ELECTRODE: A fox 3.10/4.00mm  
5mm thick fillet weld on body panels  
10mm thick butt welding on base.

- PAINTING
- a. Internal section of tank with 1 coat of epoxy primer followed by 2 coats asphaltine paint.
  - b. External surface of tank including the access ladder and ventilation beams with with red oxide base followed by 2 coats of HR aluminum paint (5200)

				CLIENT:	USAID/MERCY CORPS		PROJECT	SMALL TOWN	DRAWING TITLE		Designed: Engr Soji	STAMP	
				CONSULTANT	 <b>KONSADEM ASSOCIATES LTD</b> <i>Engineers &amp; Consultants</i> 30, Onireke Layout, P.M. B. 5478, Ibadan, NIGERIA. E-mail:konsadem@gmail.com	<b>2ML CONSULTING NIGERIA LTD</b> Office 8, B1-Close Off 69(A) Road Gwarinpa Abuja, 	ENGINEERING DESIGN OF WASH FACILITIES ACROSS BORNO, ADAMAWA AND YOBE (BAY) STATES Service Contract No:YOL SC 14		GANYE	GANGARASSO MAIN WATER SCHEME			Drawn : Damola
										ELEVATED STORAGE TANK 50 Cu.m)			Traced :
Mark : Date :    Made by :                      Revision							STATE		WATER TANK DETAILS		Checked : Engr Soji		
							ADAMAWA		DRAWING NO.	SCALE	Date : MAY 2021		
									BB/BD/OG		Ref. No:		
											USAID/BAY/BU-OO		



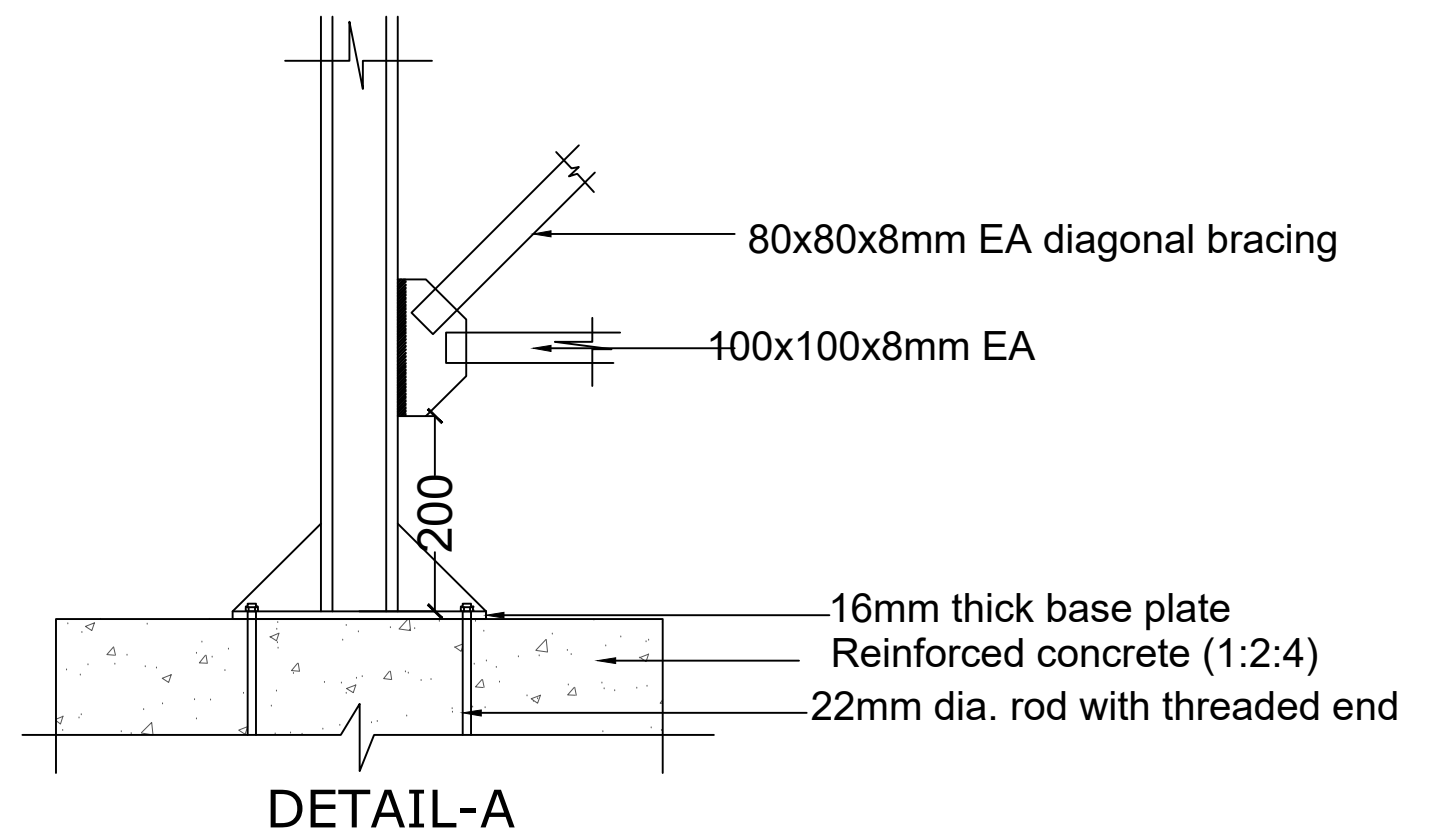
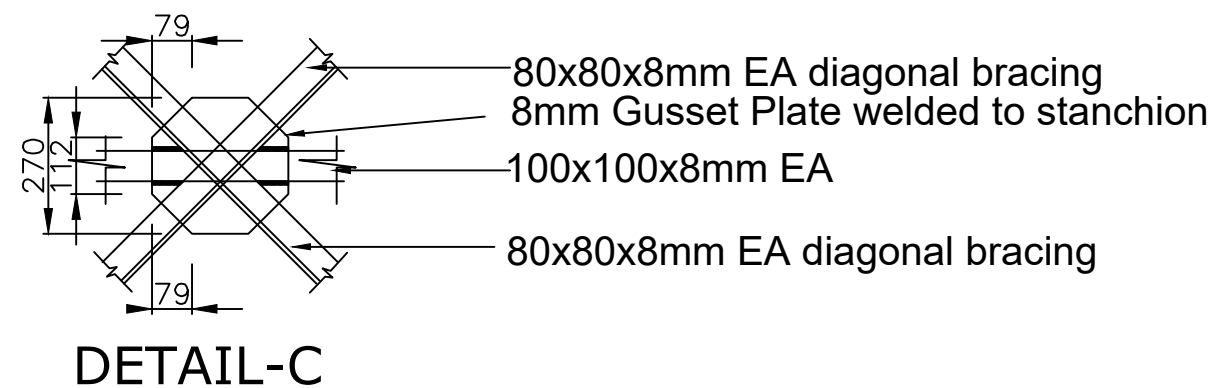
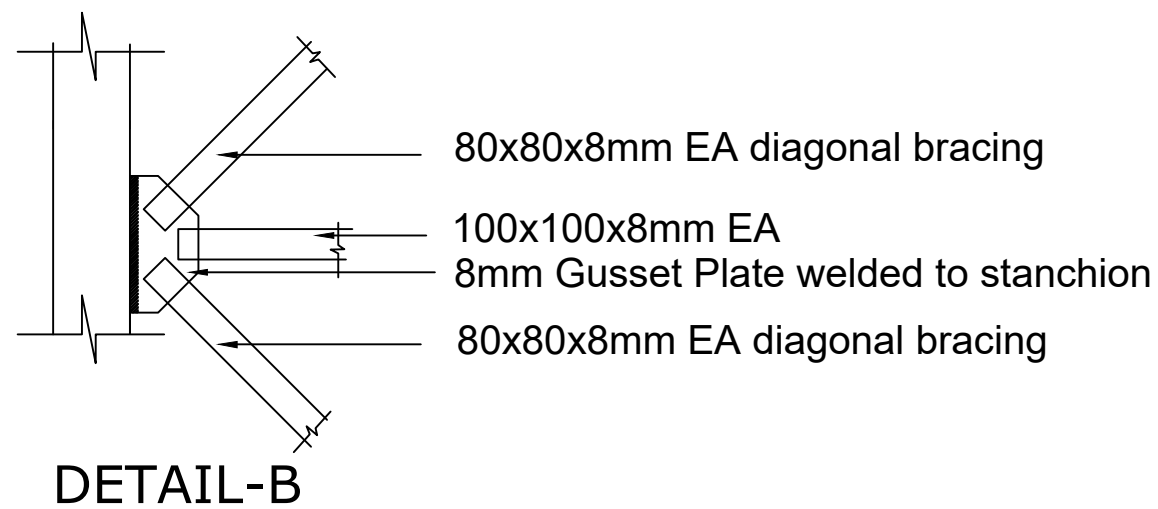
				CLIENT:	USAID/MERCY CORPS	PROJECT	SMALL TOWN	DRAWING TITLE	Designed: Engr Soji	STAMP
				CONSULTANT	<b>KONSADEM ASSOCIATES LTD</b> Engineers & Consultants 30, Onireke Layout, P.M. B. 5478, Ibadan, NIGERIA. E-mail: <a href="mailto:konsadem@gmail.com">konsadem@gmail.com</a>	ENGINEERING DESIGN OF WASH FACILITIES ACROSS BORNO, ADAMAWA AND YOBE (BAY) STATES Service Contract No: YOL SC 14	GANYE	GANGARASSO MAIN WATER SCHEME	Drawn : Damola	
					<b>2ML CONSULTING NIGERIA LTD</b> Office 8, B1-Close Off 69(A) Road Gwarinpa Abuja,	STATE		BOREHOLE DETAILS	Traced : Checked : Engr Soji Date : MAY 2021	
Mark :	Date :	Made by :	Revision			ADAMAWA		DRAWING NO. BB/BD/07	SCALE	Ref. No: USAID/BAY/BU-00



				CLIENT:	USAID/MERCY CORPS	PROJECT	SMALL TOWN	DRAWING TITLE	Designed:	Engr Soji	STAMP
				CONSULTANT	<b>KONSADEM ASSOCIATES LTD</b> Engineers & Consultants 30, Onireke Layout, P.M. B. 5478, Ibadan, NIGERIA. E-mail: <a href="mailto:konsadem@gmail.com">konsadem@gmail.com</a>	ENGINEERING DESIGN OF WASH FACILITIES ACROSS BORNO, ADAMAWA AND YOBE (BAY) STATES Service Contract No: YOL SC 14	GANYE	GOVT. SECONDARY AND PRIMARY SCHOOL, SANGASSUMI. ELEVATED STORAGE TANK (25 Cu.m) TANK FOOTING PLAN	Drawn :	Damola	
					<b>2ML CONSULTING NIGERIA LTD</b> Office 8, B1-Close Off 69(A) Road Gwarinpa Abuja,	STATE		DRAWING NO.	Checked :	Engr Soji	
Mark :	Date :	Made by :	Revision			ADAMAWA		AD/BD/O I	Date :	MAY 2021	
								SCALE	Ref. No:	USAID/BAY/AD-00	







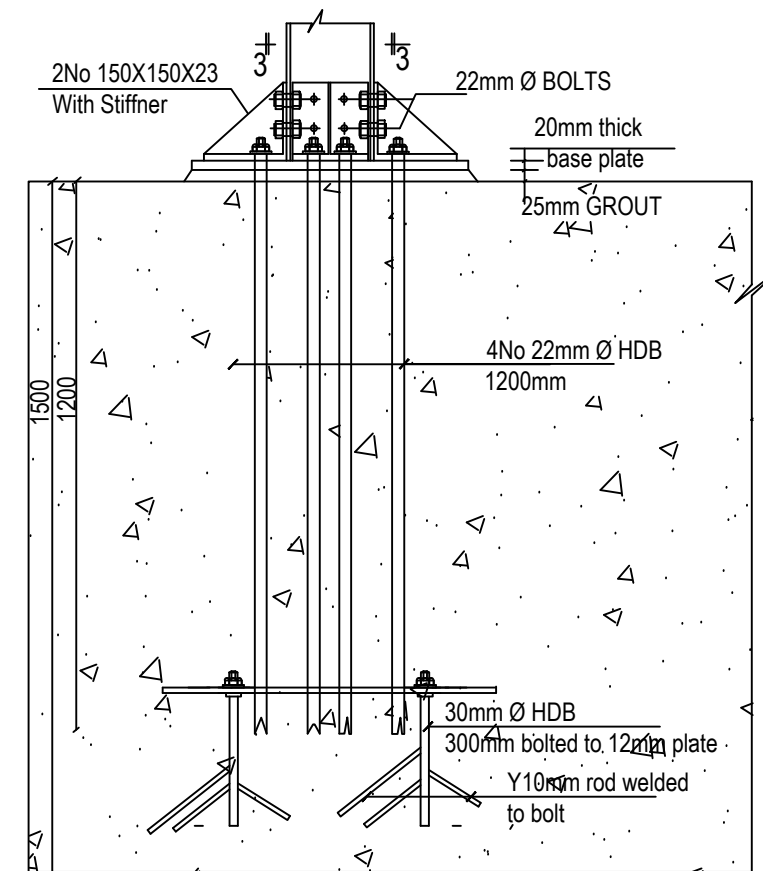
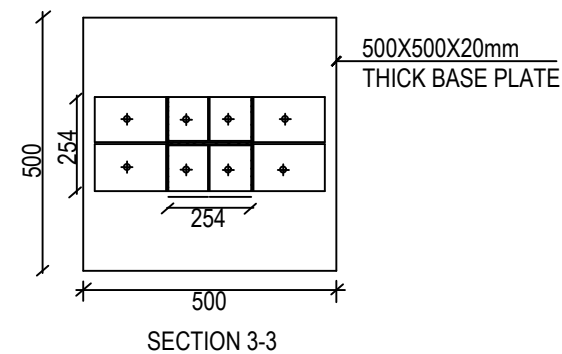
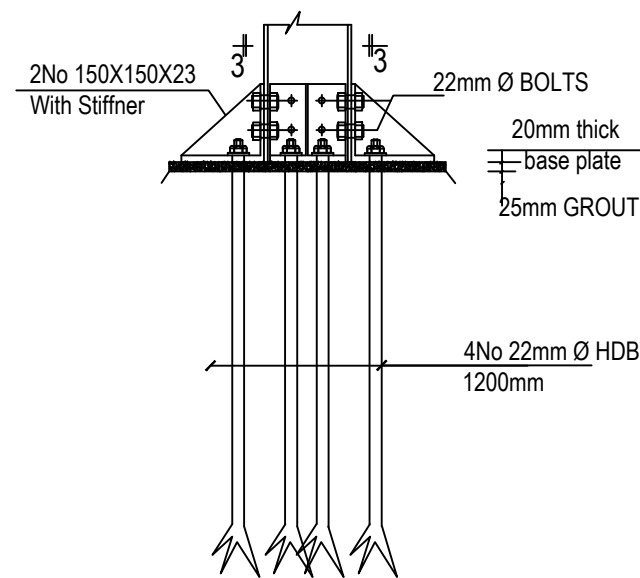
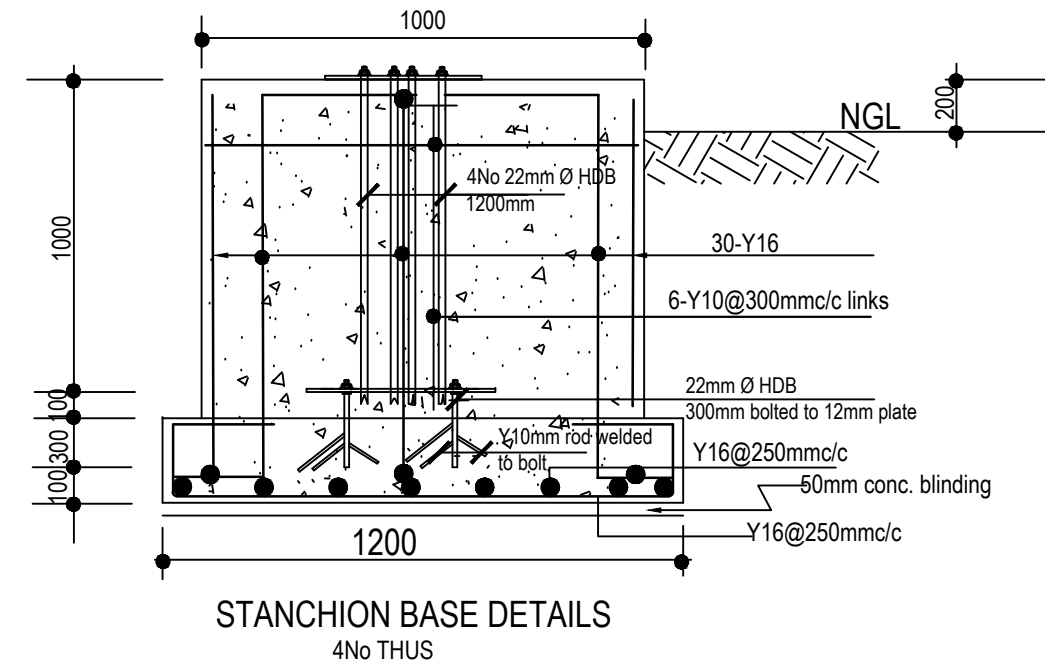
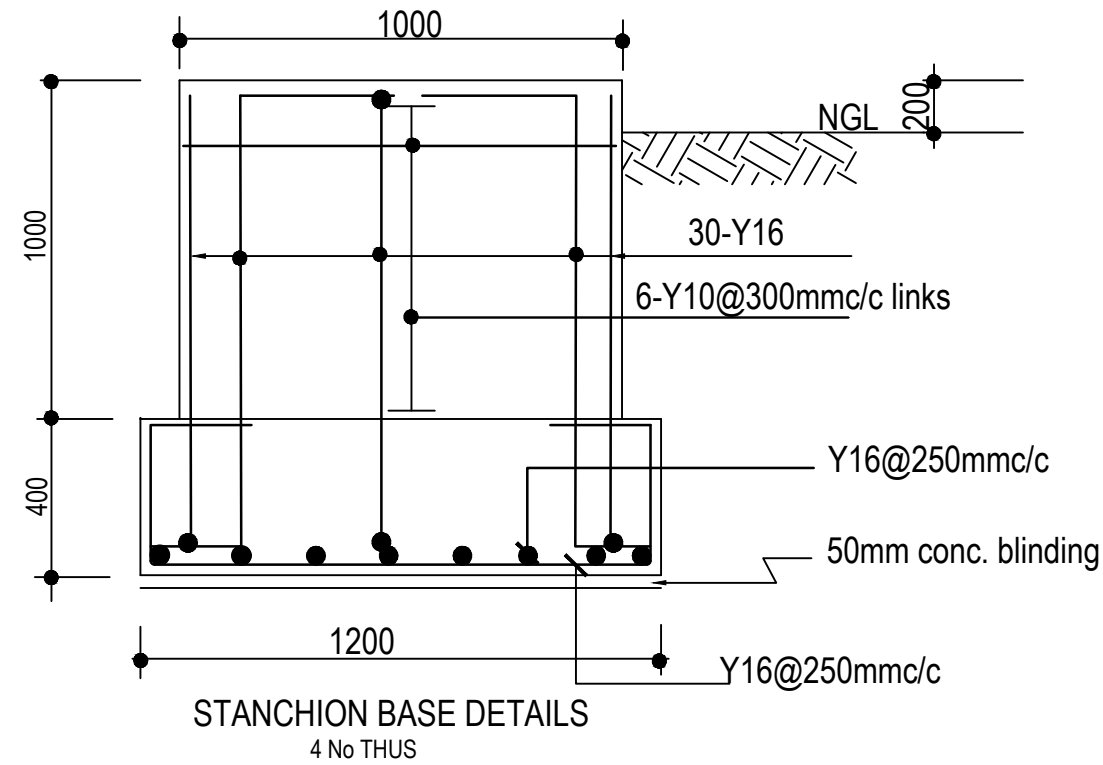
				<u>CLIENT:</u>	USAID/MERCY CORPS		<u>PROJECT</u>	SMALL TOWN	<u>DRAWING TITLE</u>		Designed: Engr Soji	STAMP
				<u>CONSULTANT</u>	 <b>KONSADEM ASSOCIATES LTD</b> <i>Engineers &amp; Consultants</i> 30, Onireke Layout, P.M. B. 5478, Ibadan, NIGERIA. E-mail: konsadem@gmail.com	<b>2ML CONSULTING NIGERIA LTD</b> Office 8, B1-Close Off 69(A) Road Gwarinpa Abuja,		GANYE	GOVT. SECONDARY AND PRIMARY SCHOOL, SANGASSUMI. ELEVATED STORAGE TANK 25 Cu.m) TANK DETAILS	Drawn : Damola		
										Traced :		
										Checked : Engr Soji		
Mark : Date : Made by : Revision							<u>STATE</u>		<u>DRAWING NO.</u>	<u>SCALE</u>	<u>Ref. No:</u>	
							ADAMAWA		BB/BD/O3		USAID/BAY/BU-00	



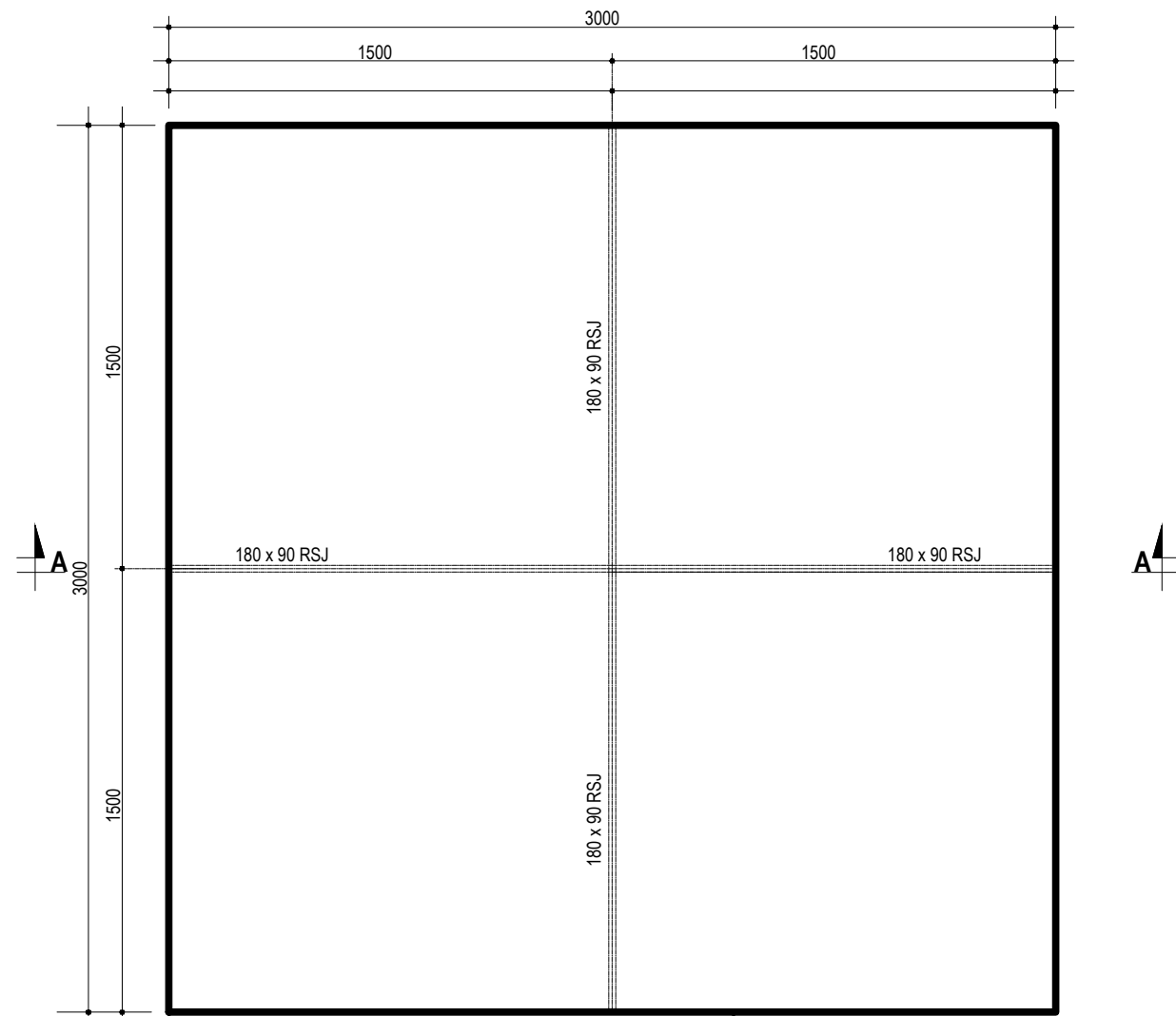
Engineers & Consultants  
30, Onireke Layout,  
P.M. B. 5478, Ibadan, NIGERIA.  
E-mail: [konsadem@gmail.com](mailto:konsadem@gmail.com)

**2ML CONSULTING NIGERIA LTD**  
Office 8, B1-Close Off 69(A) Road  
Gwarinpa Abuja,



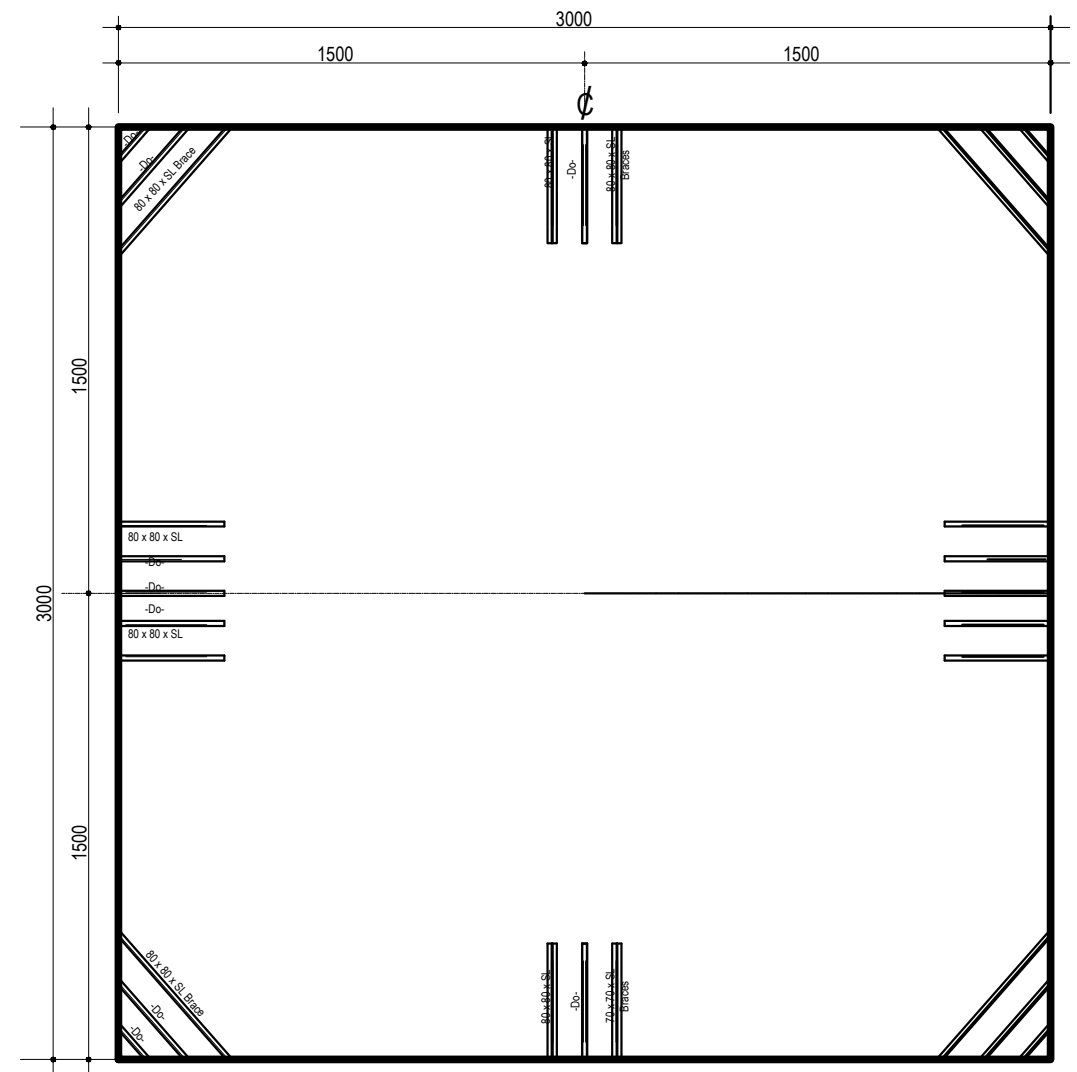


				<div>CLIENT:</div> <div>USAID/MERCY CORPS</div>	<div>PROJECT</div> <div>ENGINEERING DESIGN OF WASH FACILITIES ACROSS BORNO, ADAMAWA AND YOBE (BAY) STATES</div> <div>Service Contract No: YOL SC 14</div>	<div>SMALL TOWN</div> <div>GANYE</div>	<div>DRAWING TITLE</div> <div>GOVT. SECONDARY AND PRIMARY SCHOOL, SANGASSUMI. ELEVATED STORAGE TANK 25 Cu.m)</div> <div>FOOTING DETAILS</div>	<div>Designed: Engr Soji</div> <div>Drawn : Damola</div> <div>Traced : </div> <div>Checked : Engr Soji</div> <div>Date : MAY 2021</div>	<div>STAMP</div>		
										<div>CONSULTANT</div> <div><div><div>K</div></div><div><div>KONSADEM ASSOCIATES LTD</div><div>Engineers &amp; Consultants</div><div>30, Onireke Layout, P.M. B. 5478, Ibadan, NIGERIA. E-mail:konsadem@gmail.com</div></div><div><div>2ML CONSULTING NIGERIA LTD</div><div>Office 8, B1-Close Off 69(A) Road Gwarinpa Abuja,</div></div></div> <div><div>2ML</div></div>	<div>STATE</div> <div>ADAMAWA</div>
Mark : Date : Made by : Revision											

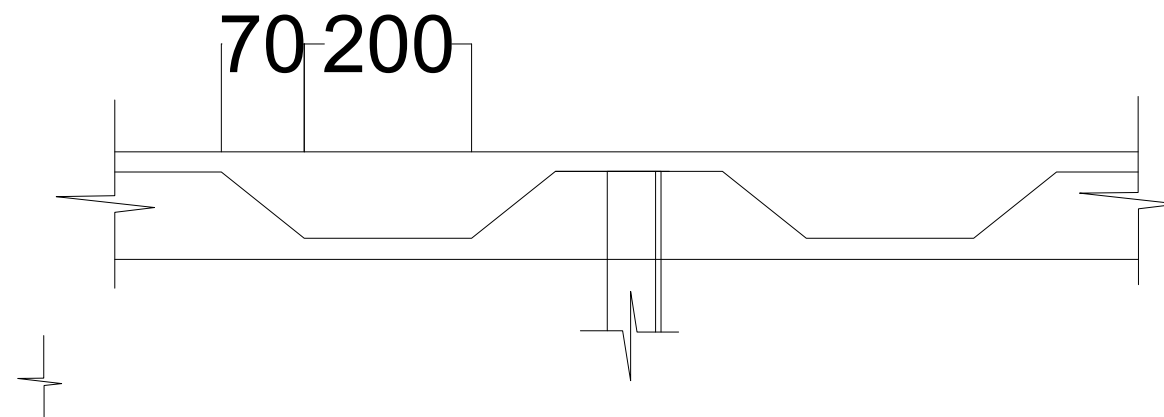


6mm Thick  
Base Plate

**PLAN OF WELDED STEEL TANK  
SHOWING INTERNAL PERTITIONING**



**PLAN SHOWING INTERNAL BRACES**

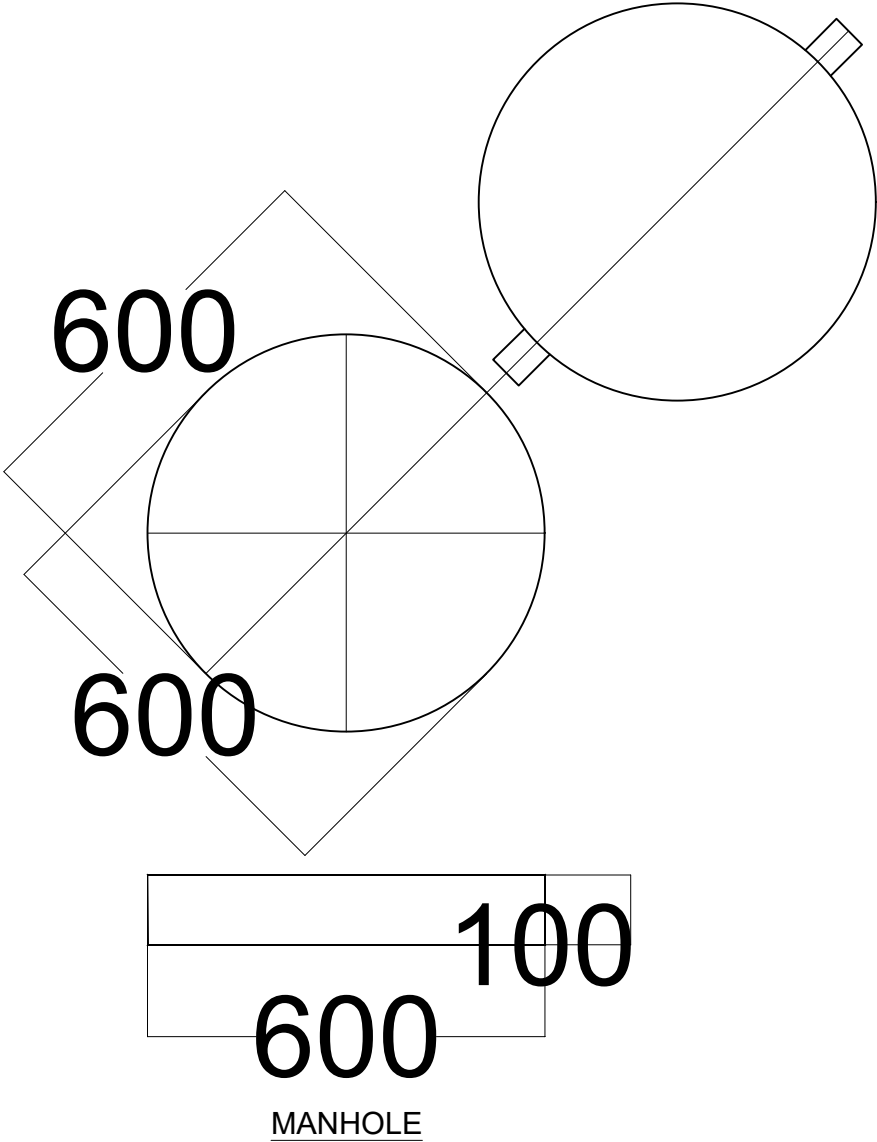
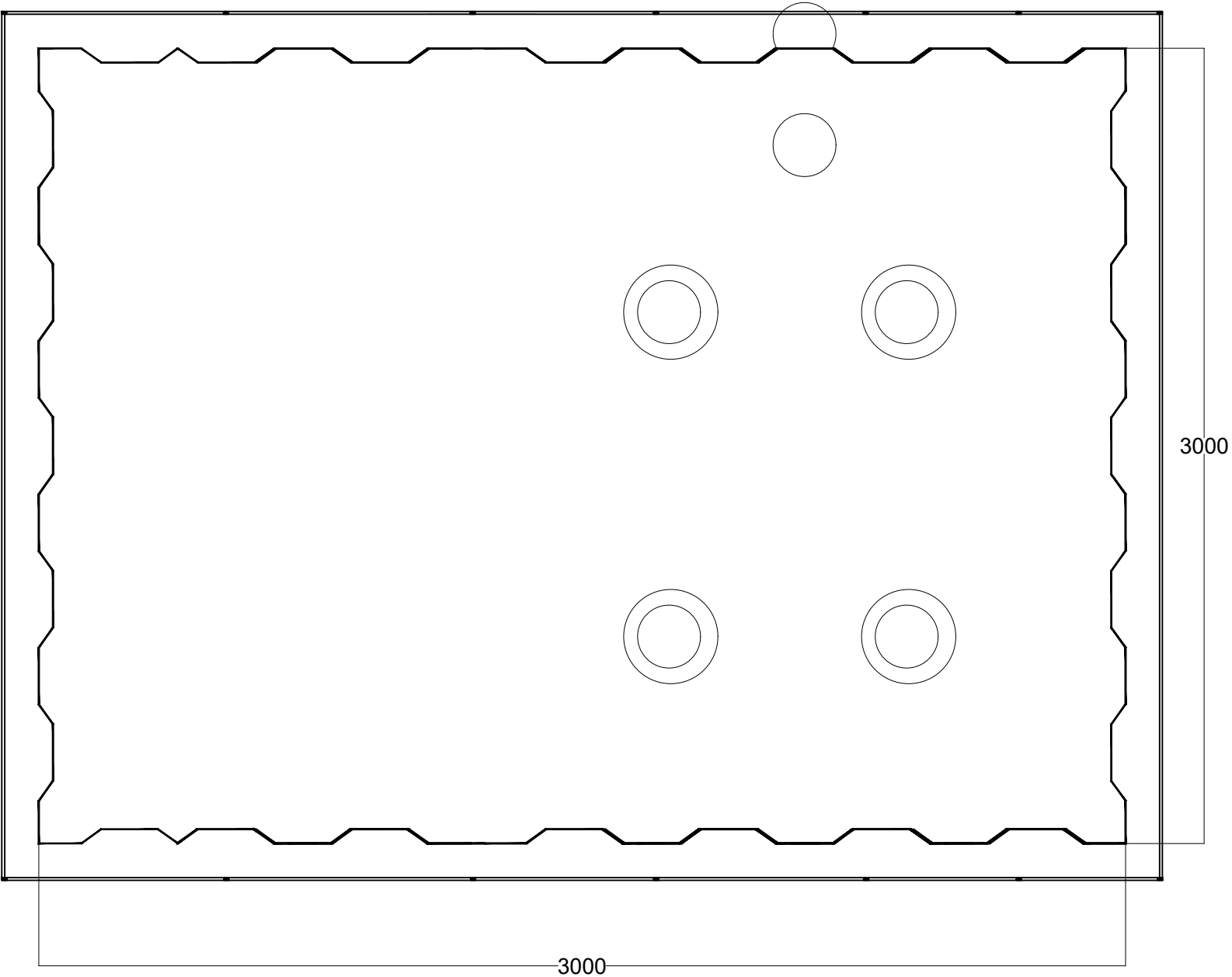


				CLIENT:	USAID/MERCY CORPS	PROJECT	SMALL TOWN	DRAWING TITLE	Designed: Engr Soji	STAMP
				CONSULTANT	<b>KONSADEM ASSOCIATES LTD</b> Engineers & Consultants 30, Onireke Layout, P.M. B. 5478, Ibadan, NIGERIA. E-mail: <a href="mailto:konsadem@gmail.com">konsadem@gmail.com</a>	<b>ENGINEERING DESIGN OF WASH FACILITIES ACROSS BORNO, ADAMAWA AND YOBE (BAY) STATES</b> Service Contract No: YOL SC 14	GANYE	GOVT. SECONDARY AND PRIMARY SCHOOL, SANGASSUMI. ELEVATED STORAGE TANK 25 Cu.m)	Drawn : Damola	
					<b>2ML CONSULTING NIGERIA LTD</b> Office 8, B1-Close Off 69(A) Road Gwarinpa Abuja,	STATE		WATER TANK DETAILS	Traced : Engr Soji	
Mark :	Date :	Made by :	Revision			ADAMAWA		DRAWING NO.	Date : MAY 2021	
								BB/BD/05	Ref. No:	
								SCALE	USAID/BAY/BU-00	

All bolts connected to gusset plates to be 16mm dia,grade 8.8

DETAILS AT 'B'

DETAILS AT 'B'

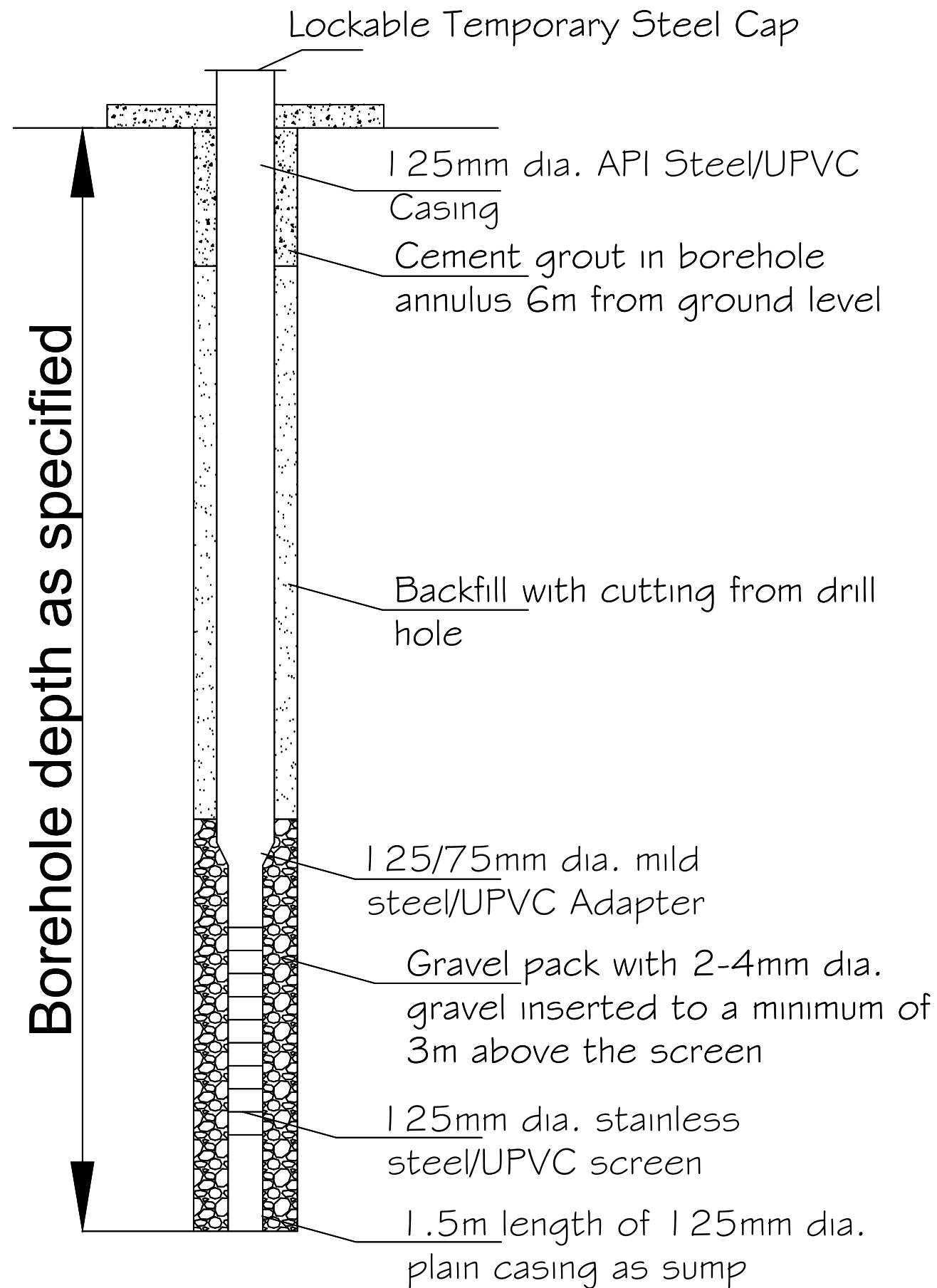


NOTES

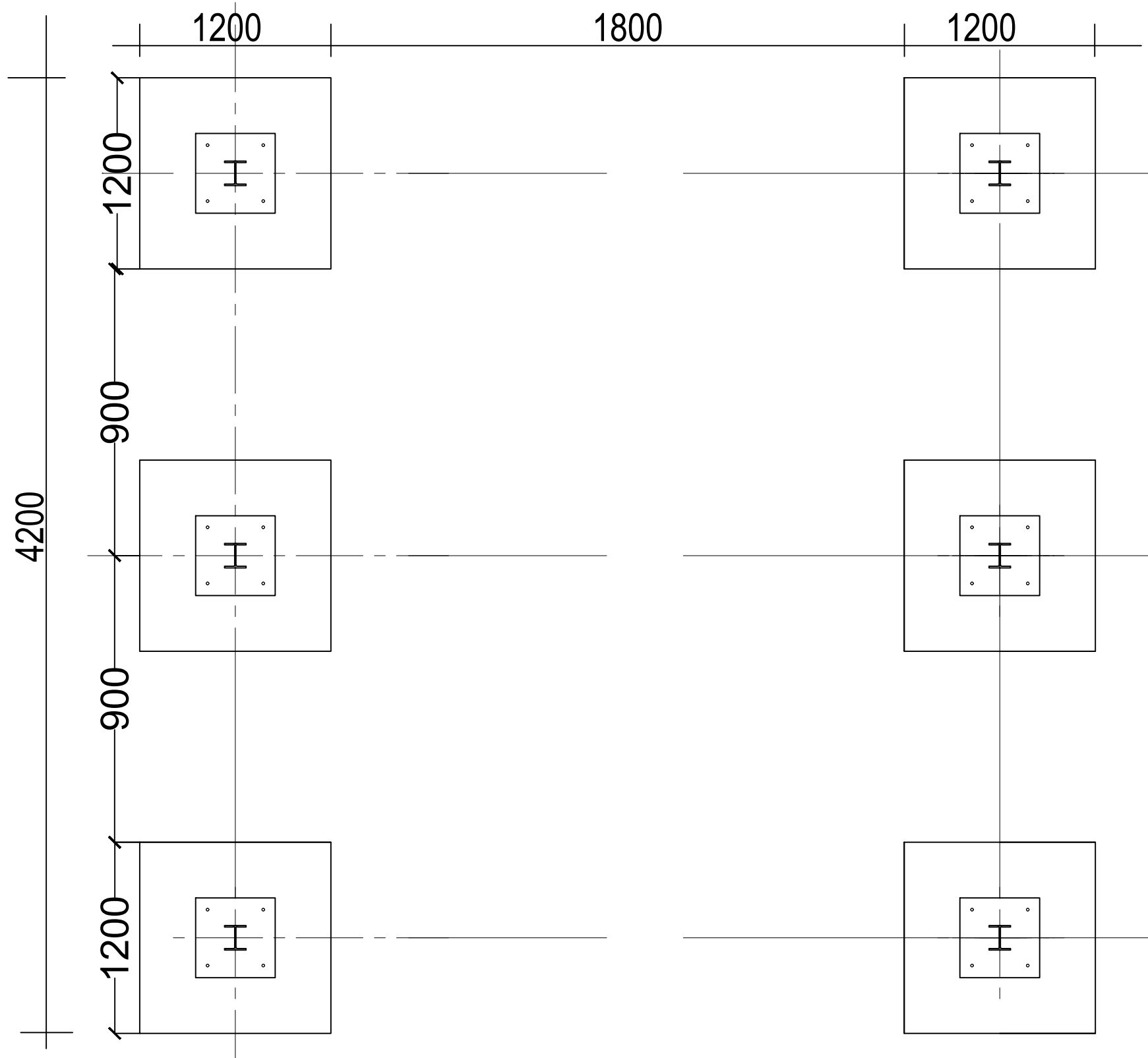
1. CONCRETE GRADE = 25
2. STEEL GRADE = 43
3. SOIL BEARING CAPACITY(ASSUMED) = 150KN/m<sup>2</sup>
4. WIND LOADING CONDITIONS = 40m/s<sup>2</sup>
5. ELECTRODE: A fox 3.10/4.00mm  
5mm thick fillet weld on body panels  
10mm thick butt welding on base.

- PAINTING
- a. Internal section of tank with 1 coat of epoxy primer followed by 2 coats asphaltine paint.
  - b. External surface of tank including the access ladder and ventilation beams with with red oxide base followed by 2 coats of HR aluminum paint (5200)

				CLIENT:	USAID/MERCY CORPS	PROJECT	ENGINEERING DESIGN OF WASH FACILITIES ACROSS BORNO, ADAMAWA AND YOBE (BAY) STATES	SMALL TOWN	GANYE	DRAWING TITLE	GOVT. SECONDARY AND PRIMARY SCHOOL, SANGASSUMI.	Designed:	Engr Soji	STAMP
				CONSULTANT	KONSADEM ASSOCIATES LTD		2ML CONSULTING NIGERIA LTD				ELEVATED STORAGE TANK 25 Cu.m)	Drawn :	Damola	
					Engineers & Consultants		Office 8, B1-Close Off 69(A) Road				WATER TANK DETAILS	Traced :	Engr Soji	
					30, Onireke Layout,		Gwarinpa Abuja,				DRAWING NO.	Date :	MAY 2021	
					P.M. B. 5478, Ibadan, NIGERIA.						SCALE	Ref. No:	USAID/BAY/BU-00	
					E-mail:konsadem@gmail.com						BB/BD/OG			
Mark :	Date :	Made by :	Revision			STATE	ADAMAWA							



				CLIENT:	USAID/MERCY CORPS	PROJECT	SMALL TOWN	DRAWING TITLE	Designed:	Engr Soji	STAMP
				CONSULTANT	<b>KONSADEM ASSOCIATES LTD</b> Engineers & Consultants 30, Onireke Layout, P.M. B. 5478, Ibadan, NIGERIA. E-mail: <a href="mailto:konsadem@gmail.com">konsadem@gmail.com</a>	ENGINEERING DESIGN OF WASH FACILITIES ACROSS BORNO, ADAMAWA AND YOBE (BAY) STATES Service Contract No: YOL SC 14	GANYE	GOVT. SECONDARY AND PRIMARY SCHOOL, SANGASSUMI. BOREHOLE DETAILS	Drawn :	Damola	
					<b>2ML CONSULTING NIGERIA LTD</b> Office 8, B1-Close Off 69(A) Road Gwarinpa Abuja,	STATE		DRAWING NO.	Traced :	Engr Soji	
Mark :	Date :	Made by :	Revision			ADAMAWA		SCALE	Checked :	MAY 2021	
								BB/BD/07	Date :		
									Ref. No:	USAID/BAY/BU-00	

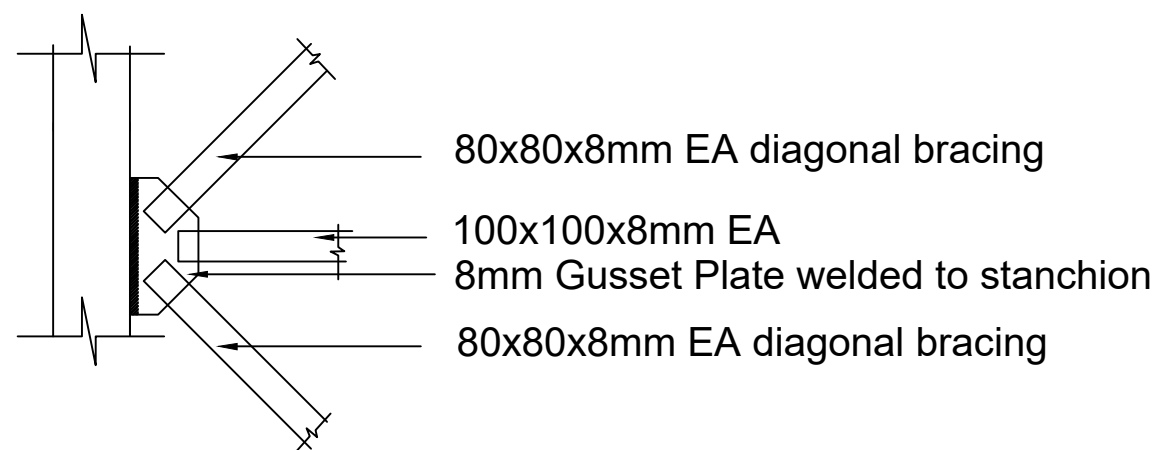


				<div>CLIENT:</div> <div>USAID/MERCY CORPS</div> <div>CONSULTANT</div> <div><div></div><div><b>KONSADEM ASSOCIATES LTD</b> <i>Engineers &amp; Consultants</i> 30, Onireke Layout, P.M. B. 5478, Ibadan, NIGERIA. E-mail:<a href="mailto:konsadem@gmail.com">konsadem@gmail.com</a></div><div><b>2ML CONSULTING NIGERIA LTD</b> Office 8, B1-Close Off 69(A) Road Gwarinpa Abuja,</div><div></div></div>	<div>PROJECT</div> <div>ENGINEERING DESIGN OF WASH FACILITIES ACROSS BORNO, ADAMAWA AND YOBE (BAY) STATES <i>Service Contract No: YOL SC 14</i></div> <div>STATE</div> <div>ADAMAWA</div>	<div>SMALL TOWN</div> <div>GANYE</div>	<div>DRAWING TITLE</div> <div>PHC OLD MARKET</div> <div>ELEVATED STORAGE TANK (25 Cu.m) TANK FOOTING PLAN</div> <div><div>DRAWING NO.</div><div>AD/BD/O I</div><div>SCALE</div></div> <div><div>Designed: Engr Soji</div><div>Drawn : Damola</div><div>Traced :</div><div>Checked : Engr Soji</div><div>Date : MAY 2021</div><div><div>Ref. No:</div><div>USAID/BAY/AD-00</div></div></div>	<div>STAMP</div>	
Mark : Date : Made by : Revision									

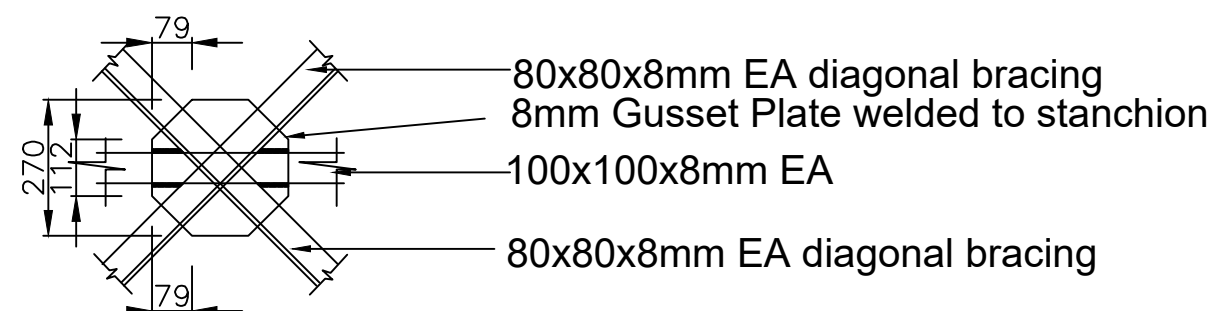




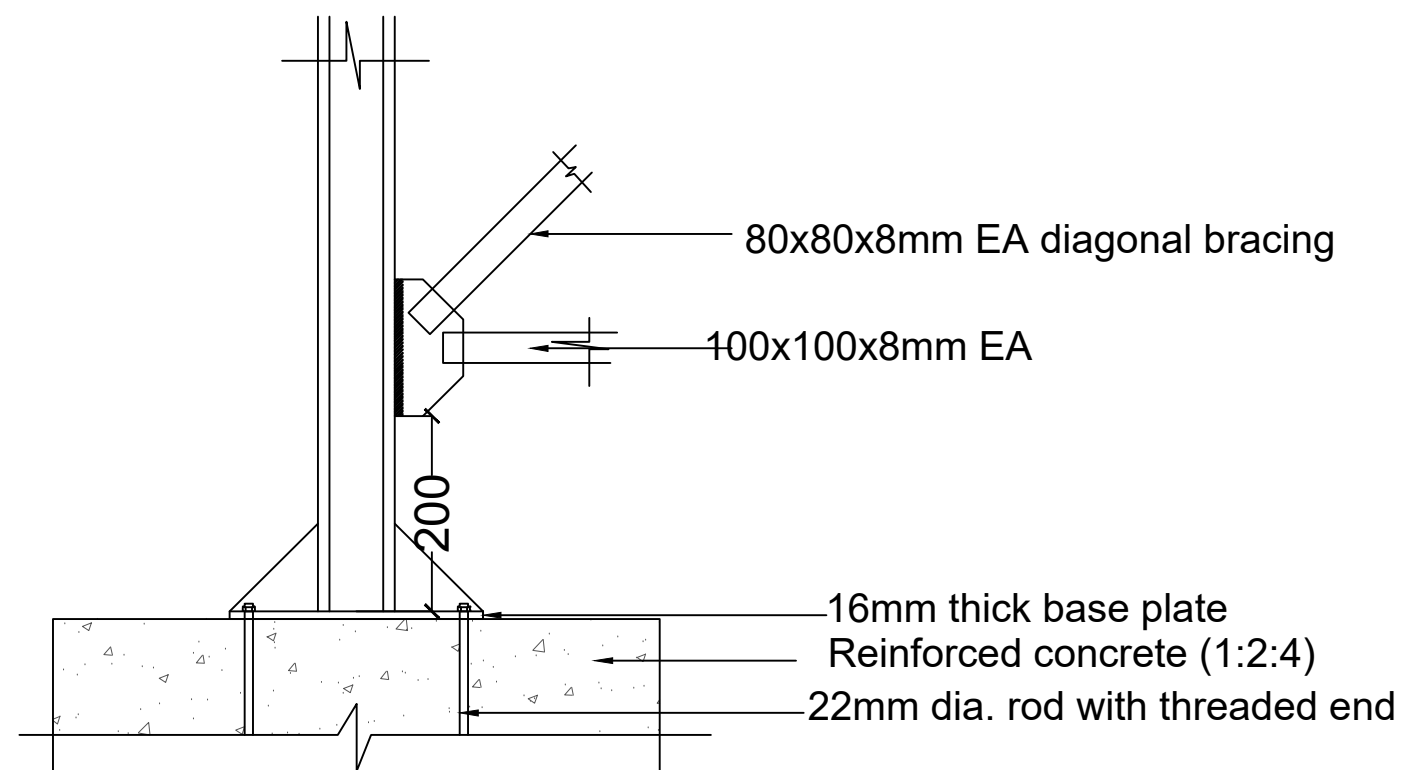




**DETAIL-B**

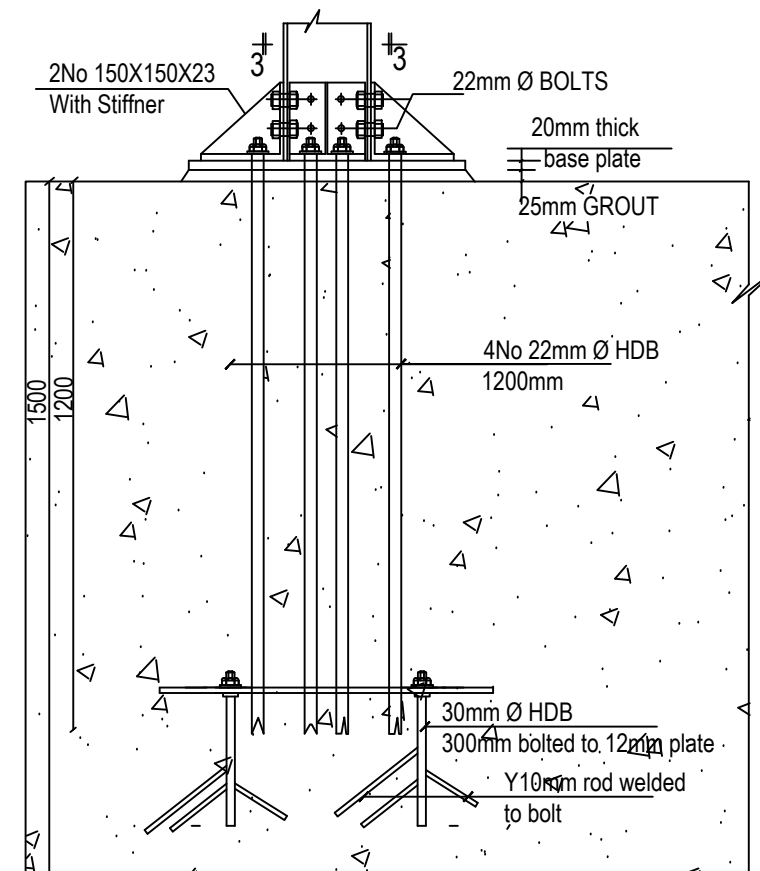
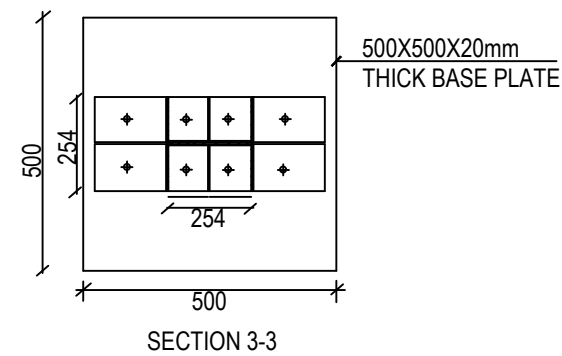
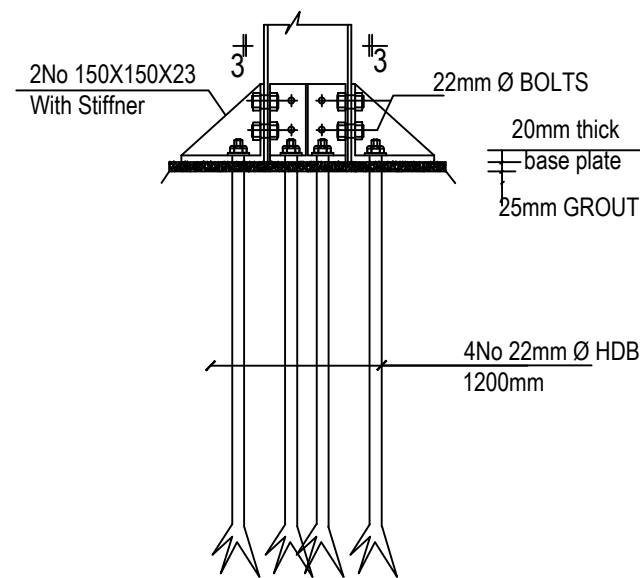
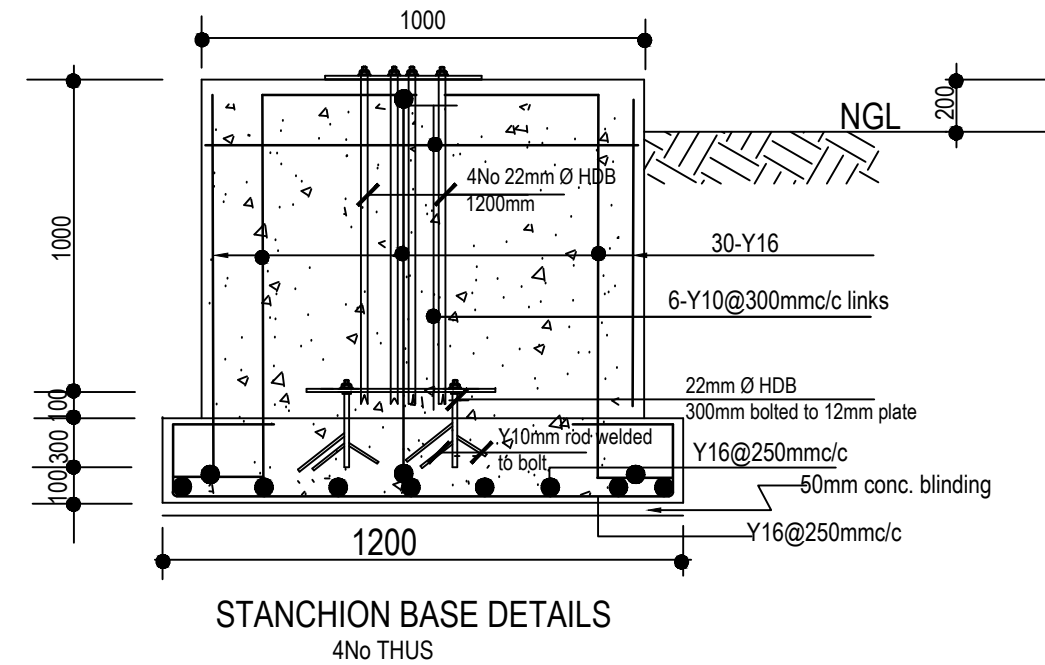
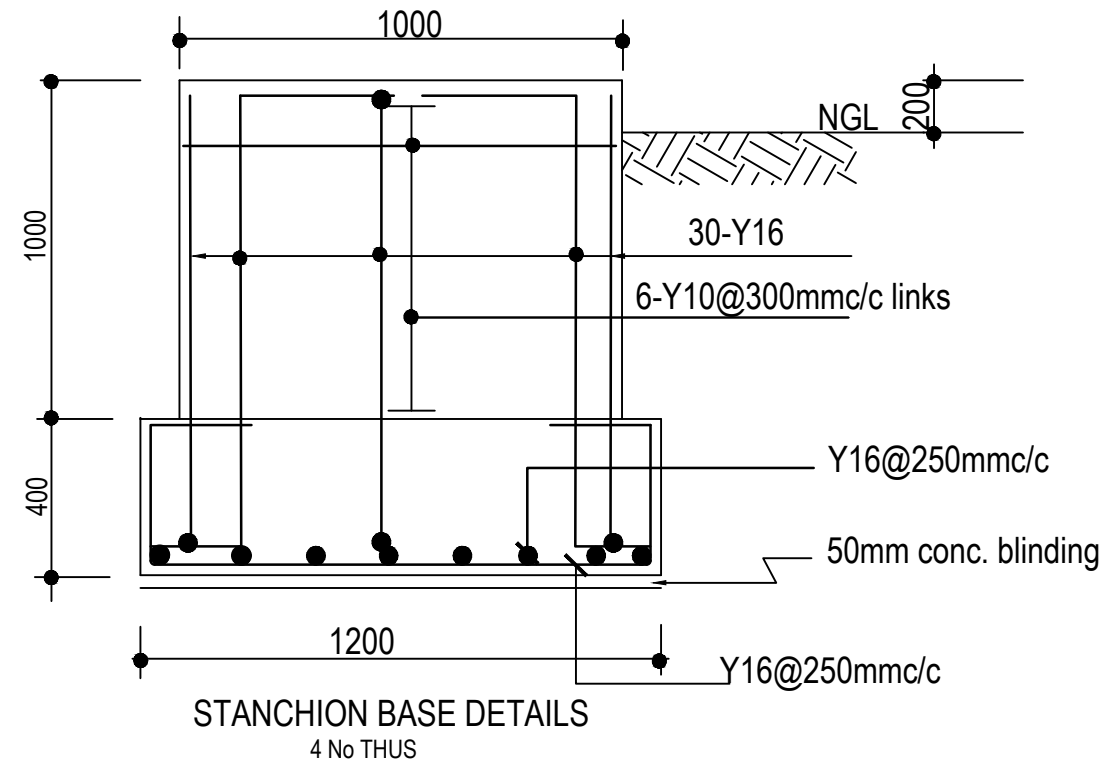


**DETAIL-C**

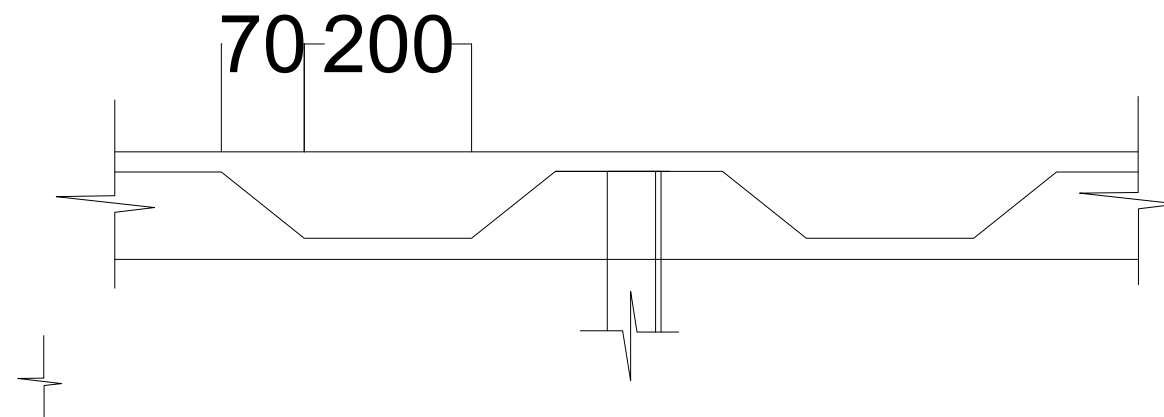
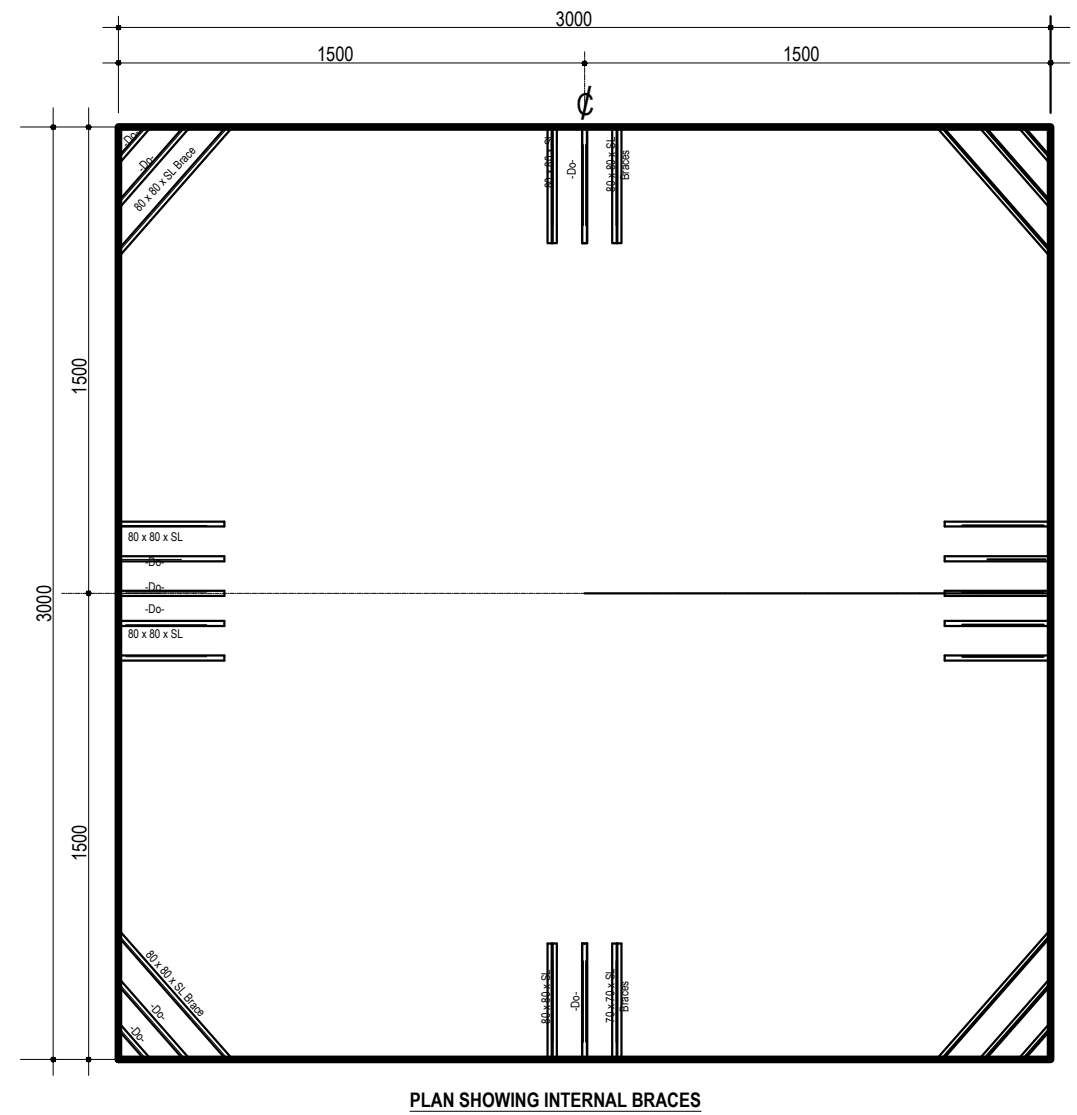


**DETAIL-A**

				<div>CLIENT:</div> <div>USAID/MERCY CORPS</div>	<div>PROJECT</div> <div>ENGINEERING DESIGN OF WASH FACILITIES ACROSS BORNO, ADAMAWA AND YOBE (BAY) STATES</div> <div>Service Contract No: YOL SC 14</div>	<div>SMALL TOWN</div> <div>GANYE</div>	<div>DRAWING TITLE</div> <div>PHC OLD MARKET</div>		<div>Designed:</div> <div>Engr Soji</div>	<div>STAMP</div>
							<div>Drawn :</div> <div>Damola</div>			
							<div>Traced :</div> <div>Checked :</div> <div>Engr Soji</div> <div>Date :</div> <div>MAY 2021</div>			
				<div>CONSULTANT</div> <div><div><div></div><div><div>KONSADEM ASSOCIATES LTD</div><div>Engineers &amp; Consultants</div><div>30, Onireke Layout, P.M. B. 5478, Ibadan, NIGERIA. E-mail:konsadem@gmail.com</div></div></div><div><div>2ML CONSULTING NIGERIA LTD</div><div>Office 8, B1-Close Off 69(A) Road Gwarinpa Abuja,</div><div></div></div></div>	<div>STATE</div> <div>ADAMAWA</div>	<div>DRAWING NO.</div> <div>BB/BD/O3</div>	<div>SCALE</div>	<div>Ref. No:</div> <div>USAID/BAY/BU-00</div>		
<div>Mark : Date : Made by : Revision</div>										



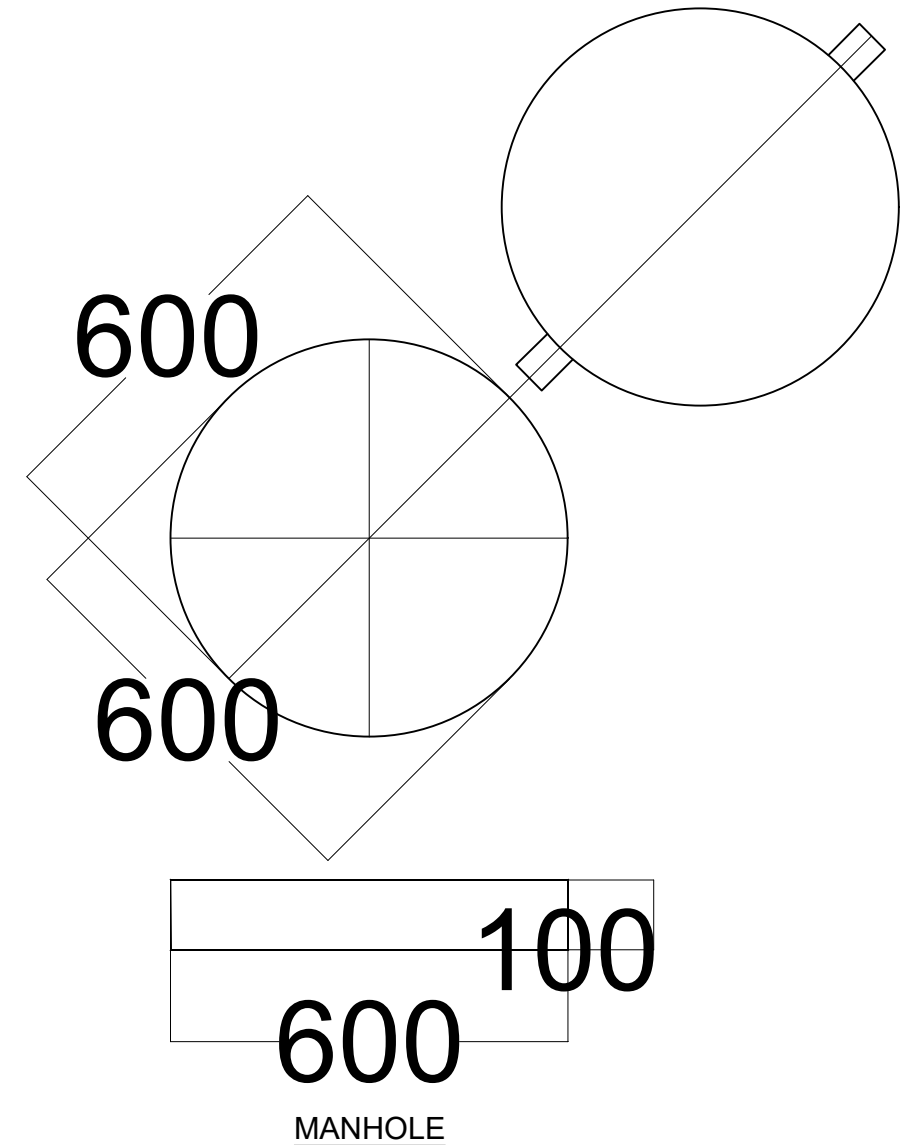
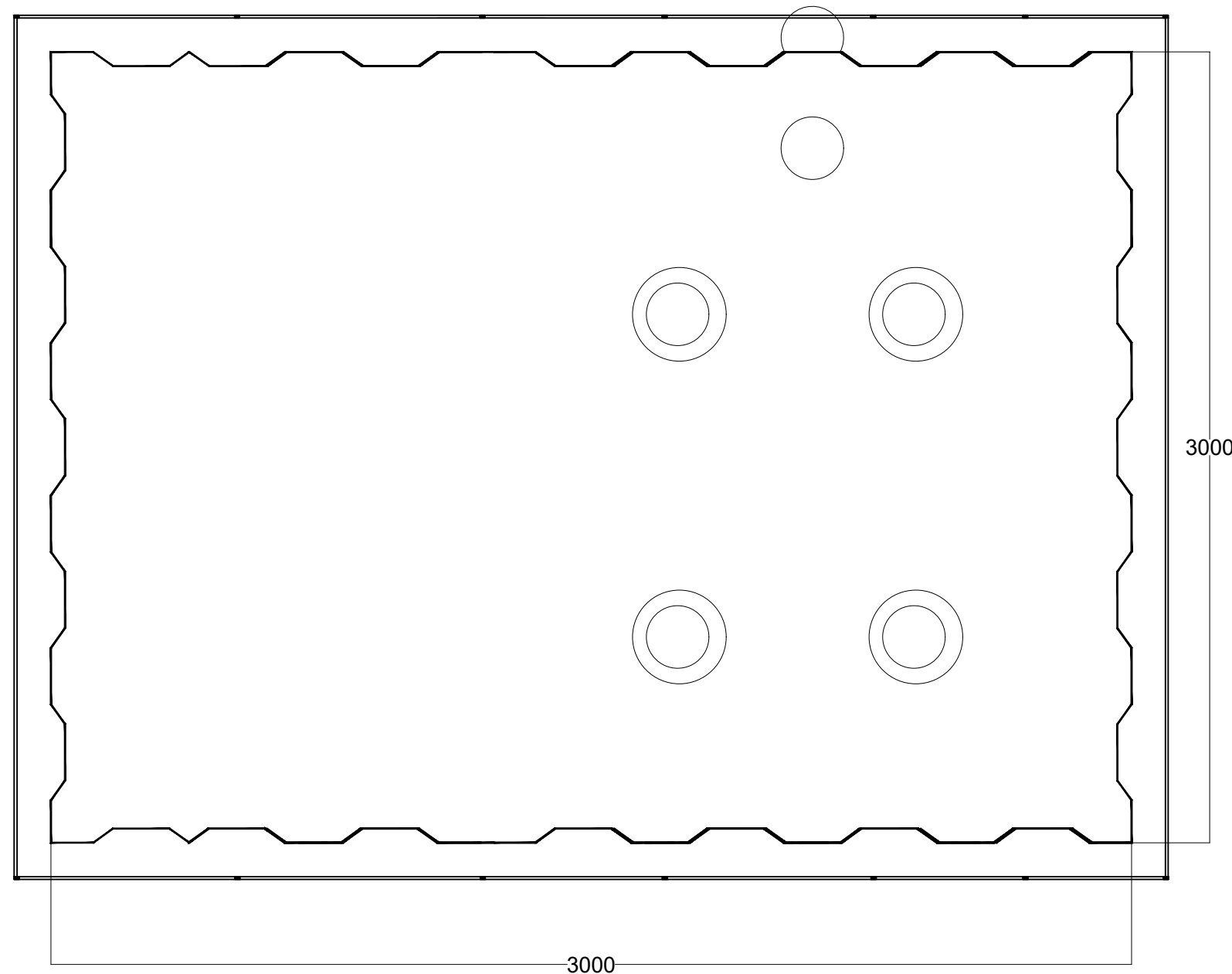
				<div>CLIENT:  USAID/MERCY CORPS</div> <div>CONSULTANT <div><div></div><div><div>KONSADEM ASSOCIATES LTD</div><div>Engineers &amp; Consultants</div><div>30, Onireke Layout, P.M. B. 5478, Ibadan, NIGERIA. E-mail:konsadem@gmail.com</div></div><div><div>2ML CONSULTING NIGERIA LTD</div><div>Office 8, B1-Close Off 69(A) Road Gwarinpa Abuja,</div></div><div></div></div></div>	<div>PROJECT ENGINEERING DESIGN OF WASH FACILITIES ACROSS BORNO, ADAMAWA AND YOBE (BAY) STATES Service Contract No: YOL SC 14</div> <div>STATE  ADAMAWA</div>	<div>SMALL TOWN  GANYE</div>	<div>DRAWING TITLE PHC OLD MARKET</div> <div>ELEVATED STORAGE TANK 25 Cu.m)</div> <div>FOOTING DETAILS</div> <div><div>DRAWING NO. BB/BD/04</div><div>SCALE</div></div>	<div>Designed: Engr Soji</div> <div>Drawn : Damola</div> <div>Traced :</div> <div>Checked : Engr Soji</div> <div>Date : MAY 2021</div> <div>Ref. No: USAID/BAY/BU-00</div> <div>STAMP</div>
Mark :	Date :	Made by :	Revision					



				<b>CLIENT:</b> USAID/MERCY CORPS	<b>PROJECT</b> ENGINEERING DESIGN OF WASH FACILITIES ACROSS BORNO, ADAMAWA AND YOBE (BAY) STATES Service Contract No: YOL SC 14	<b>SMALL TOWN</b> GANYE	<b>DRAWING TITLE</b> PHC OLD MARKET ELEVATED STORAGE TANK 25 Cu.m) WATER TANK DETAILS	<b>Designed:</b> Engr Soji <b>Drawn :</b> Damola <b>Traced :</b> <b>Checked :</b> Engr Soji <b>Date :</b> MAY 2021	<b>STAMP</b>
				<b>CONSULTANT</b>  <b>KONSADEM ASSOCIATES LTD</b> Engineers & Consultants 30, Onireke Layout, P.M. B. 5478, Ibadan, NIGERIA. E-mail: konsadem@gmail.com	 <b>2ML CONSULTING NIGERIA LTD</b> Office 8, B1-Close Off 69(A) Road Gwarinpa Abuja,	<b>STATE</b> ADAMAWA	<b>DRAWING NO.</b> BB/BD/O5	<b>SCALE</b>	<b>Ref. No:</b> USAID/BAY/BU-00
Mark : Date :    Made by :                      Revision									

### DETAILS AT 'B'

### DETAILS AT 'B'



## NOTES

1. CONCRETE GRADE = 25
2. STEEL GRADE = 43
3. SOIL BEARING CAPACITY(ASSUMED) = 150KN/m<sup>2</sup>
4. WIND LOADING CONDITIONS = 40m/s<sup>2</sup>
5. ELECTRODE: A fox 3.10/4.00mm  
5mm thick fillet weld on body panels  
10mm thick butt welding on base.

- a. Internal section of tank with 1 coat of epoxy primer followed by 2 coats asphaltine paint.
- b. External surface of tank including the access ladder and ventilation beams with with red oxide base followed by 2 coats of HR aluminum paint (5200)

				<div>CLIENT:</div> <div>USAID/MERCY CORPS</div>	<div>PROJECT</div> <div>ENGINEERING DESIGN OF WASH FACILITIES ACROSS BORNO, ADAMAWA AND YOBE (BAY) STATES</div> <div>Service Contract No:YOL SC 14</div>	<div>SMALL TOWN</div> <div>GANYE</div>	<div>DRAWING TITLE</div> <div>PHC OLD MARKET</div> <div>ELEVATED STORAGE TANK 25 Cu.m)</div> <div>WATER TANK DETAILS</div>	<div>Designed:</div> <div>Engr Soji</div> <div>Drawn :</div> <div>Damola</div> <div>Traced :</div> <div></div> <div>Checked :</div> <div>Engr Soji</div> <div>Date :</div> <div>MAY 2021</div>	<div>STAMP</div>
				<div>CONSULTANT</div> <div><div><div></div><div><div>KONSADEM ASSOCIATES LTD</div><div>Engineers &amp; Consultants</div><div>30, Onireke Layout, P.M. B. 5478, Ibadan, NIGERIA. E-mail:konsadem@gmail.com</div></div></div><div><div>2ML CONSULTING NIGERIA LTD</div><div>Office 8, B1-Close Off 69(A) Road Gwarinpa Abuja,</div><div></div></div></div>	<div>STATE</div> <div>ADAMAWA</div>		<div>DRAWING NO.</div>	<div>SCALE</div> <div>BB/BD/OG</div>	<div>Ref. No:</div> <div>USAID/BAY/BU-00</div>
Mark : Date : Made by : Revision									

