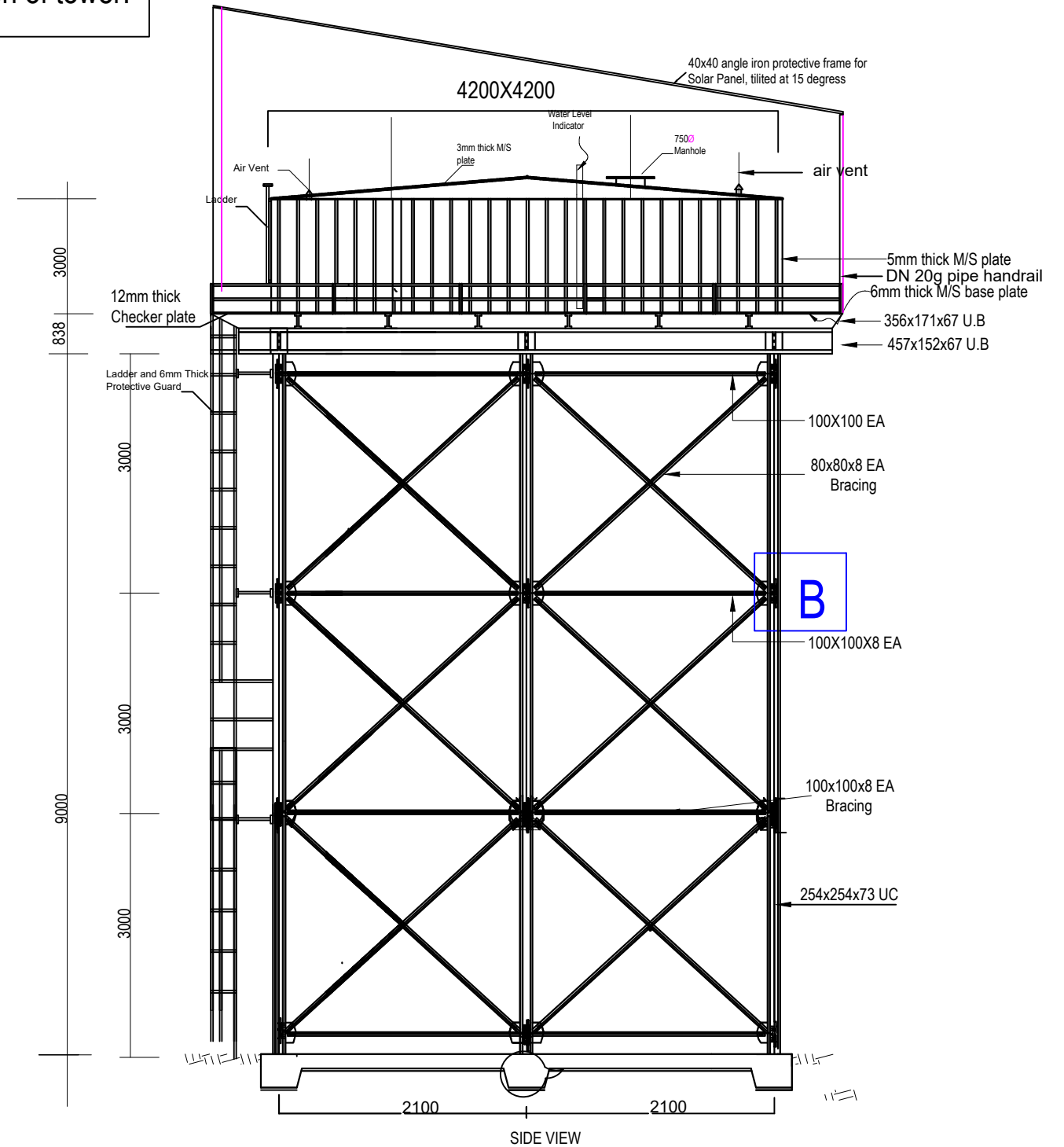
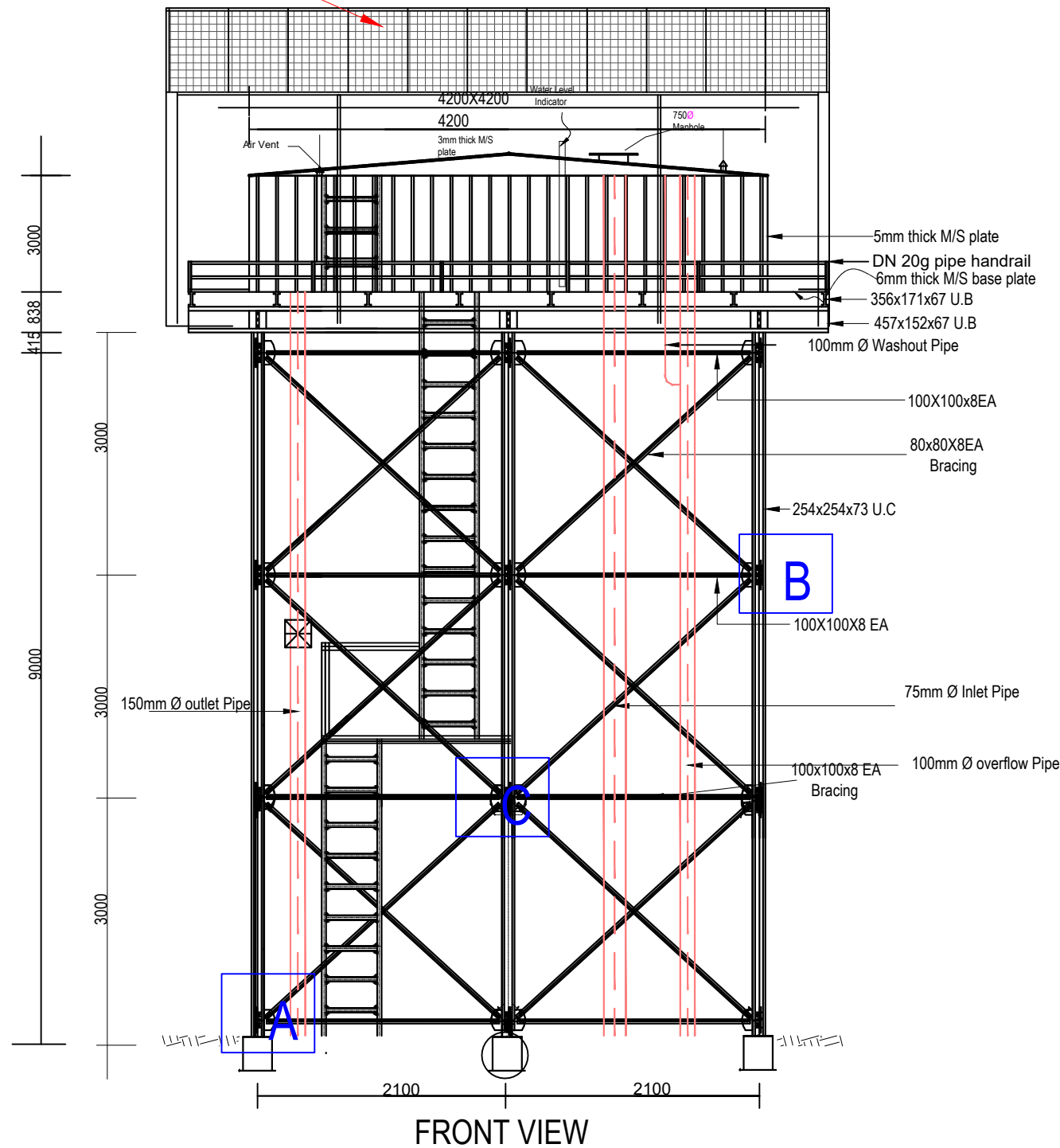


				CLIENT:	USAID/MERCY CORPS	PROJECT	SMALL TOWN	DRAWING TITLE	Designed:	Engr Soji	STAMP
				CONSULTANT	<b>KONSADEM ASSOCIATES LTD</b> Engineers & Consultants 30, Onireke Layout, P.M. B. 5478, Ibadan, NIGERIA. E-mail: <a href="mailto:konsadem@gmail.com">konsadem@gmail.com</a>	ENGINEERING DESIGN OF WASH FACILITIES ACROSS BORNO, ADAMAWA AND YOBE (BAY) STATES Service Contract No: YOL SC 14	DUMNE	DUMNE MAIN WATER SCHEME ELEVATED STORAGE TANK 50 Cu.m) TANK FOOTING PLAN	Drawn :	Damola	
					<b>2ML CONSULTING NIGERIA LTD</b> Office 8, B1-Close Off 69(A) Road Gwarinpa Abuja,	STATE		DRAWING NO.	Checked :	Engr Soji	
Mark :	Date :	Made by :	Revision			ADAMAWA		AD/BD/O I	Date :	MAY 2021	
								SCALE	Ref. No:	USAID/BAY/AD-00	

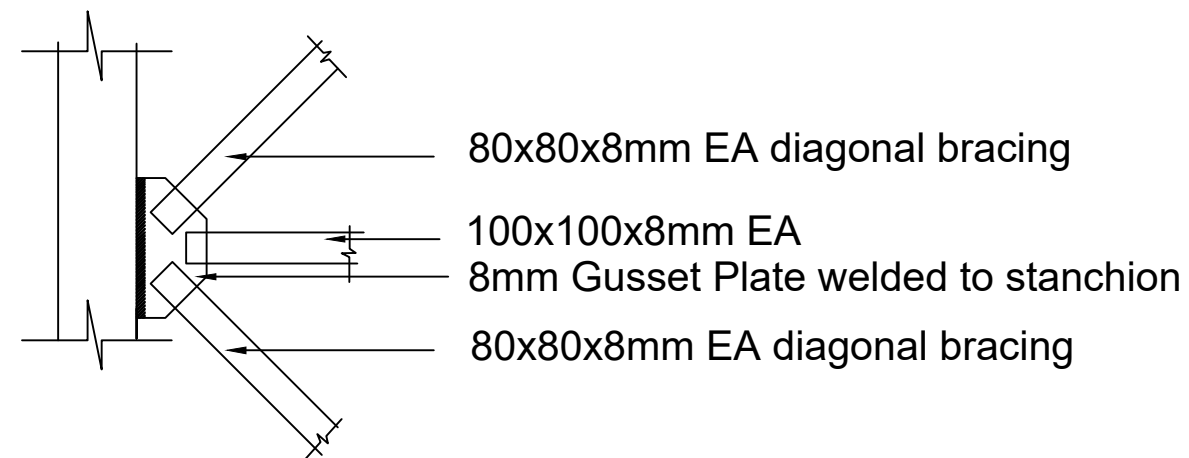
# NOTE:

Soil bearing capacity is to be determined by contractor on site for the foundation of tower.

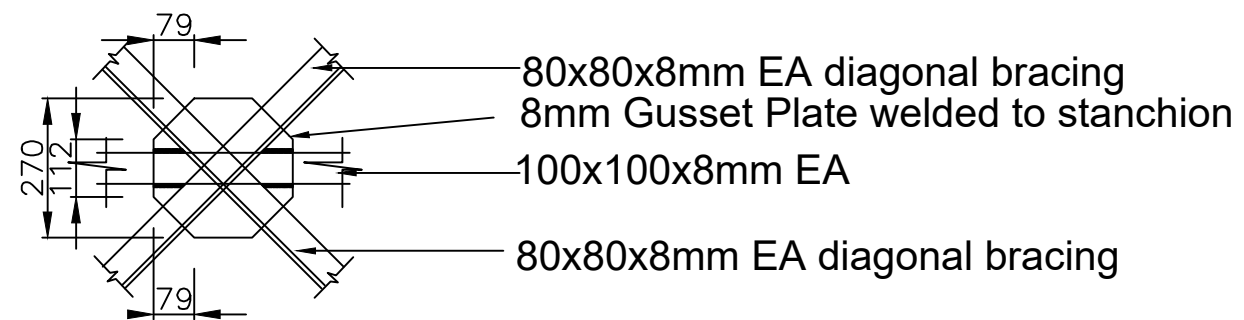
SOLAR PANELS



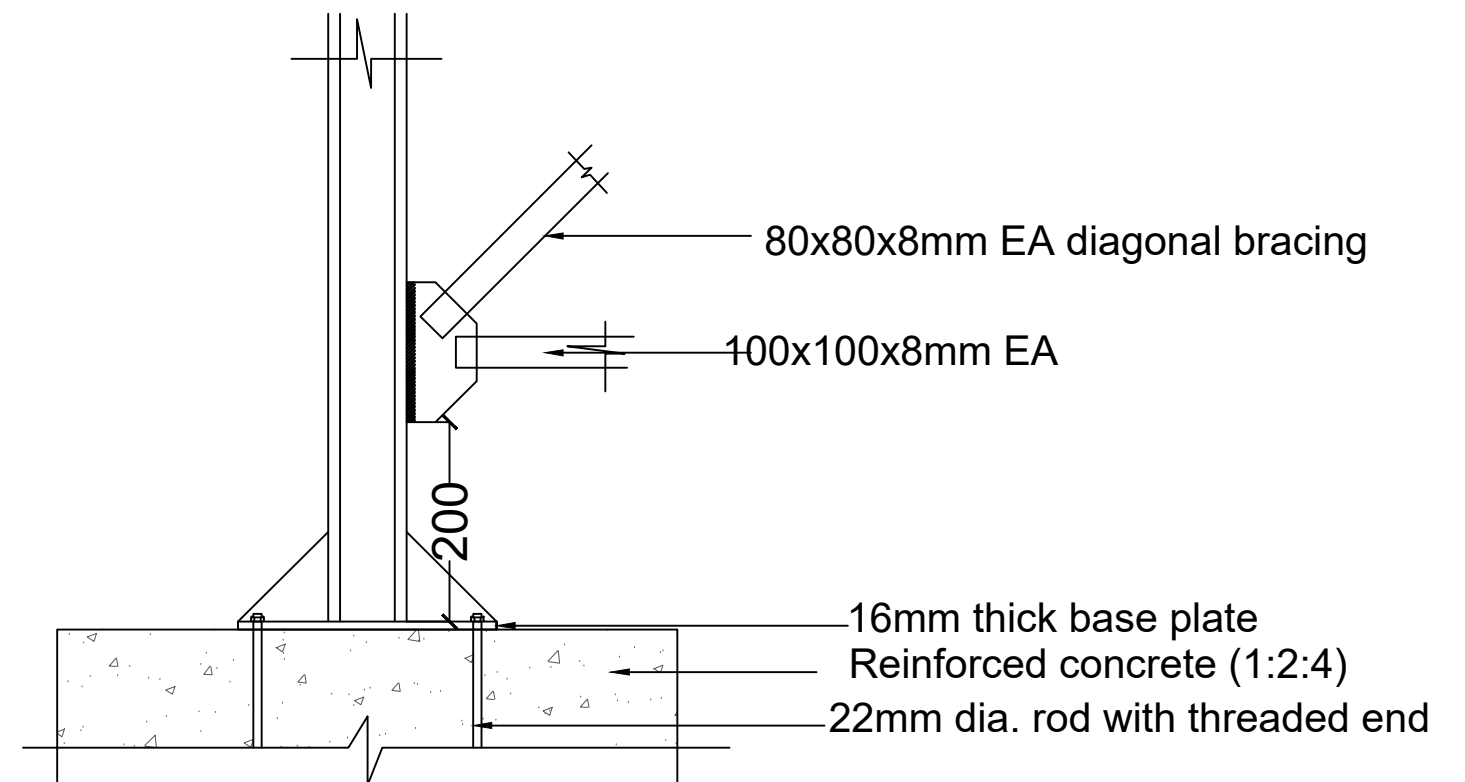
				<div>CLIENT:</div> <div>USAID/MERCY CORPS</div> <div>CONSULTANT</div> <div><div><div><div>KONSADM ASSOCIATES LTD</div><div>Engineers &amp; Consultants</div><div>30, Onireke Layout, P.M. B. 5478, Ibadan, NIGERIA.</div><div>E-mail: konsadm@gmail.com</div></div><div><div>2ML CONSULTING NIGERIA LTD</div><div>Office 8, B1-Close Off 69(A) Road Gwarinpa Abuja,</div><div></div></div></div></div>	<div>PROJECT</div> <div>ENGINEERING DESIGN OF WASH FACILITIES ACROSS BORNO, ADAMAWA AND YOBE (BAY) STATES</div> <div>Service Contract No: YOL SC 14</div> <div>STATE</div> <div>ADAMAWA</div>	<div>SMALL TOWN</div> <div>DUMNE</div>	<div>DRAWING TITLE</div> <div>DUMNE MAIN WATER SCHEME</div> <div>ELEVATED STORAGE TANK 50 Cu.m)</div> <div>TANK VIEWS AND ELEVATION</div> <div><div>DRAWING NO.</div><div>BB/BD/O2</div></div> <div><div>SCALE</div></div>	<div>Designed: Engr Soji</div> <div>Drawn : Damola</div> <div>Traced :</div> <div>Checked : Engr Soji</div> <div>Date : MAY 2021</div> <div><div>Ref. No:</div><div>USAID/BAY/BU-00</div></div>	<div>STAMP</div>																																																																																																																																																																																																																																																																																																																																																																																																																																																																																																																																																																																																																																																																																																																																																																																																																																																																																																																																																																																																																																																																																																																																																																																																																																																																								
Mark : Date : Made by : Revision																																																																																																																																																																																																																																																																																																																																																																																																																																																																																																																																																																																																																																																																																																																																																																																																																																																																																																																																																																																																																																																																																																																																																																																																																																																																																	</



**DETAIL-B**

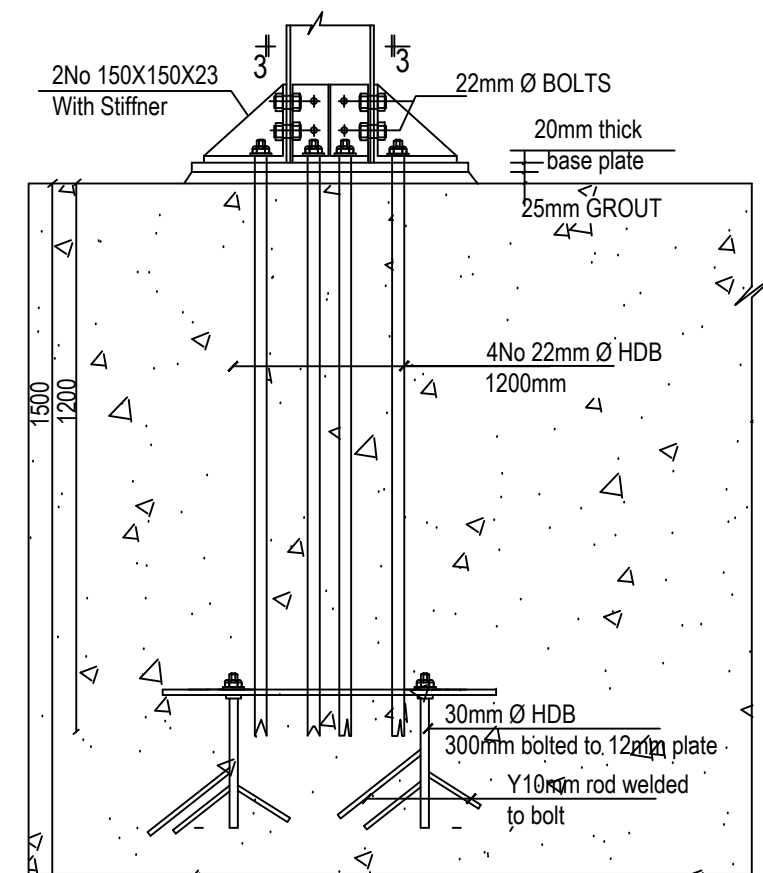
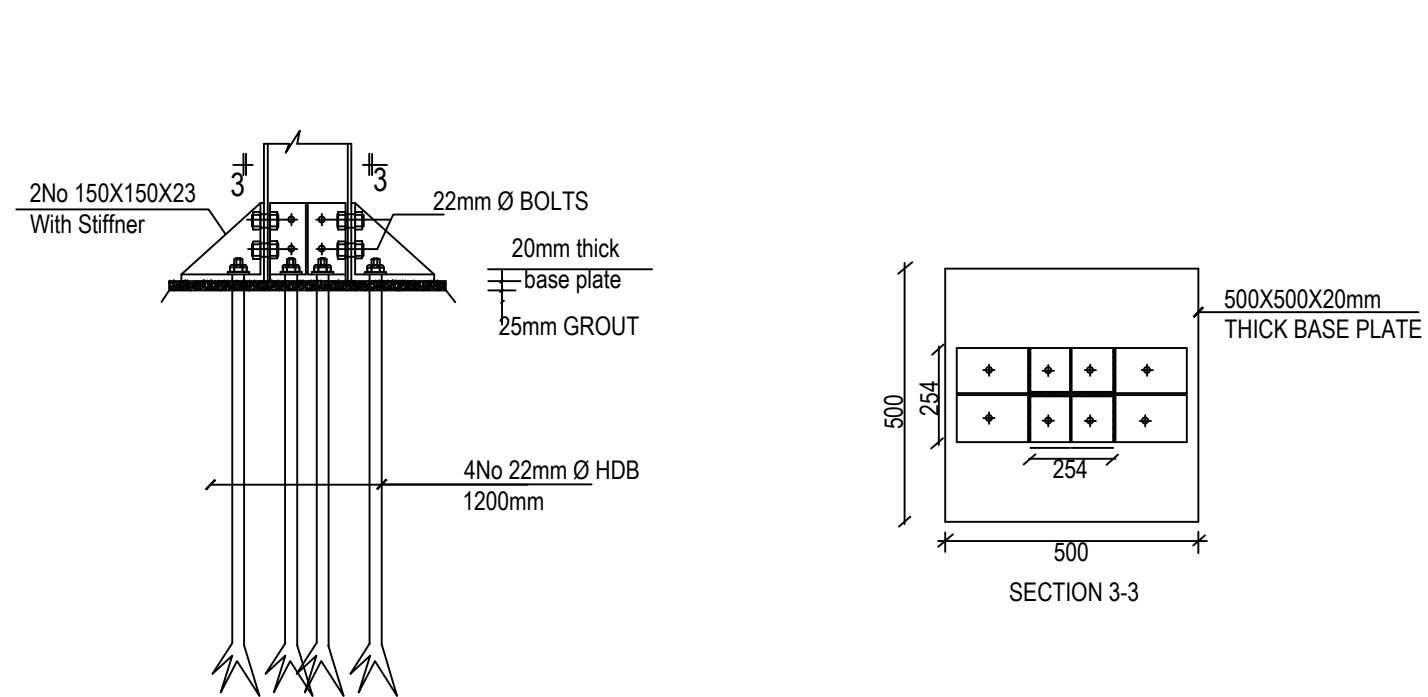
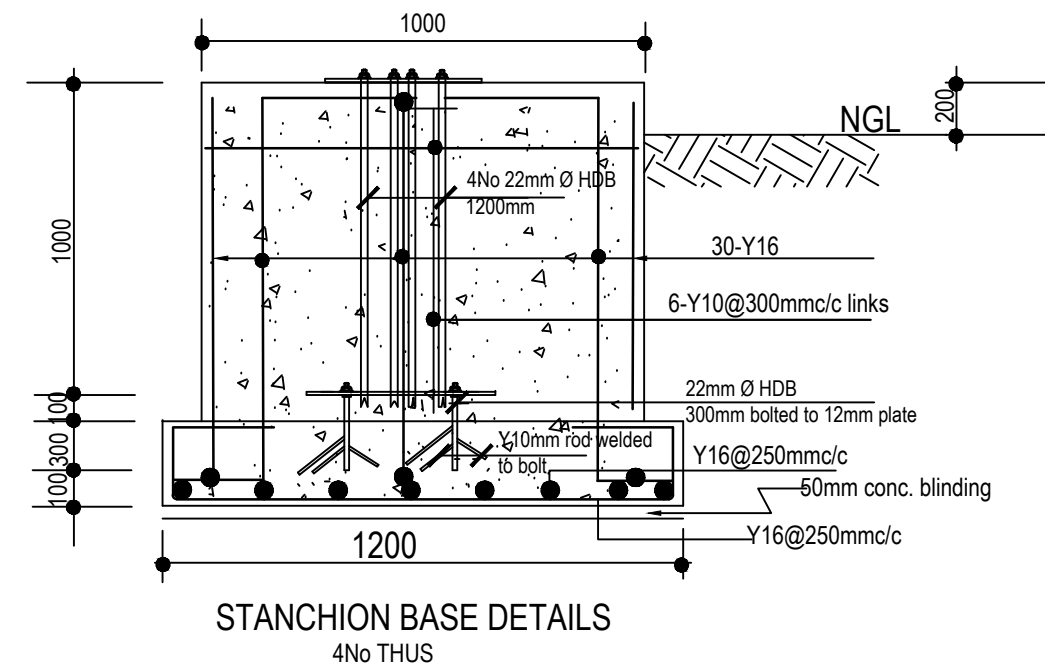


**DETAIL-C**



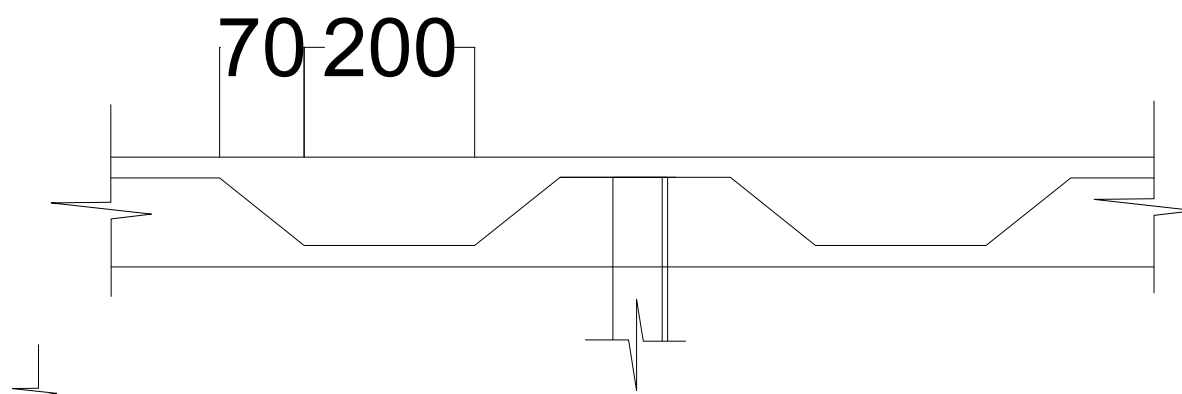
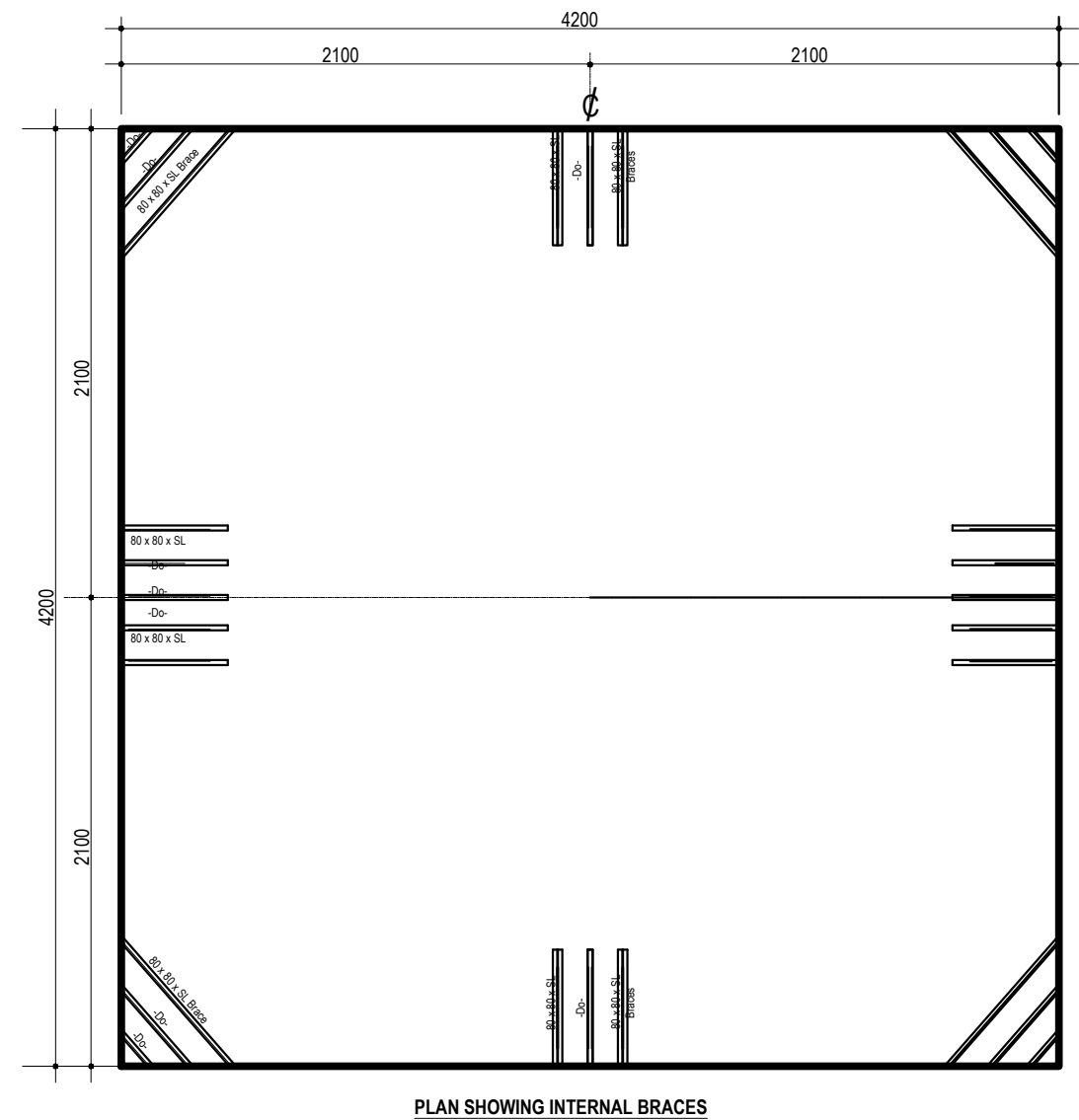
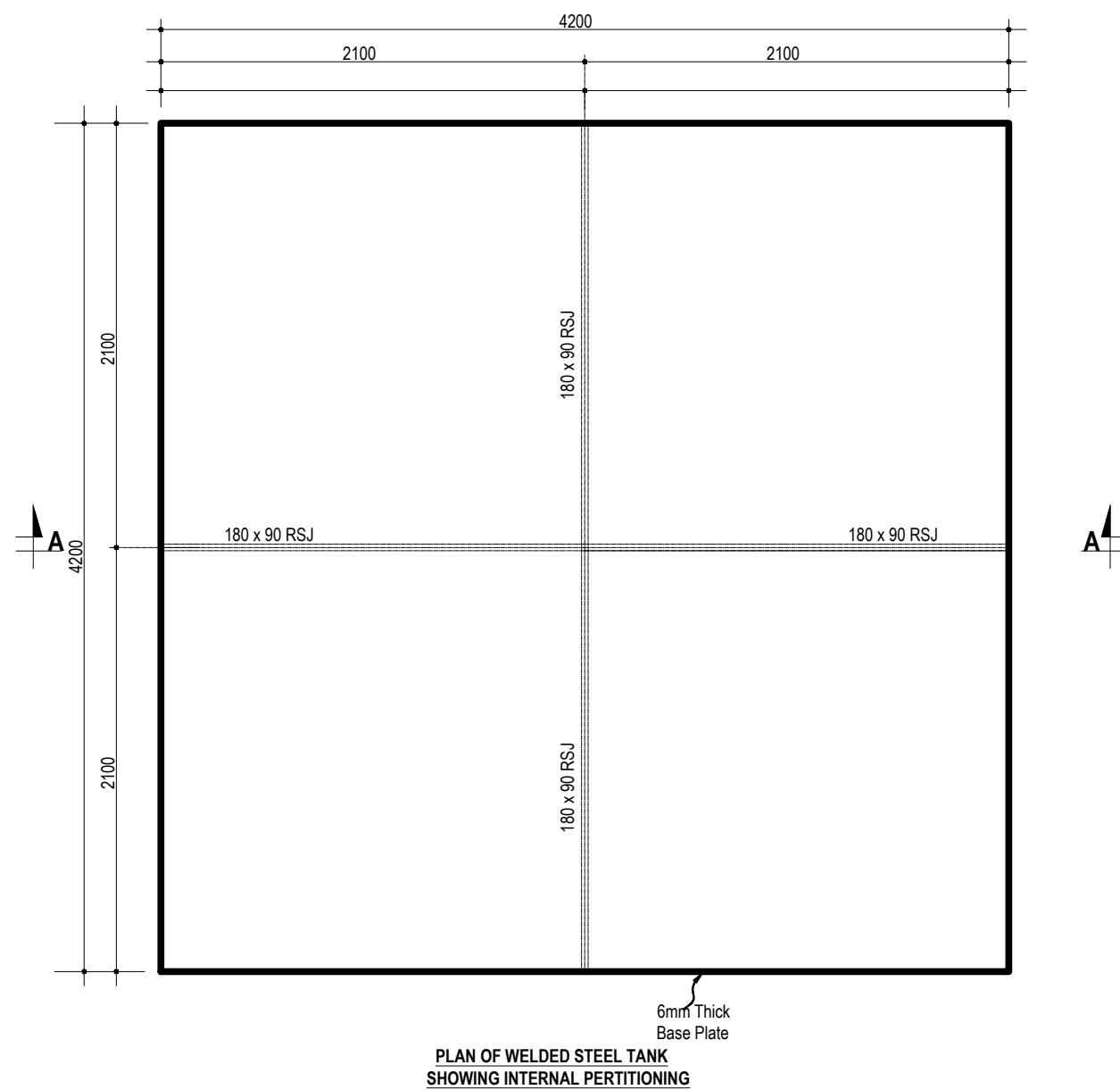
**DETAIL-A**

	<b>CLIENT:</b> USAID/MERCY CORPS	<b>PROJECT</b> ENGINEERING DESIGN OF WASH FACILITIES ACROSS BORNO, ADAMAWA AND YOBE (BAY) STATES	<b>SMALL TOWN</b> DUMNE	<b>DRAWING TITLE</b> DUMNE MAIN WATER SCHEME	<b>Designed:</b> Engr Soji <b>Drawn :</b> Damola	<b>STAMP</b>
	<b>CONSULTANT</b> <b>KONSADEM ASSOCIATES LTD</b> Engineers & Consultants 30, Onireke Layout, P.M. B. 5478, Ibadan, NIGERIA. E-mail: <a href="mailto:konsadem@gmail.com">konsadem@gmail.com</a>	<b>2ML CONSULTING NIGERIA LTD</b> Office 8, B1-Close Off 69(A) Road Gwarinpa Abuja,		<b>ELEVATED STORAGE TANK 50 Cu.m)</b> TANK DETAILS	<b>Traced :</b> <b>Checked :</b> Engr Soji <b>Date :</b> MAY 2021	
Mark : Date : Made by : Revision		<b>STATE</b> ADAMAWA		<b>DRAWING NO.</b> BB/BD/O3	<b>SCALE</b>	<b>Ref. No:</b> USAID/BAY/BU-00



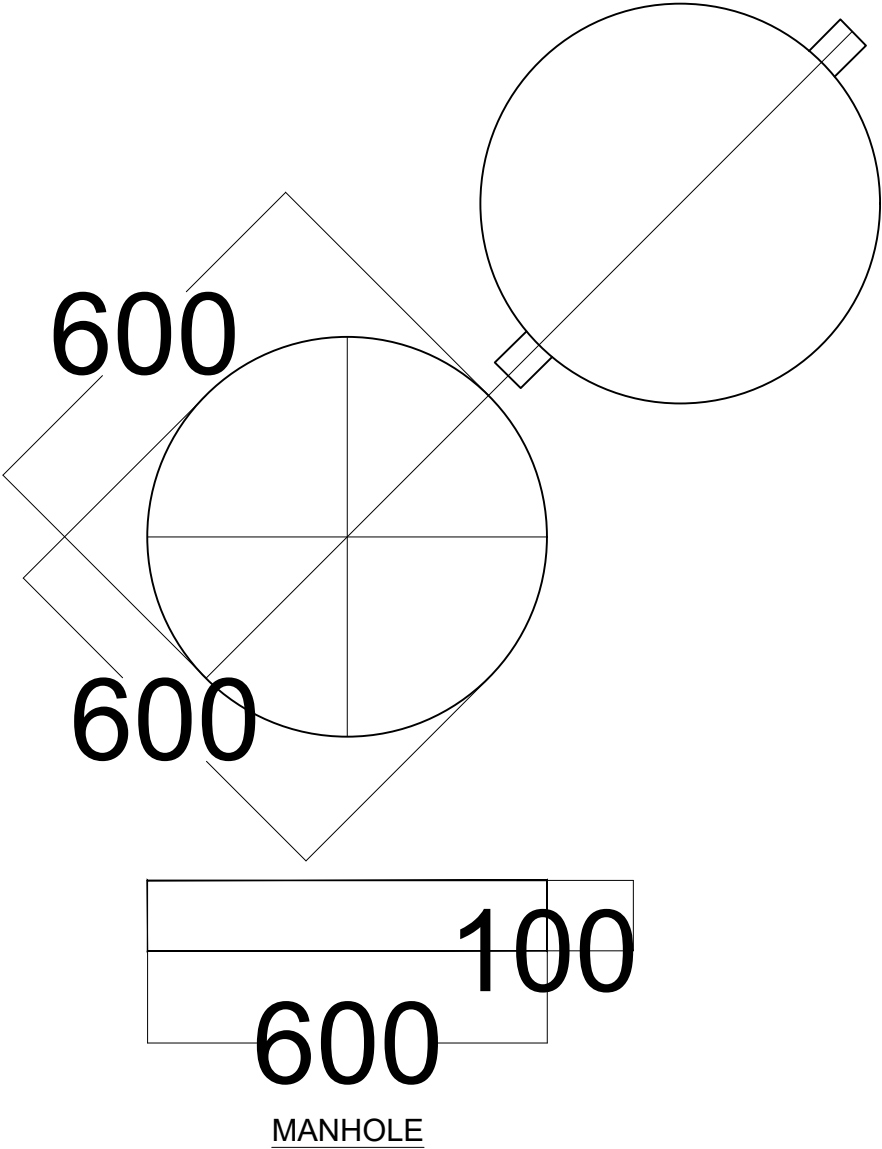
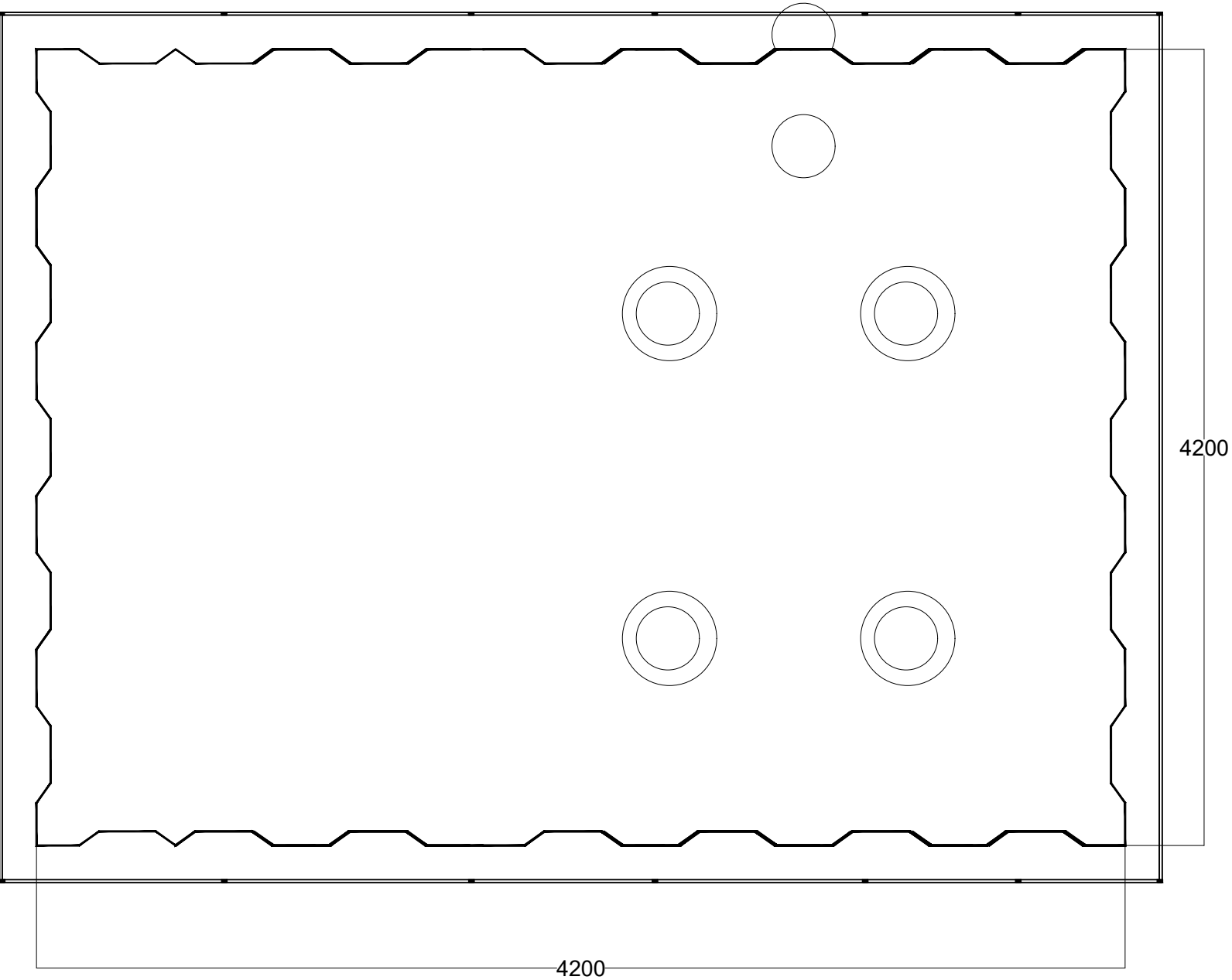
## HDB Details

				<div>CLIENT:</div> <div>USAID/MERCY CORPS</div>	<div>PROJECT</div> <div>ENGINEERING DESIGN OF WASH FACILITIES ACROSS BORNO, ADAMAWA AND YOBE (BAY) STATES</div> <div>Service Contract No: YOL SC 14</div>	<div>SMALL TOWN</div> <div>DUMNE</div>	<div>DRAWING TITLE</div> <div>DUMNE MAIN WATER SCHEME</div> <div>ELEVATED STORAGE TANK 50 Cu.m)</div> <div>FOOTING DETAILS</div>	<div>Designed: Engr Soji</div> <div>Drawn : Damola</div> <div>Traced :</div> <div>Checked : Engr Soji</div> <div>Date : MAY 2021</div>	<div>STAMP</div>
				<div>CONSULTANT</div> <div><div></div><div>KONSADEM ASSOCIATES LTD Engineers &amp; Consultants 30, Onireke Layout, P.M. B. 5478, Ibadan, NIGERIA. E-mail:konsadem@gmail.com</div></div> <div><div></div><div>2ML CONSULTING NIGERIA LTD Office 8, B1-Close Off 69(A) Road Gwarinpa Abuja,</div></div> <div><div></div><div>ADAMAWA</div></div>	<div>STATE</div>	<div>DRAWING NO.</div> <div>BB/BD/O4</div>	<div>SCALE</div>	<div>Ref. No:</div> <div>USAID/BAY/BU-OO</div>	
Mark : Date : Made by : Revision									



				<div>CLIENT:</div> <div>USAID/MERCY CORPS</div> <div>CONSULTANT</div> <div><div><div><div>KONSADEM ASSOCIATES LTD</div><div>Engineers &amp; Consultants</div><div>30, Onireke Layout, P.M. B. 5478, Ibadan, NIGERIA. E-mail: <a href="mailto:konsadem@gmail.com">konsadem@gmail.com</a></div></div><div><div>2ML CONSULTING NIGERIA LTD</div><div>Office 8, B1-Close Off 69(A) Road Gwarinpa Abuja,</div><div></div></div></div></div>	<div>PROJECT</div> <div>ENGINEERING DESIGN OF WASH FACILITIES ACROSS BORNO, ADAMAWA AND YOBE (BAY) STATES Service Contract No: YOL SC 14</div> <div>STATE</div> <div>ADAMAWA</div>	<div>SMALL TOWN</div> <div>DUMNE</div>	<div>DRAWING TITLE</div> <div>DUMNE MAIN WATER SCHEME</div> <div>ELEVATED STORAGE TANK 50 Cu.m)</div> <div>WATER TANK DETAILS</div> <div><div>DRAWING NO.</div><div>BB/BD/O5</div></div> <div><div>SCALE</div></div>	<div>Designed: Engr Soji</div> <div>Drawn : Damola</div> <div>Traced :</div> <div>Checked : Engr Soji</div> <div>Date : MAY 2021</div> <div><div>Ref. No:</div><div>USAID/BAY/BU-00</div></div>	<div>STAMP</div>	
Mark : Date : Made by : Revision										

All bolts connected to gusset plates to be 16mm dia,grade 8.8  
DETAILS AT 'B' DETAILS AT 'B'



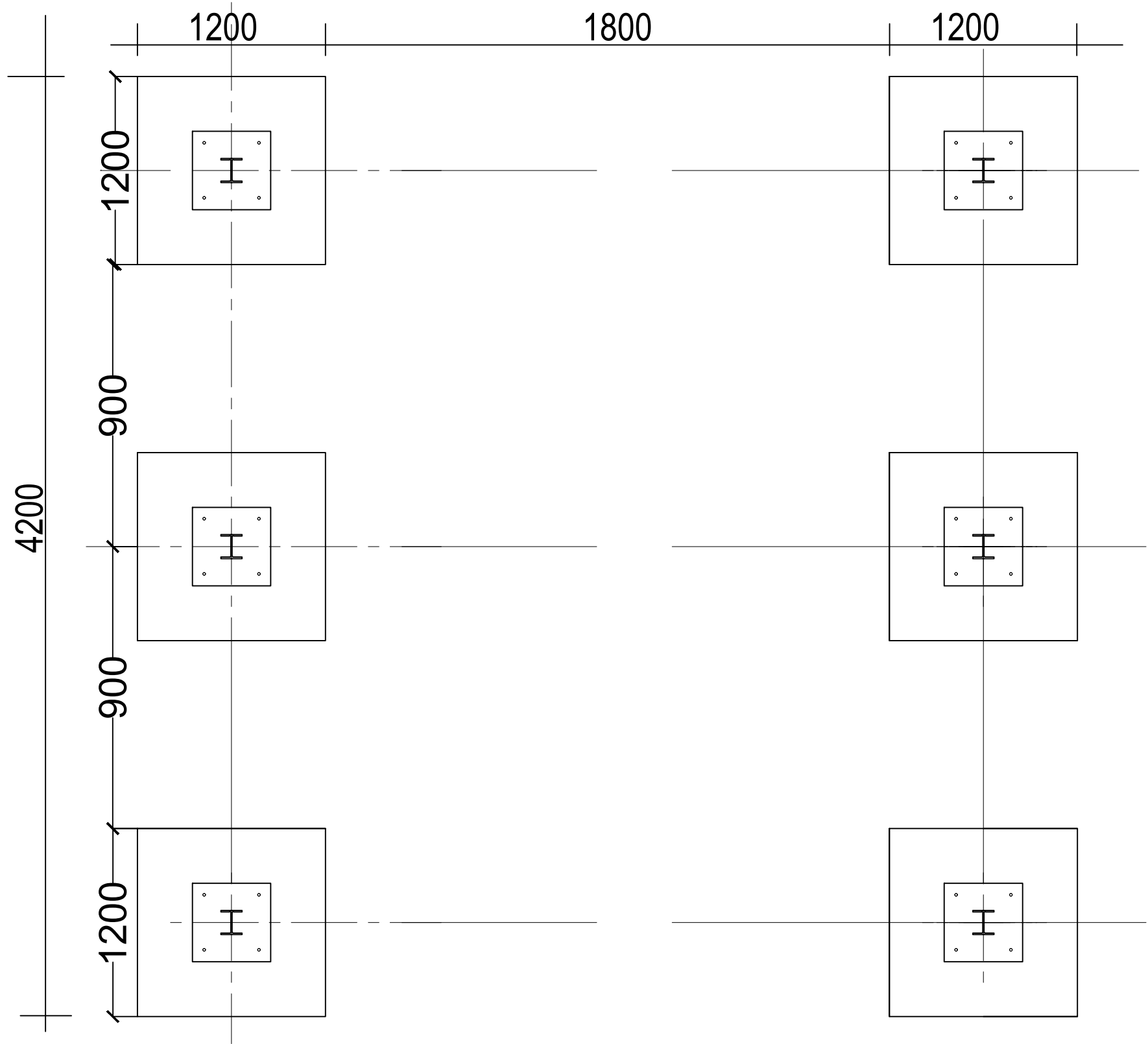
NOTES

- 1. CONCRETE GRADE = 25
- 2. STEEL GRADE = 43
- 3. SOIL BEARING CAPACITY(ASSUMED) = 150KN/m<sup>2</sup>
- 4. WIND LOADING CONDITIONS = 40m/s<sup>2</sup>
- 5. ELECTRODE: A fox 3.10/4.00mm  
5mm thick fillet weld on body panels  
10mm thick butt welding on base.

- PAINTING
- a. Internal section of tank with 1 coat of epoxy primer followed by 2 coats asphaltine paint.
  - b. External surface of tank including the access ladder and ventilation beams with with red oxide base followed by 2 coats of HR aluminum paint (5200)

				CLIENT:	USAID/MERCY CORPS	PROJECT	SMALL TOWN	DRAWING TITLE	Designed: Engr Soji	STAMP
				CONSULTANT	KONSADEM ASSOCIATES LTD	ENGINEERING DESIGN OF WASH FACILITIES ACROSS BORNO, ADAMAWA AND YOBE (BAY) STATES	DUMNE	DUMNE MAIN WATER SCHEME	Drawn : Damola	
					2ML CONSULTING NIGERIA LTD	Service Contract No:YOL SC 14		ELEVATED STORAGE TANK 50 Cu.m)	Traced :	
					Office 8, B1-Close Off 69(A) Road Gwarinpa Abuja,	STATE		WATER TANK DETAILS	Checked : Engr Soji	
Mark :	Date :	Made by :	Revision			ADAMAWA		DRAWING NO.	Date : MAY 2021	
								SCALE	Ref. No:	
								BB/BD/OG	USAID/BAY/BU-OO	





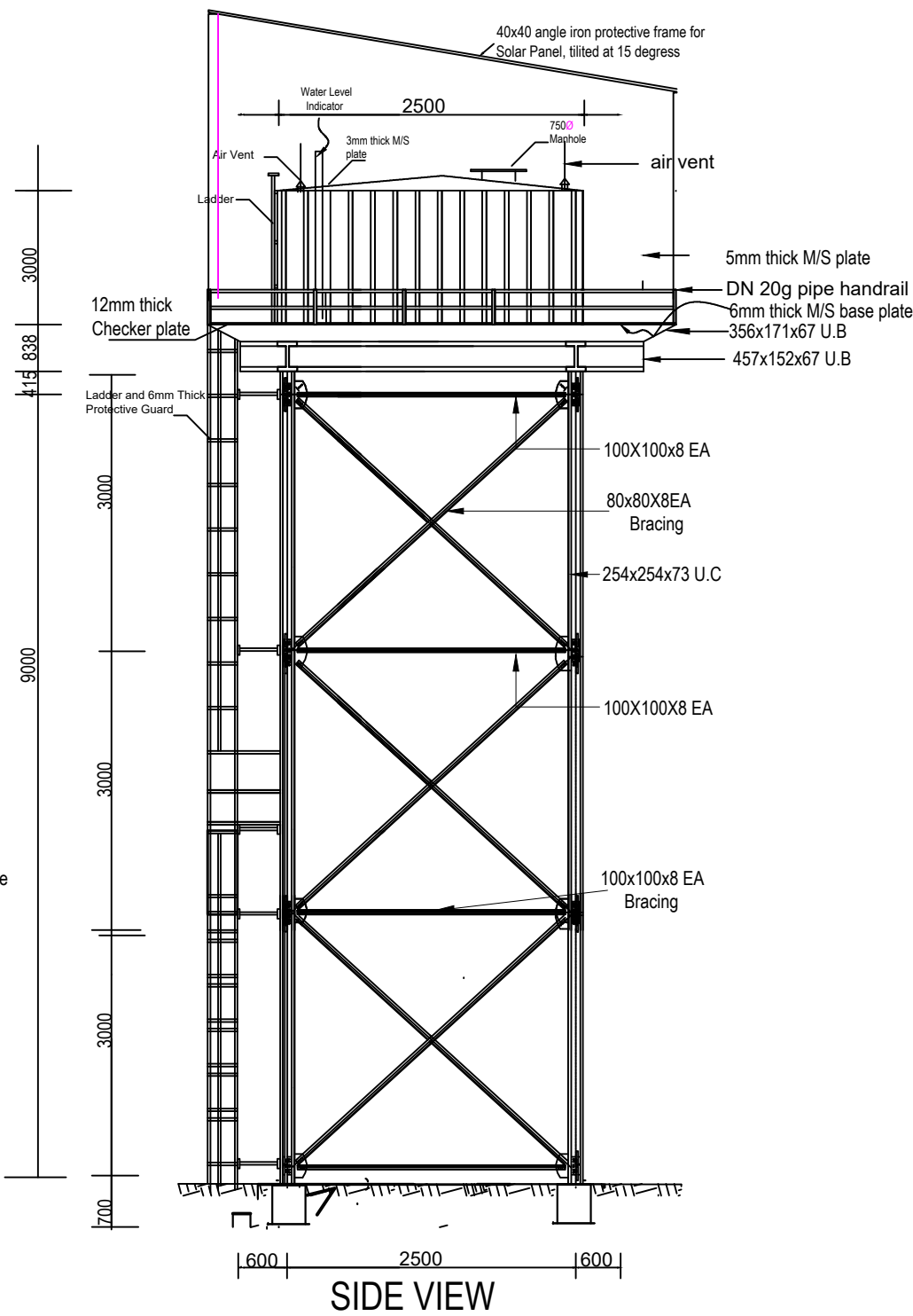
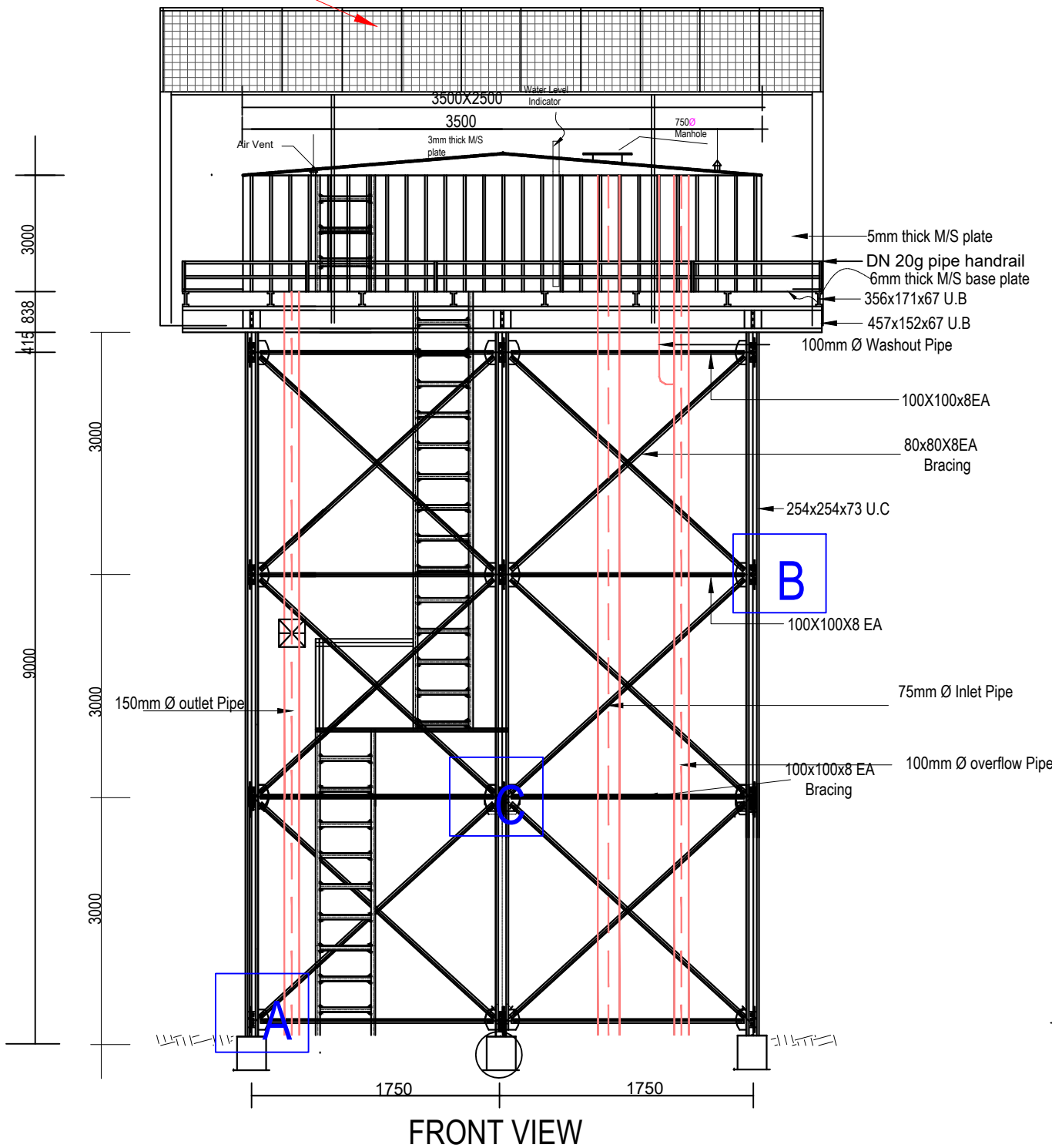
				CLIENT:  USAID/MERCY CORPS	PROJECT  ENGINEERING DESIGN OF WASH FACILITIES ACROSS BORNO, ADAMAWA AND YOBE (BAY) STATES Service Contract No:YOL SC 14	SMALL TOWN  DUMNE	DRAWING TITLE DUMNE HEALTH CENTER WATER SCHEME  ELEVATED STORAGE TANK (25 Cu.m) TANK FOOTING PLAN	Designed:	Engr Soji	STAMP
								Drawn :	Damola	
								Traced :		
				CONSULTANT	 <b>KONSADEM ASSOCIATES LTD</b> Engineers & Consultants 30, Onireke Layout, P.M. B. 5478, Ibadan, NIGERIA. E-mail:konsadem@gmail.com	 <b>2ML CONSULTING NIGERIA LTD</b> Office 8, B1-Close Off 69(A) Road Gwarinpa Abuja,	Checked :	Engr Soji		
							Date :	MAY 2021		
Mark :	Date :	Made by :	Revision				DRAWING NO.	SCALE	Ref. No:	
						ADAMAWA	AD/BD/O I		USAID/BAY/AD-OO	



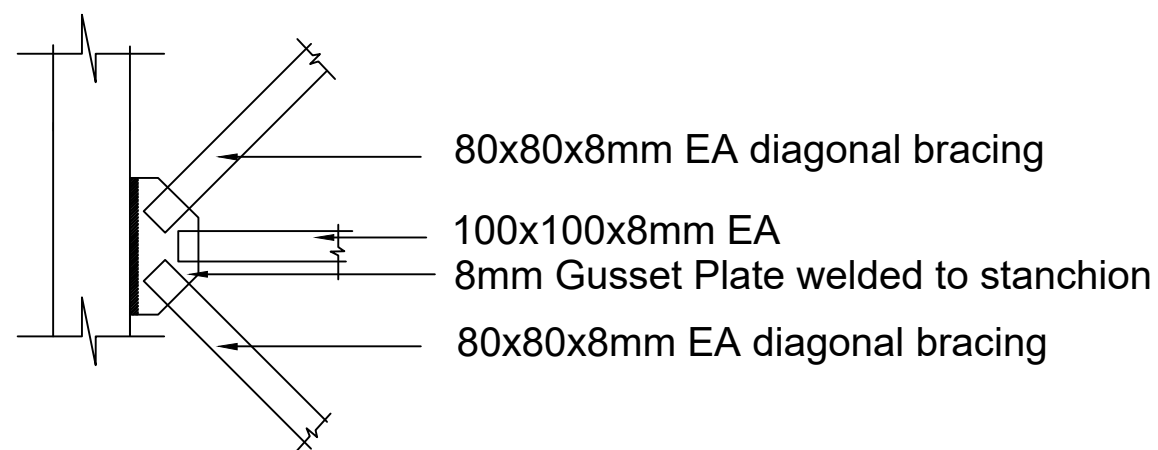
NOTE:

Soil bearing capacity is to be determined by contractor on site for the foundation of tower.

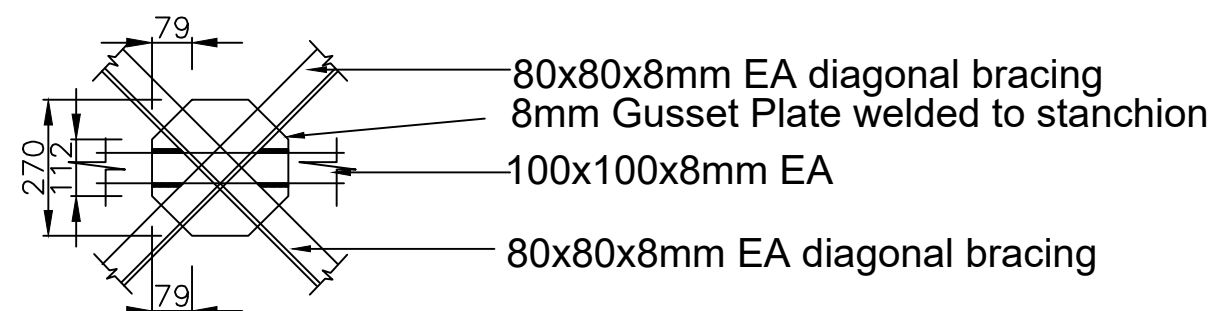
SOLAR PANELS



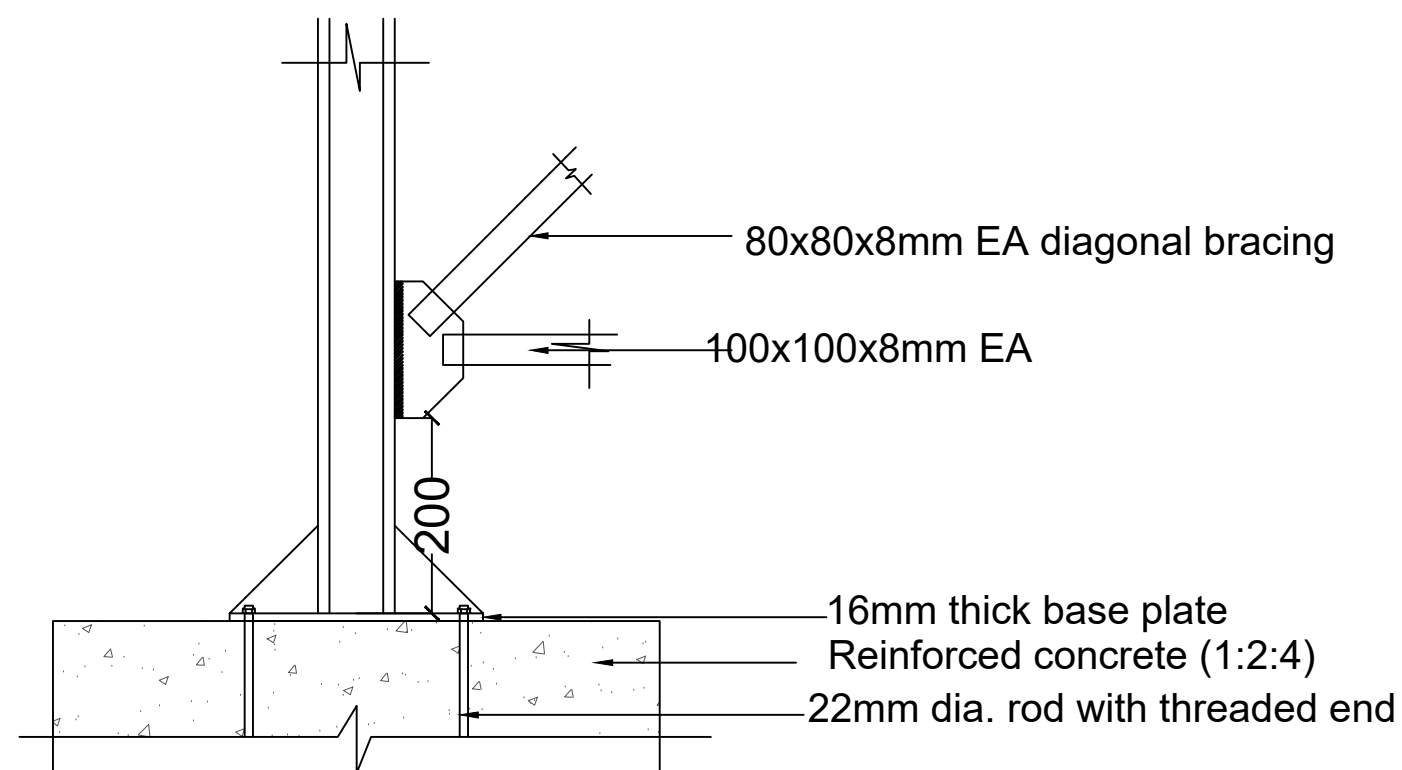
				CLIENT:	USAID/MERCY CORPS		PROJECT	SMALL TOWN	DRAWING TITLE		Designed: Engr Soji	STAMP
				CONSULTANT	 <b>KONSADEM ASSOCIATES LTD</b> <i>Engineers &amp; Consultants</i> 30, Onireke Layout, P.M. B. 5478, Ibadan, NIGERIA. E-mail: <a href="mailto:konsadem@gmail.com">konsadem@gmail.com</a>	<b>2ML CONSULTING NIGERIA LTD</b> Office 8, B1-Close Off 69(A) Road Gwarinpa Abuja,		DUMNE	DUMNE HEALTH CENTER WATER SCHEME		Drawn : Damola	
									ELEVATED STORAGE TANK 25 Cu.m)		Traced :	
									TANK VIEWS AND ELEVATION		Checked : Engr Soji	
Mark : Date : Made by : Revision							STATE		DRAWING NO.	SCALE	Date : MAY 2021	Ref. No:
							ADAMAWA		BB/BD/O2			USAID/BAY/BU-OO



**DETAIL-B**

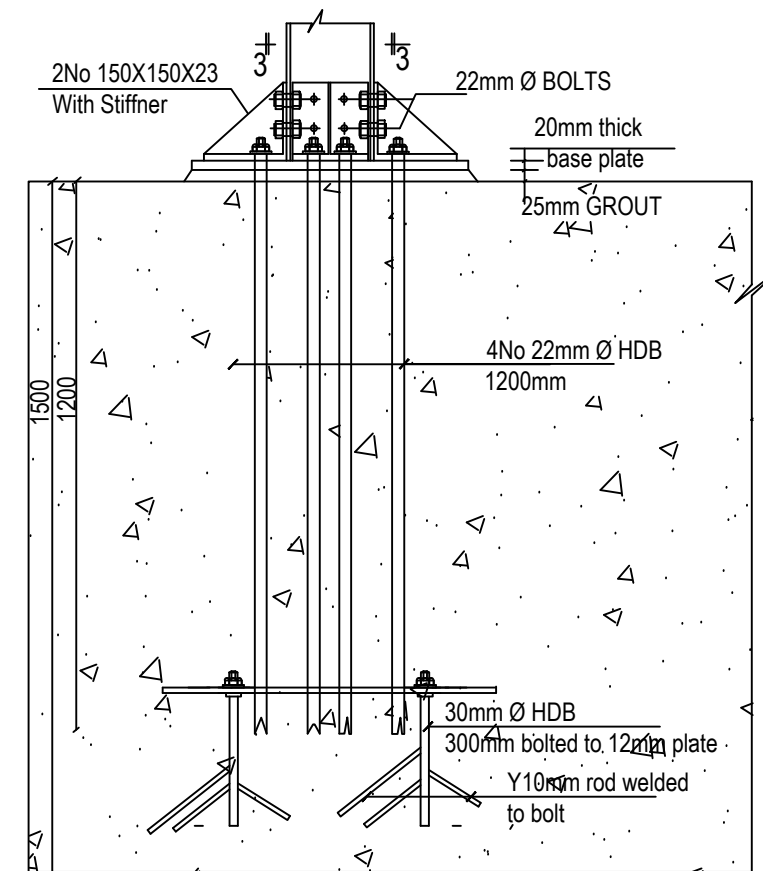
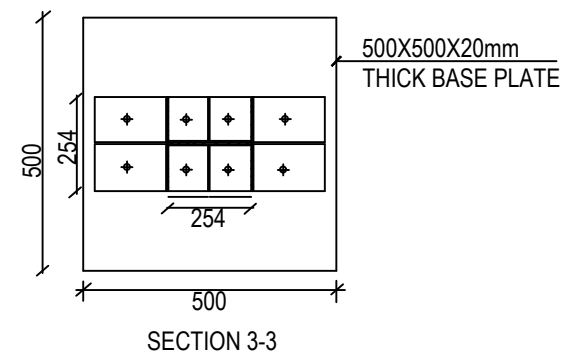
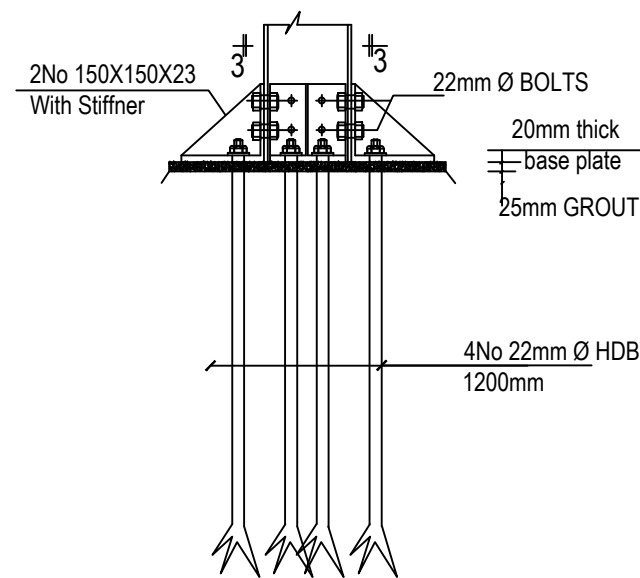
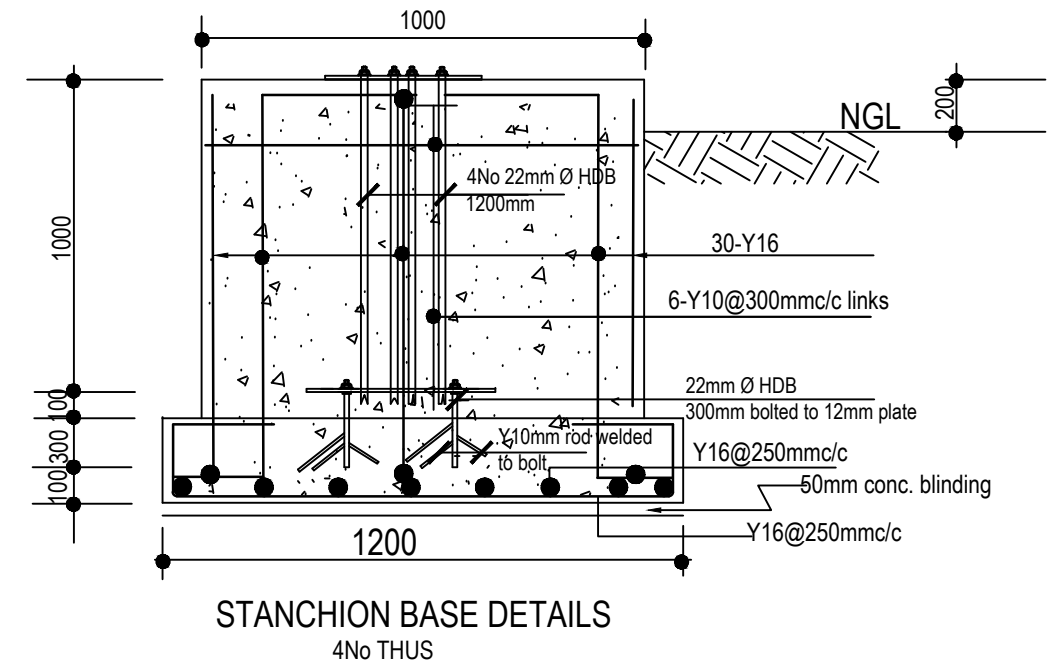
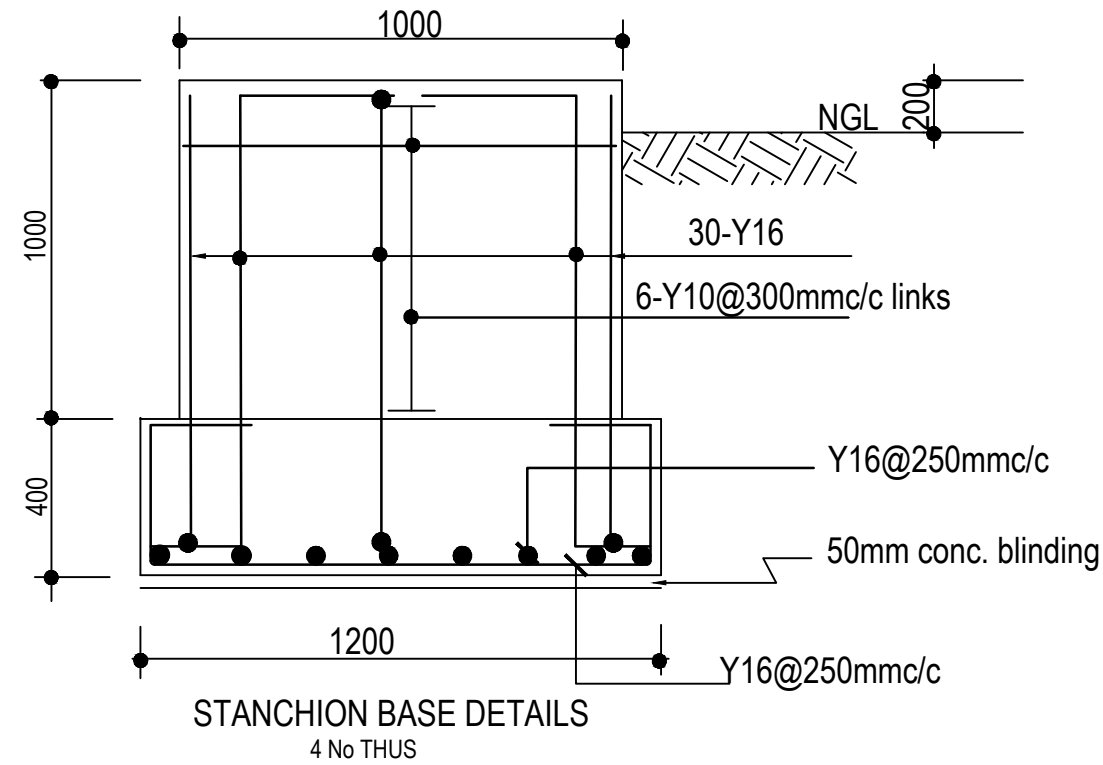


**DETAIL-C**

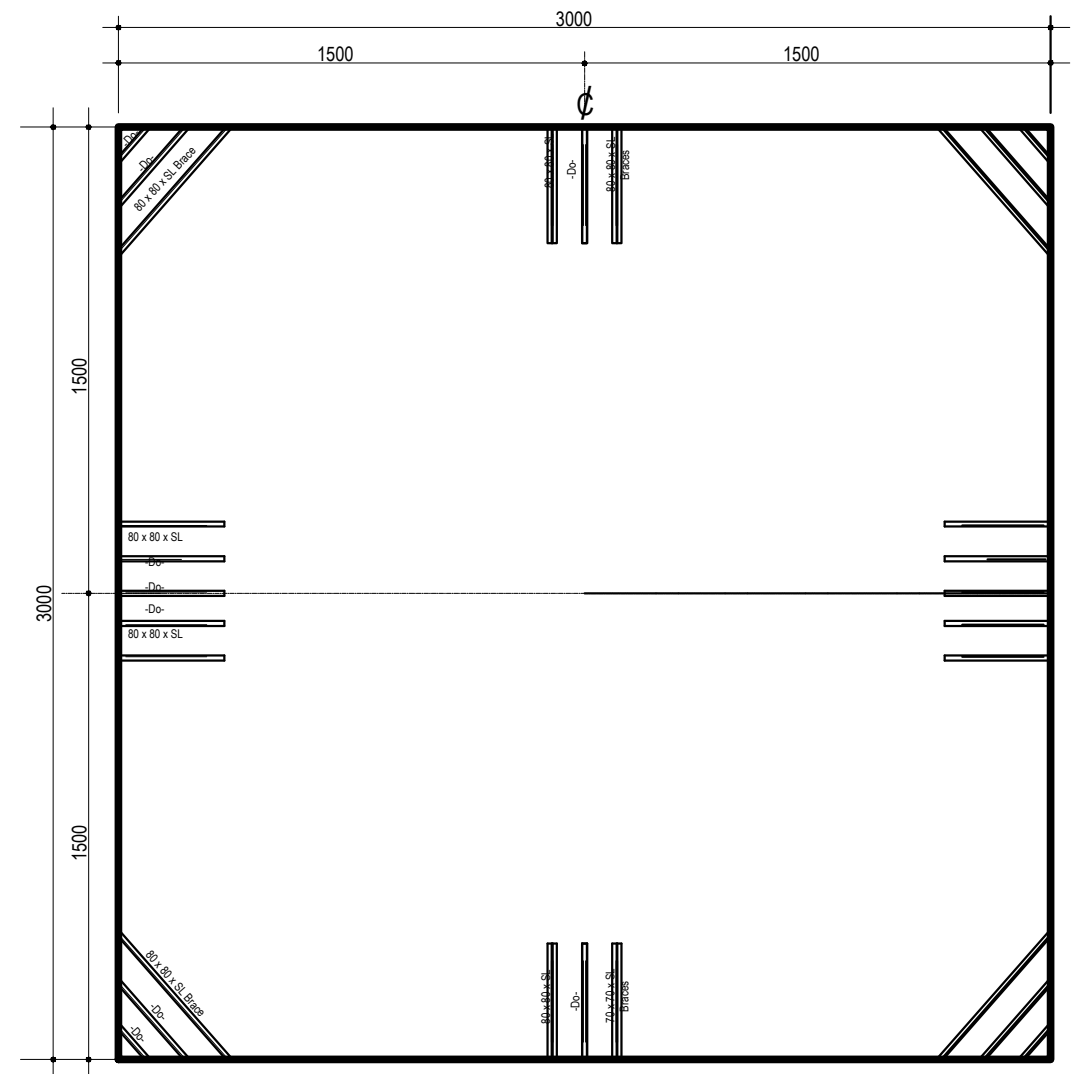


**DETAIL-A**

				<div>CLIENT:</div> <div>USAID/MERCY CORPS</div>	<div>PROJECT</div> <div>ENGINEERING DESIGN OF WASH FACILITIES ACROSS BORNO, ADAMAWA AND YOBE (BAY) STATES</div> <div>Service Contract No: YOL SC 14</div>	<div>SMALL TOWN</div> <div>DUMNE</div>	<div>DRAWING TITLE</div> <div>DUMNE HEALTH CENTER WATER SCHEME</div>		<div>Designed:</div> <div>Engr Soji</div>	<div>STAMP</div>
							<div>Drawn :</div> <div>Damola</div>			
							<div>Traced :</div>			
				<div>CONSULTANT</div> <div><div><div>K</div></div><div><div>KONSADEM ASSOCIATES LTD</div><div>Engineers &amp; Consultants</div><div>30, Onireke Layout, P.M. B. 5478, Ibadan, NIGERIA. E-mail:konsadem@gmail.com</div></div><div><div>2ML CONSULTING NIGERIA LTD</div><div>Office 8, B1-Close Off 69(A) Road Gwarinpa Abuja,</div><div><div>2ML</div></div></div></div>	<div>STATE</div> <div>ADAMAWA</div>	<div>ELEVATED STORAGE TANK 25 Cu.m)</div> <div>TANK DETAILS</div>	<div>Checked :</div> <div>Engr Soji</div>	<div>Date :</div> <div>MAY 2021</div>		
Mark :	Date :	Made by :	Revision	<div>DRAWING NO.</div> <div>BB/BD/O3</div>	<div>SCALE</div>		<div>Ref. No:</div> <div>USAID/BAY/BU-00</div>			



				CLIENT:  USAID/MERCY CORPS	PROJECT  ENGINEERING DESIGN OF WASH FACILITIES ACROSS BORNO, ADAMAWA AND YOBE (BAY) STATES  Service Contract No: YOL SC 14	SMALL TOWN  DUMNE	DRAWING TITLE  DUMNE HEALTH CENTER WATER SCHEME  ELEVATED STORAGE TANK 25 Cu.m) FOOTING DETAILS	Designed: Engr Soji Drawn : Damola Traced : Checked : Engr Soji Date : MAY 2021	STAMP	
CONSULTANT				KONSADM ASSOCIATES LTD  Engineers & Consultants 30, Onireke Layout, P.M. B. 5478, Ibadan, NIGERIA. E-mail: konsadem@gmail.com	2ML CONSULTING NIGERIA LTD  Office 8, B1-Close Off 69(A) Road Gwarinpa Abuja,		STATE  ADAMAWA	DRAWING NO.  BB/BD/04	SCALE	Ref. No:  USAID/BAY/BU-00
Mark : Date : Made by : Revision										

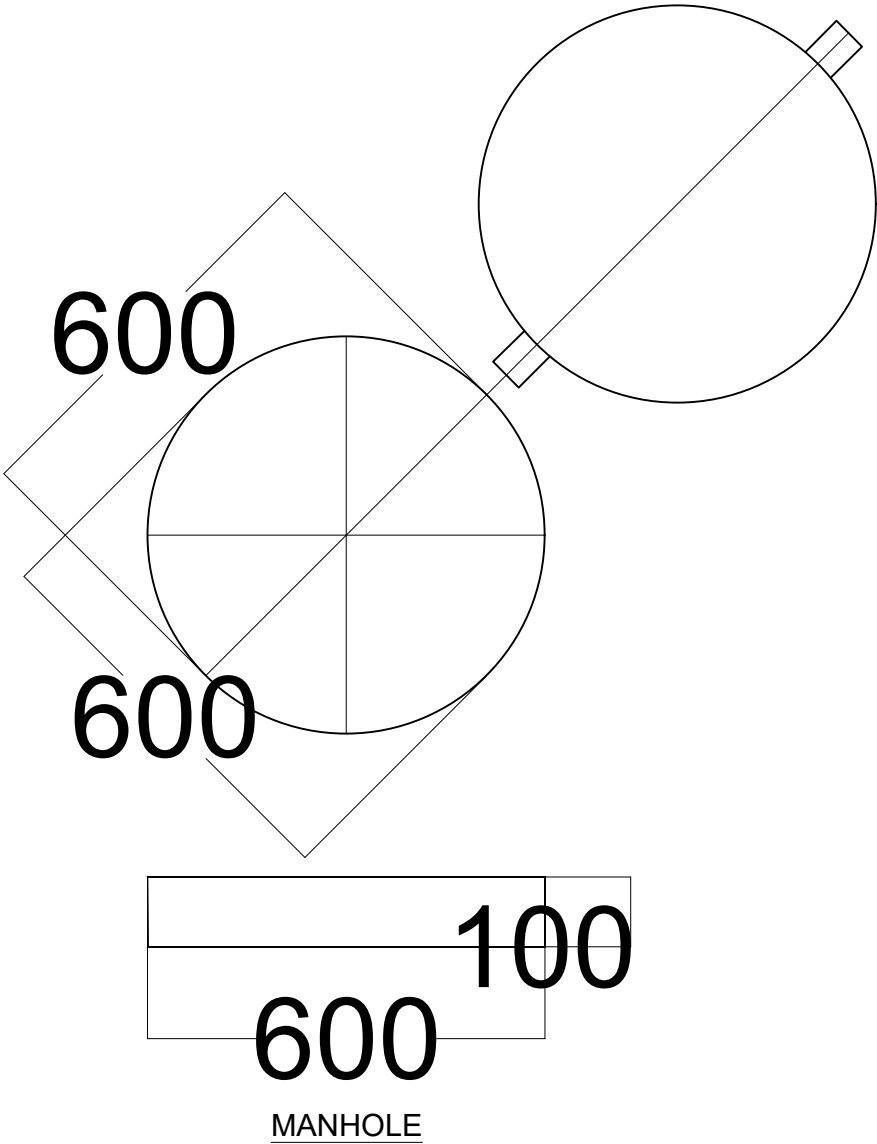
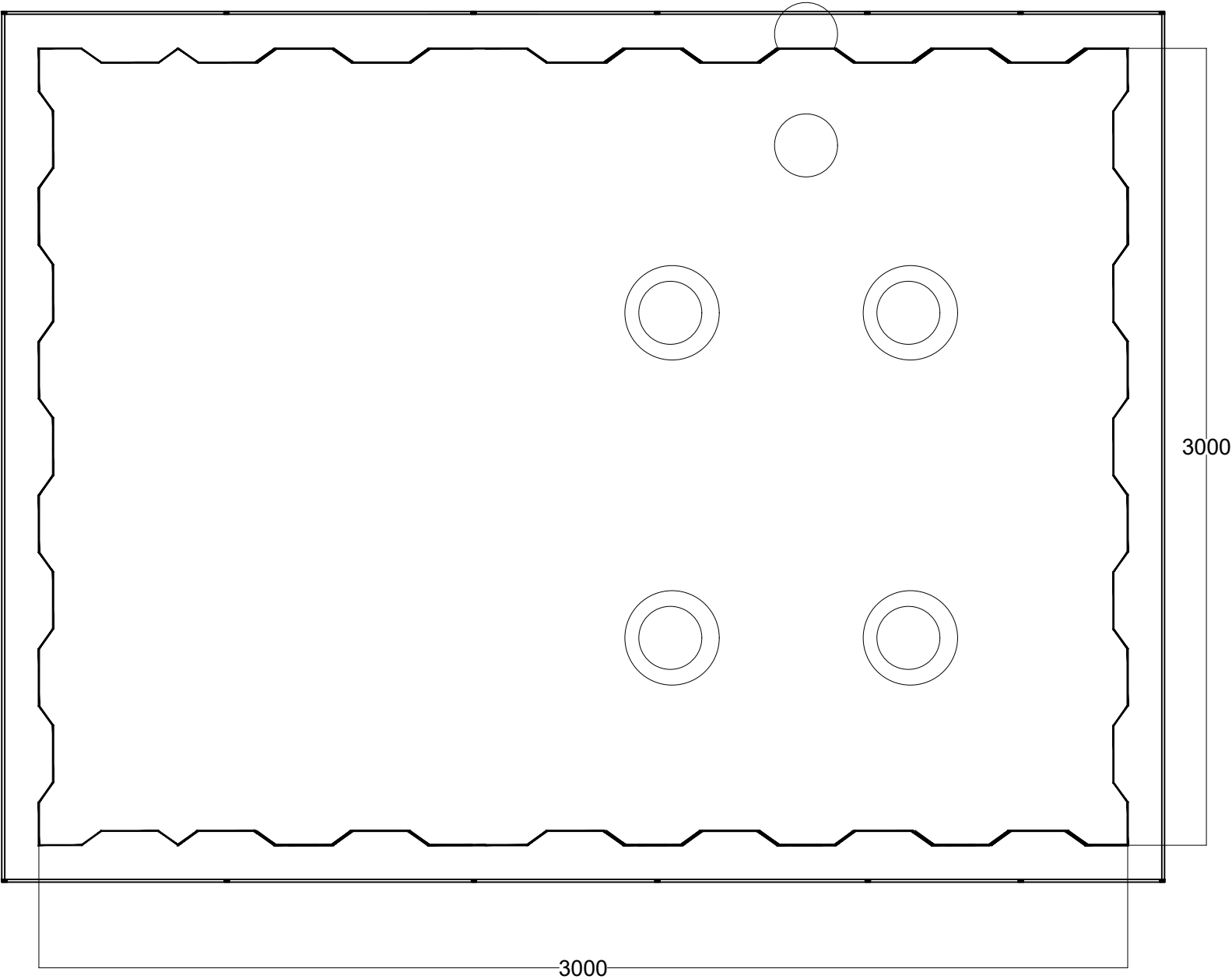


### PLAN SHOWING INTERNAL BRACES



All bolts connected to gusset plates to be 16mm dia,grade 8.8

DETAILS AT 'B' DETAILS AT 'B'



NOTES

- 1. CONCRETE GRADE = 25
- 2. STEEL GRADE = 43
- 3. SOIL BEARING CAPACITY(ASSUMED) = 150KN/m²
- 4. WIND LOADING CONDITIONS = 40m/s²
- 5. ELECTRODE: A fox 3.10/4.00mm  
5mm thick fillet weld on body panels  
10mm thick butt welding on base.

- PAINTING
- a. Internal section of tank with 1 coat of epoxy primer followed by 2 coats asphaltine paint.
  - b. External surface of tank including the access ladder and ventilation beams with with red oxide base followed by 2 coats of HR aluminum paint (5200)

				CLIENT:	USAID/MERCY CORPS	PROJECT	SMALL TOWN	DRAWING TITLE	Designed: Engr Soji	STAMP
				CONSULTANT	KONSADEM ASSOCIATES LTD	ENGINEERING DESIGN OF WASH FACILITIES ACROSS BORNO, ADAMAWA AND YOBE (BAY) STATES	DUMNE	DUMNE HEALTH CENTER WATER SCHEME	Drawn : Damola	
					2ML CONSULTING NIGERIA LTD	Service Contract No: YOL SC 14		ELEVATED STORAGE TANK 25 Cu.m)	Traced : Engr Soji	
						Office 8, B1-Close Off 69(A) Road Gwarinpa Abuja,		WATER TANK DETAILS	Checked : Engr Soji	
								DRAWING NO.	Date : MAY 2021	
								SCALE	Ref. No:	
								BB/BD/OG	USAID/BAY/BU-00	
Mark :	Date :	Made by :	Revision							



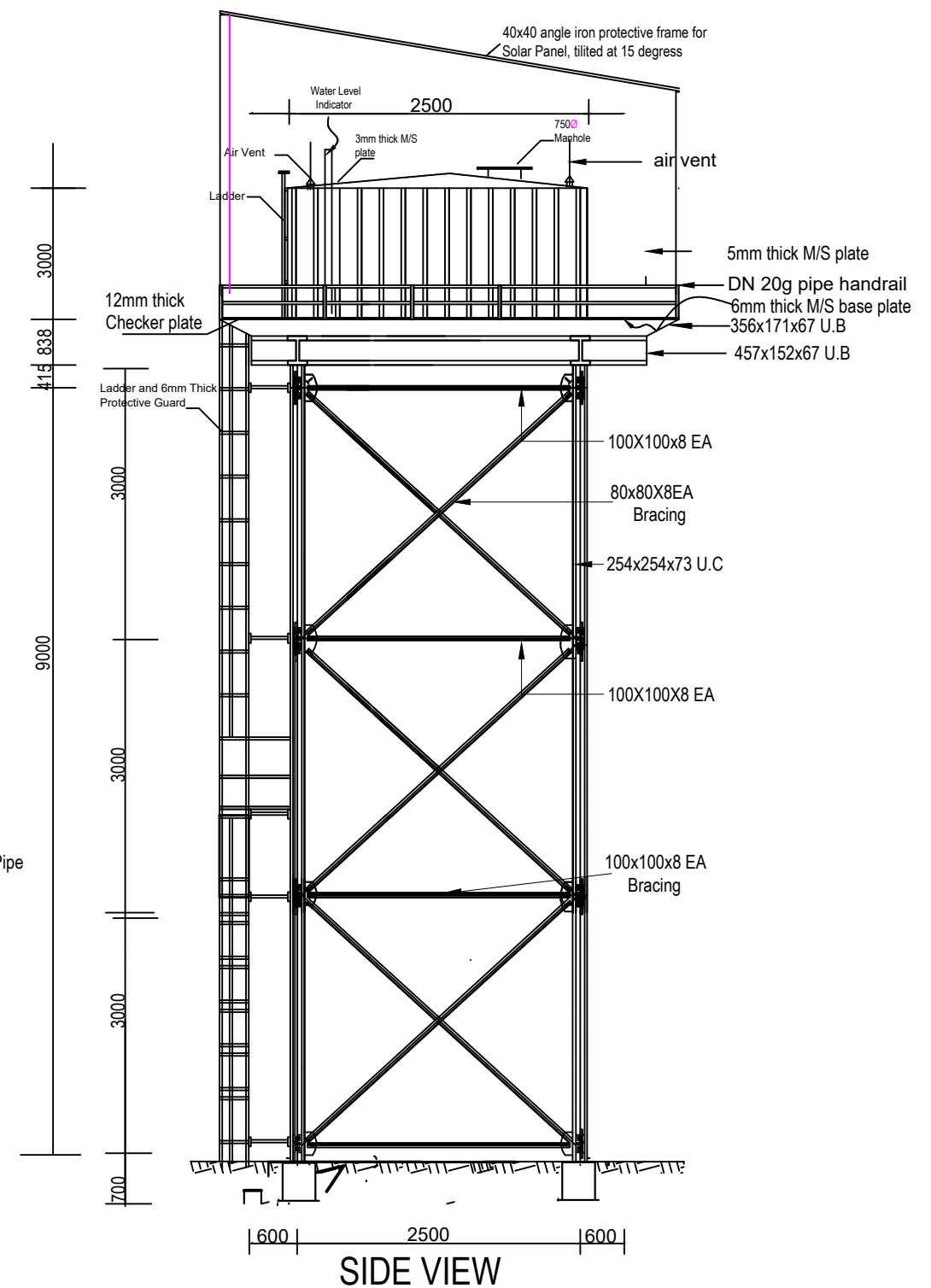
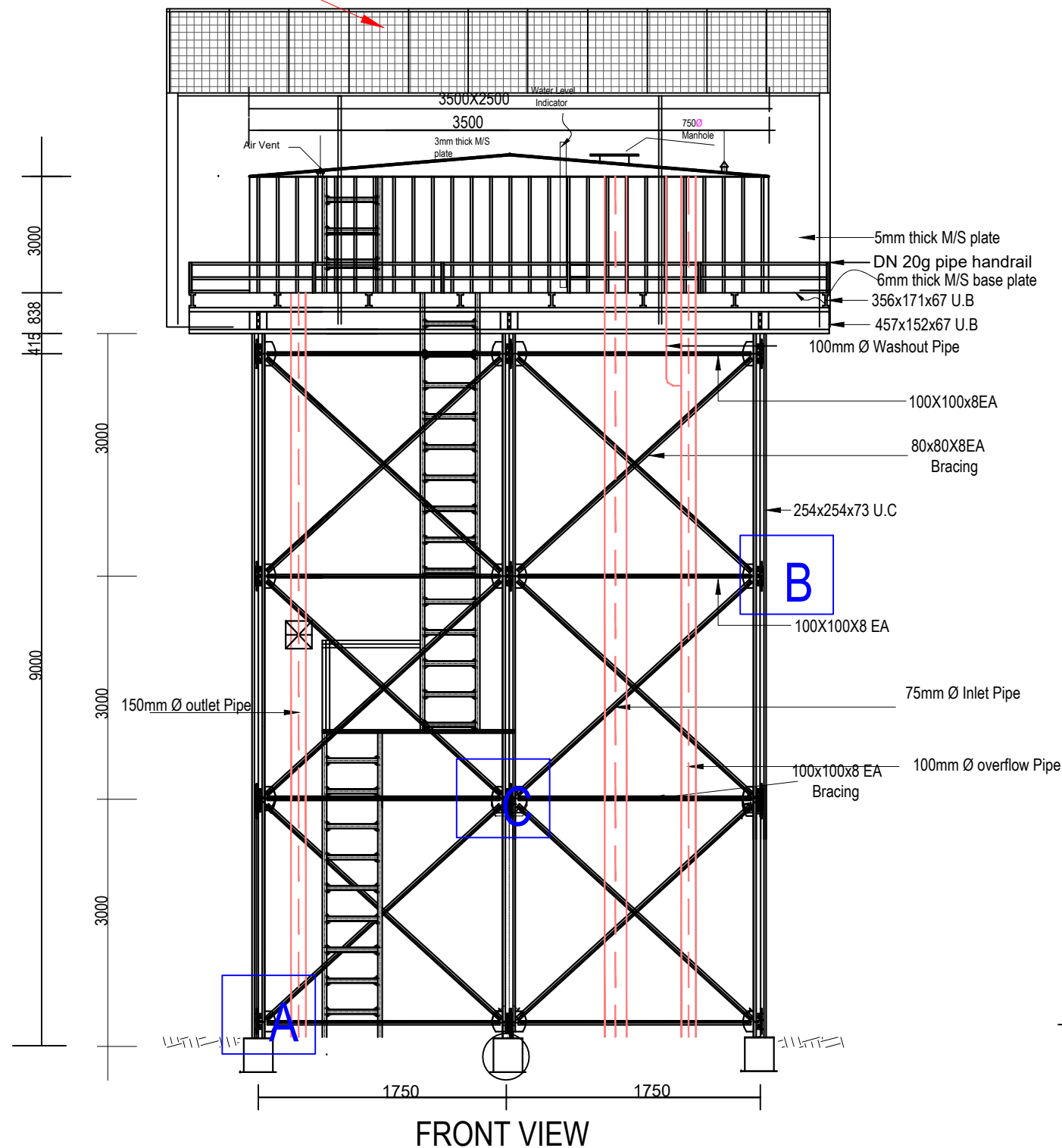




# NOTE:

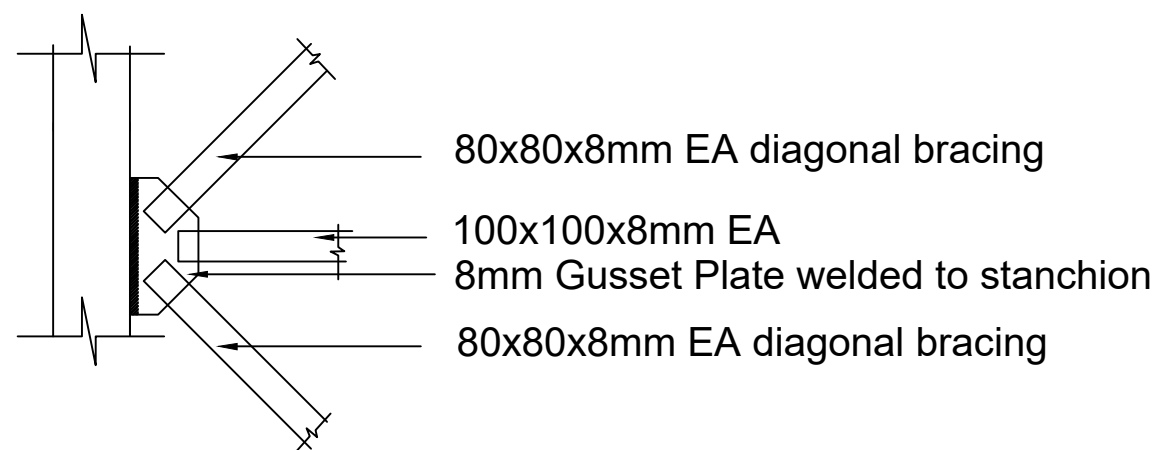
Soil bearing capacity is to be determined by contractor on site for the foundation of tower.

SOLAR PANELS

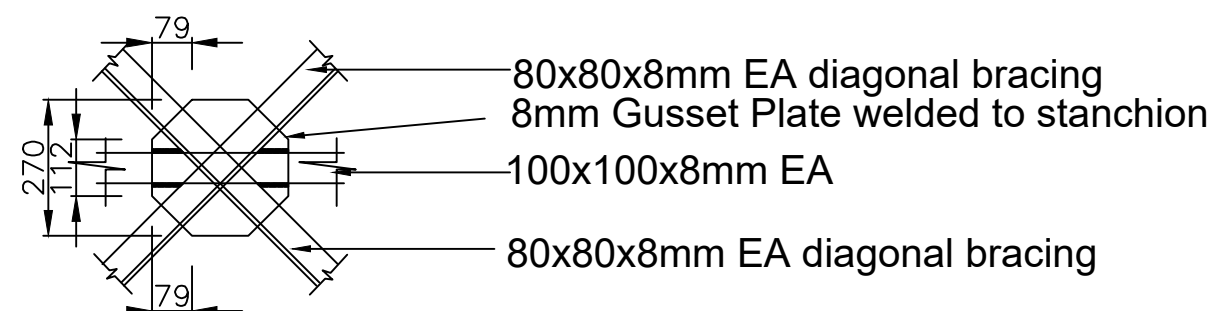


				<u>CLIENT:</u>  USAID/MERCY CORPS	<u>CONSULTANT</u>  <div><b>KONSADEM ASSOCIATES LTD</b> <i>Engineers &amp; Consultants</i> 30, Onireke Layout, P.M. B. 5478, Ibadan, NIGERIA. E-mail: konsadem@gmail.com</div> <div><b>2ML CONSULTING NIGERIA LTD</b> Office 8, B1-Close Off 69(A) Road Gwarinpa Abuja,</div> <div></div>	<u>PROJECT</u>  ENGINEERING DESIGN OF WASH FACILITIES ACROSS BORNO, ADAMAWA AND YOBE (BAY) STATES Service Contract No: YOL SC 14  <u>STATE</u>  ADAMAWA	<u>SMALL TOWN</u>  DUMNE	<u>DRAWING TITLE</u>  ZA DUMNE PRIMARY SCHOOL  ELEVATED STORAGE TANK 25 Cu.m) TANK VIEWS AND ELEVATION		<u>Designed:</u> Engr Soji	<u>STAMP</u>
								<u>Drawn :</u> Damola			
								<u>Traced :</u>			
				<u>Checked :</u> Engr Soji							
								<u>Date :</u> MAY 2021			
Mark : Date : Made by : Revision								<u>DRAWING NO.</u>  BB/BD/O2	<u>SCALE</u>	<u>Ref. No:</u>  USAID/BAY/BU-00	

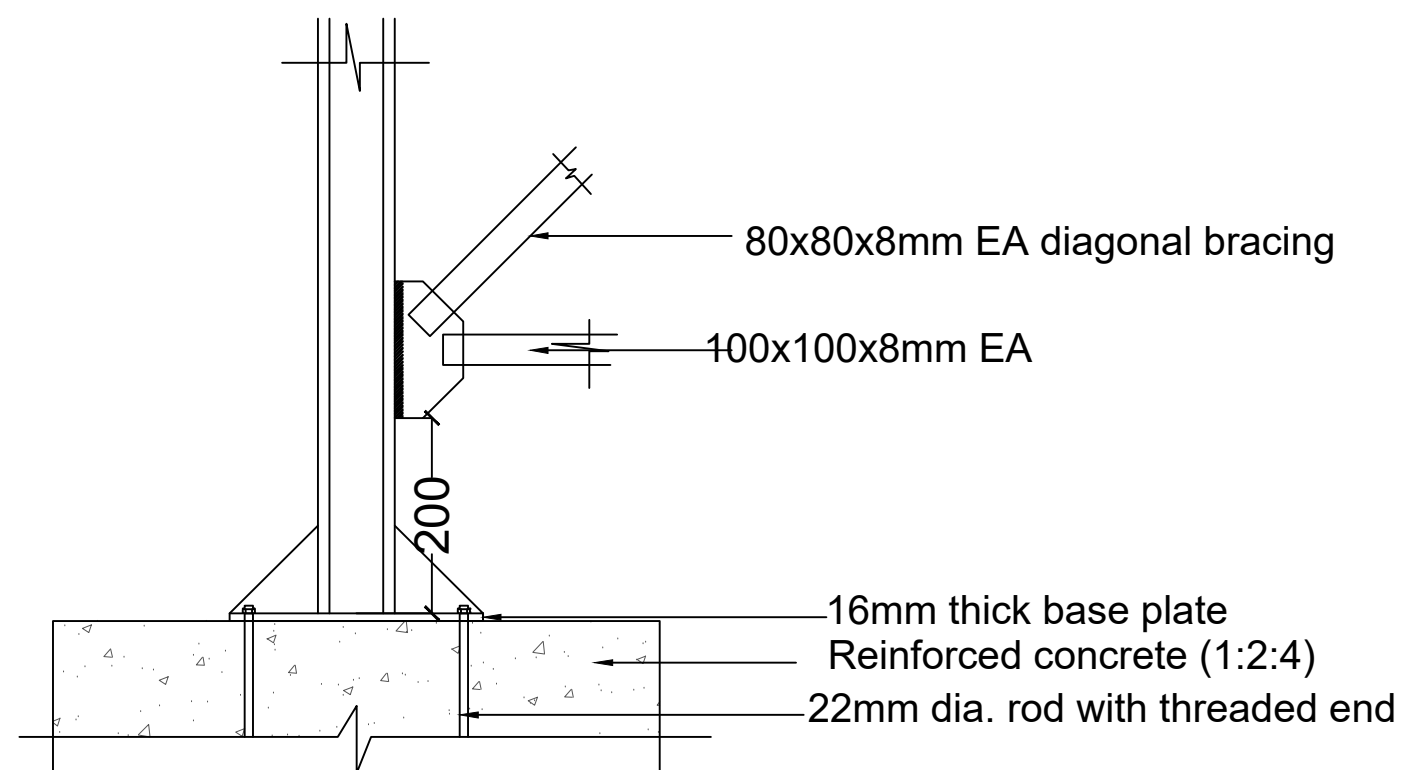




**DETAIL-B**

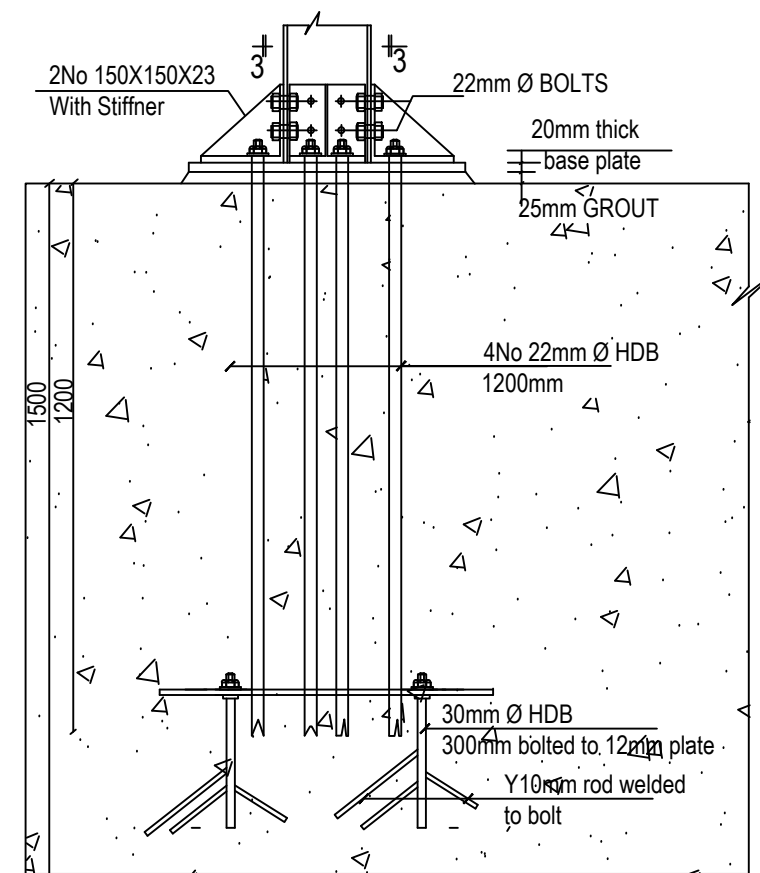
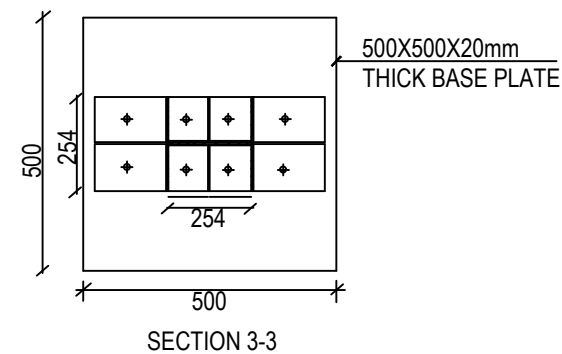
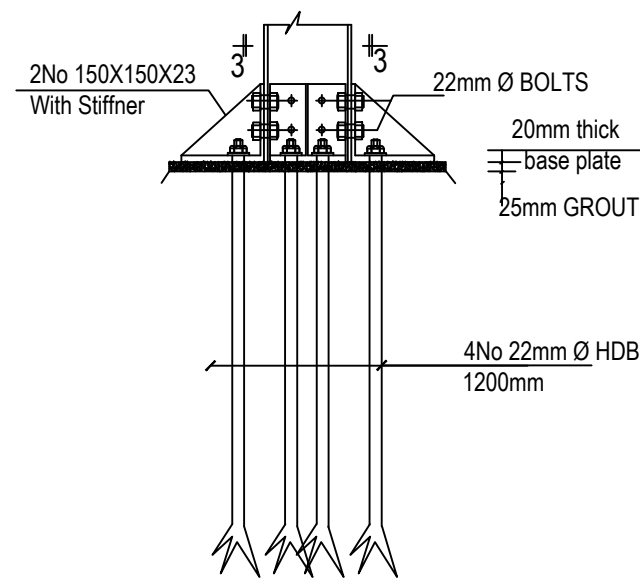
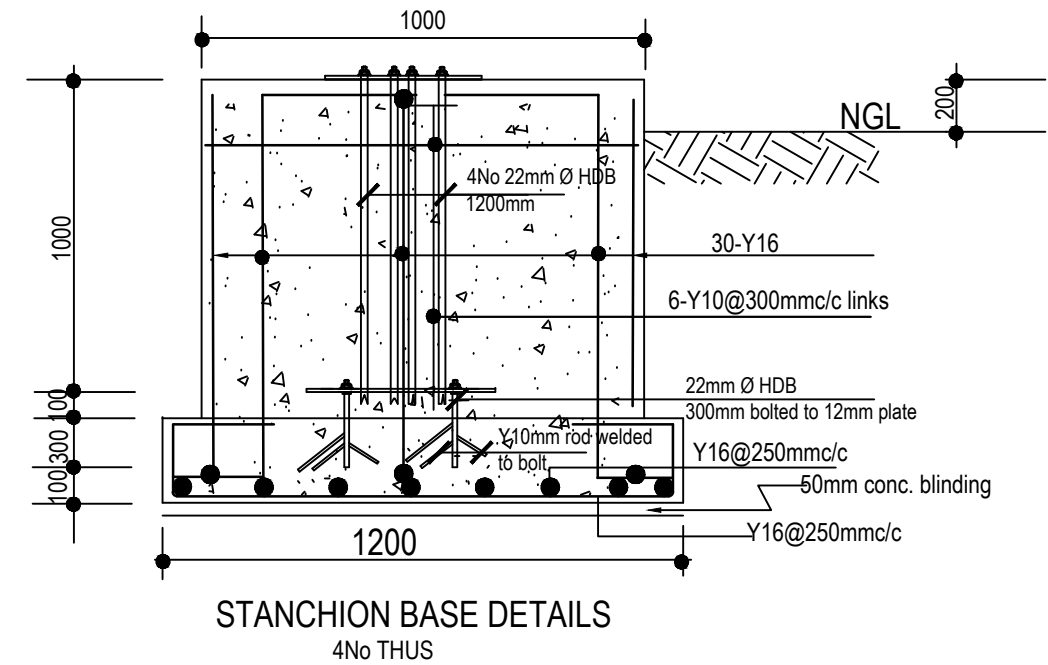
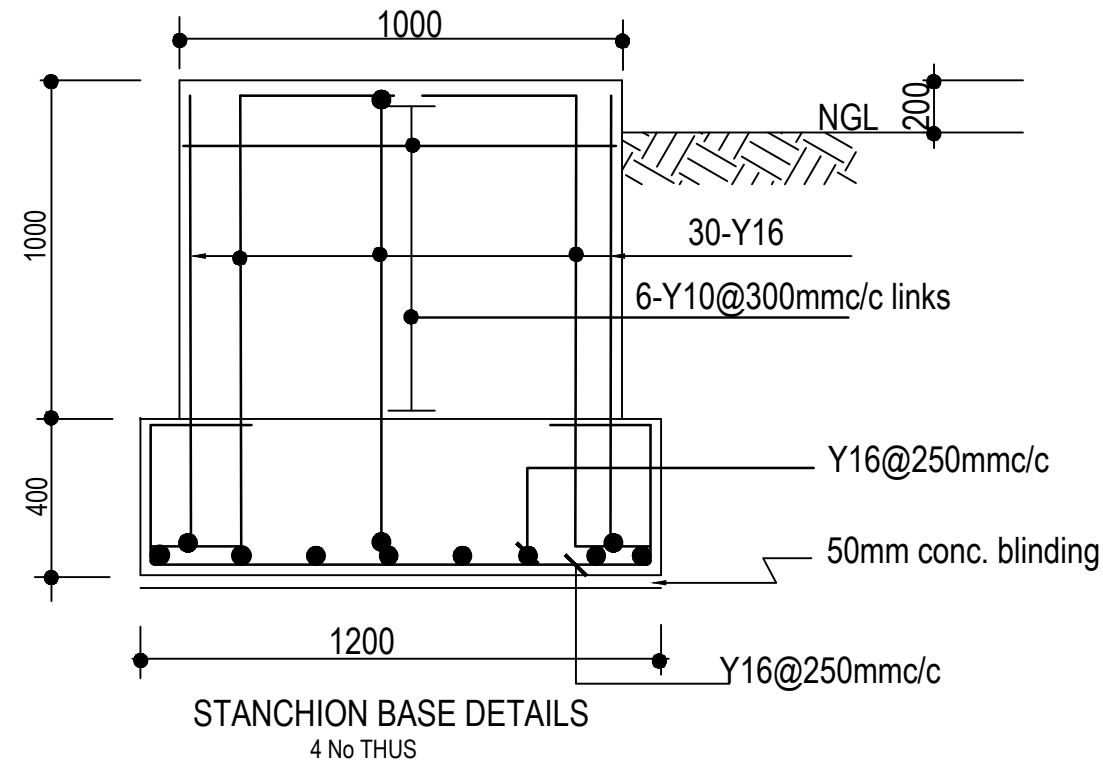


**DETAIL-C**

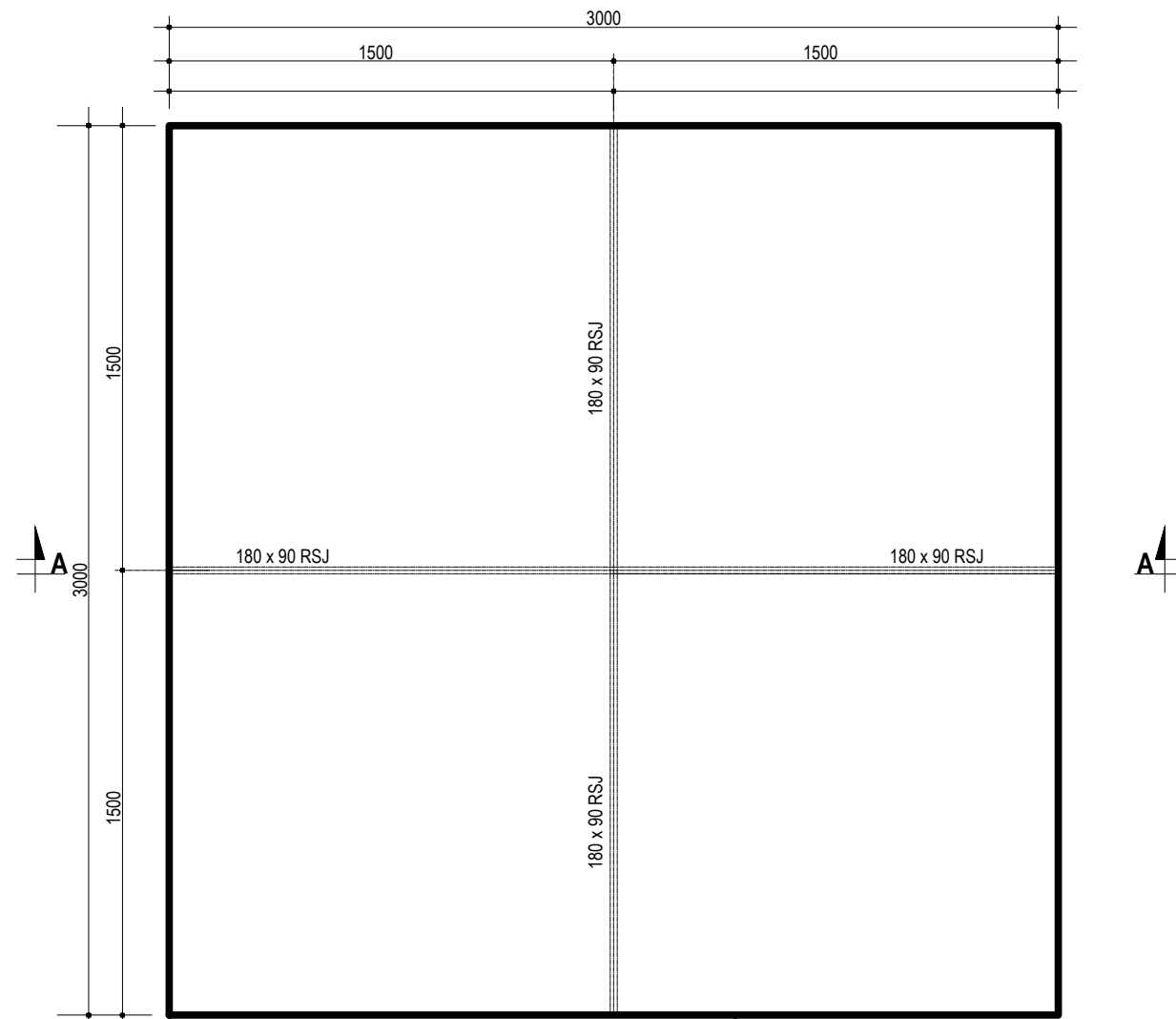


**DETAIL-A**

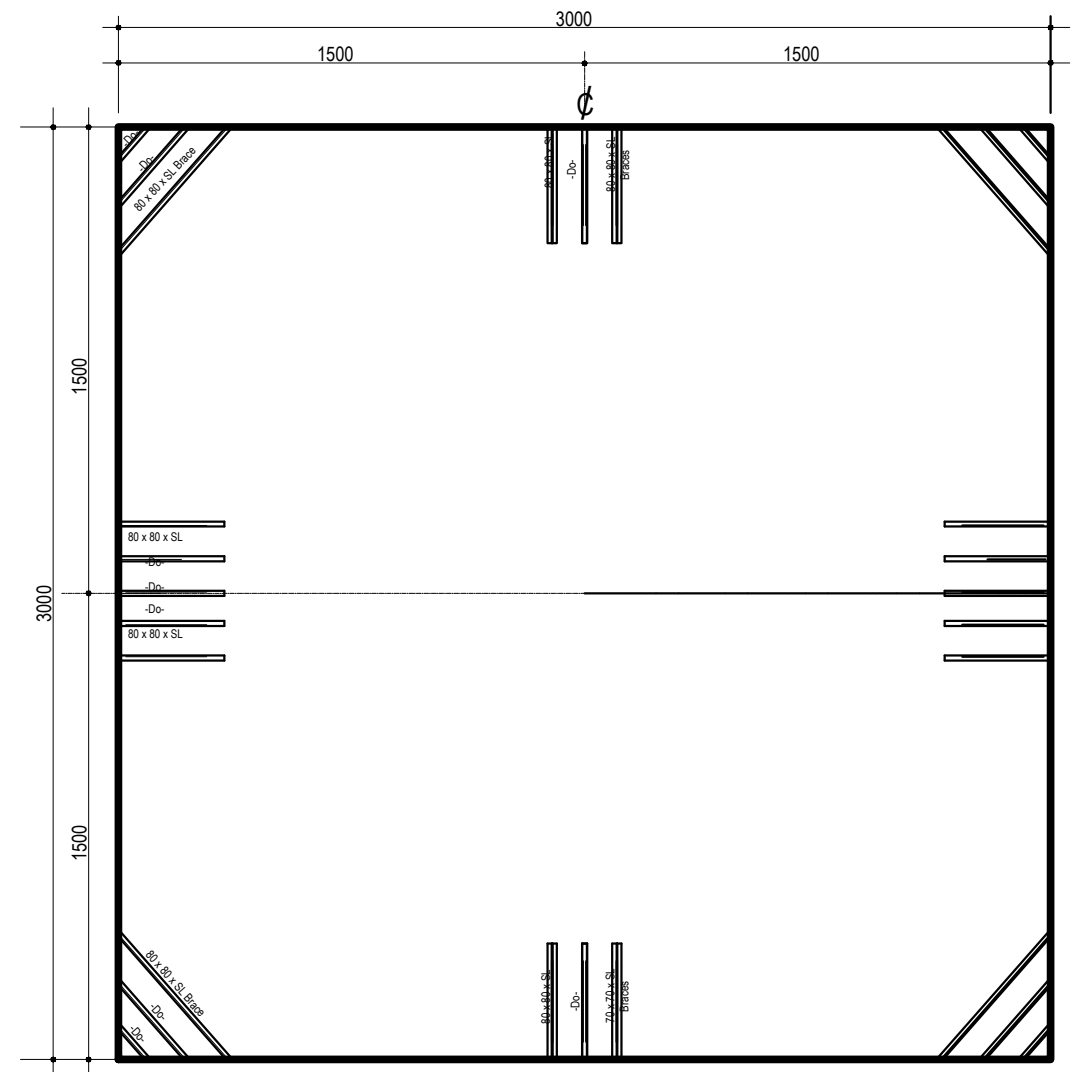
				<div>CLIENT:</div> <div>USAID/MERCY CORPS</div>	<div>PROJECT</div> <div>ENGINEERING DESIGN OF WASH FACILITIES ACROSS BORNO, ADAMAWA AND YOBE (BAY) STATES</div>	<div>SMALL TOWN</div> <div>DUMNE</div>	<div>DRAWING TITLE</div> <div>ZA DUMNE PRIMARY SCHOOL</div>	<div>Designed:</div> Engr Soji	<div>STAMP</div>
				<div>CONSULTANT</div> <div><div><div>K</div></div><div><div>KONSADEM ASSOCIATES LTD</div><div>Engineers &amp; Consultants</div><div>30, Onireke Layout, P.M. B. 5478, Ibadan, NIGERIA. E-mail:konsadem@gmail.com</div></div></div> <div><div>2ML CONSULTING NIGERIA LTD</div><div>Office 8, B1-Close Off 69(A) Road Gwarinpa Abuja,</div><div><div>2ML</div></div></div>	<div>Service Contract No: YOL SC 14</div>	<div>ELEVATED STORAGE TANK 25 Cu.m)</div> <div>TANK DETAILS</div>	<div>Drawn :</div> Damola		
					<div>STATE</div> <div>ADAMAWA</div>	<div>DRAWING NO.</div> <div>BB/BD/O3</div>	<div>Traced :</div>	<div>Checked :</div> Engr Soji	
						<div>SCALE</div>	<div>Date :</div> MAY 2021	<div>Ref. No:</div> <div>USAID/BAY/BU-00</div>	
Mark : Date : Made by : Revision									



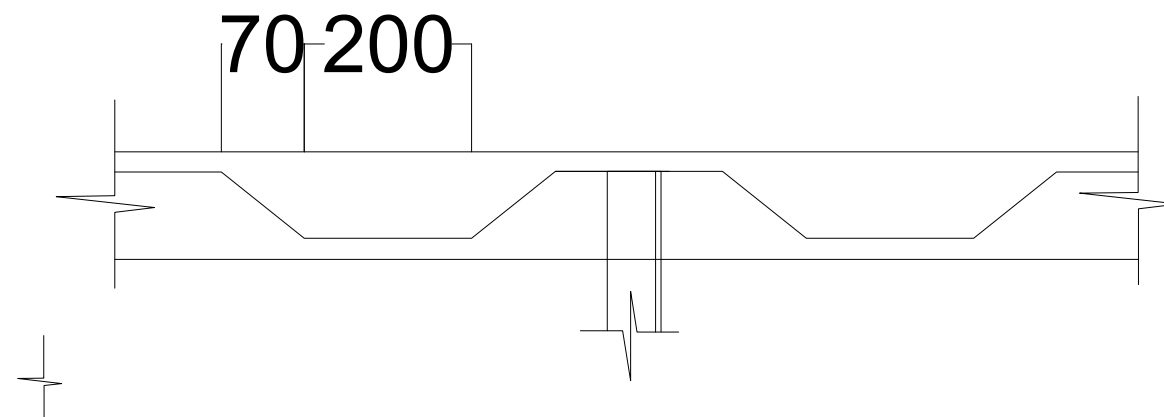
				CLIENT:	USAID/MERCY CORPS			PROJECT	SMALL TOWN	DRAWING TITLE		Designed: Engr Soji	STAMP
				CONSULTANT		KONSADEM ASSOCIATES LTD Engineers & Consultants 30, Onireke Layout, P.M. B. 5478, Ibadan, NIGERIA. E-mail: konsadem@gmail.com	2ML CONSULTING NIGERIA LTD Office 8, B1-Close Off 69(A) Road Gwarinpa Abuja,		DUMNE	ZA DUMNE PRIMARY SCHOOL		Drawn : Damola	
										ELEVATED STORAGE TANK 25 Cu.m)		Traced : Engr Soji	
										FOOTING DETAILS		Checked : Engr Soji	
Mark : Date : Made by : Revision								STATE		DRAWING NO.	SCALE	Date : MAY 2021	Ref. No: USAID/BAY/BU-00
								ADAMAWA		BB/BD/04			



PLAN OF WELDED STEEL TANK  
SHOWING INTERNAL PERTITIONING



PLAN SHOWING INTERNAL BRACES

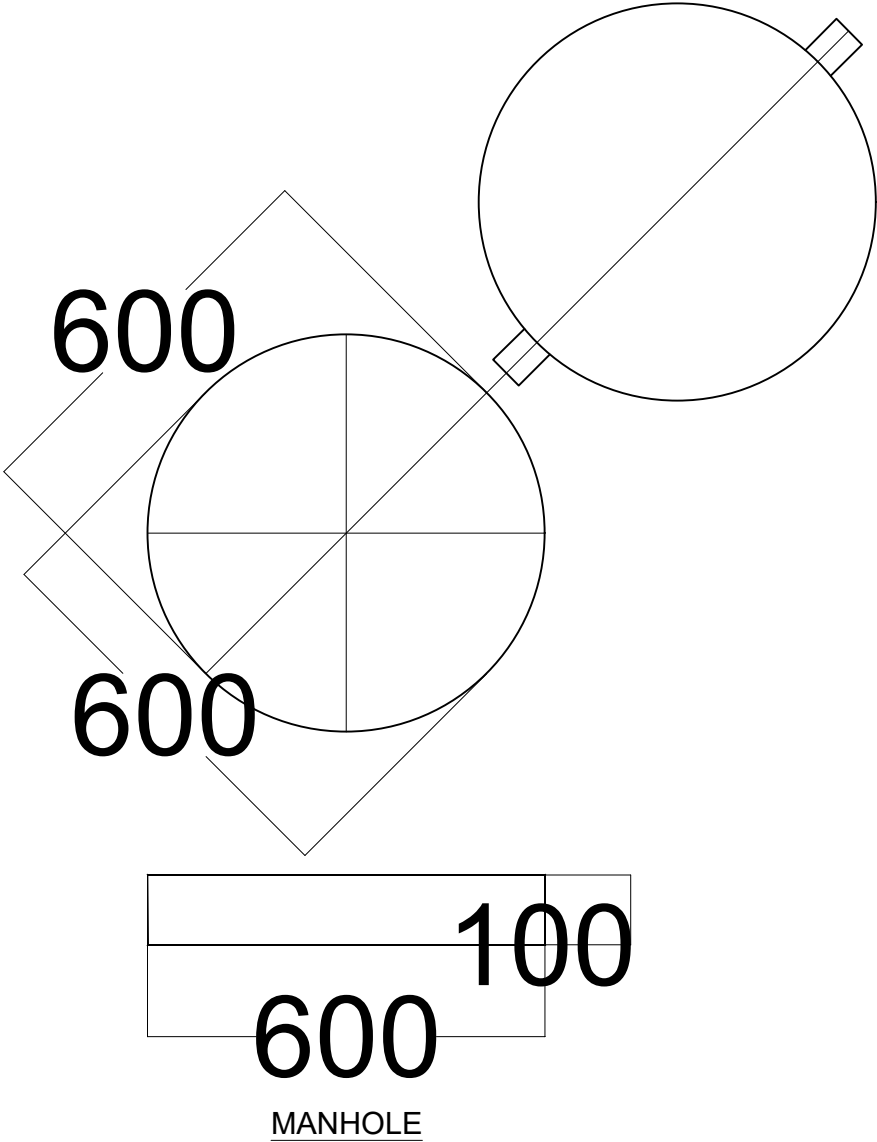
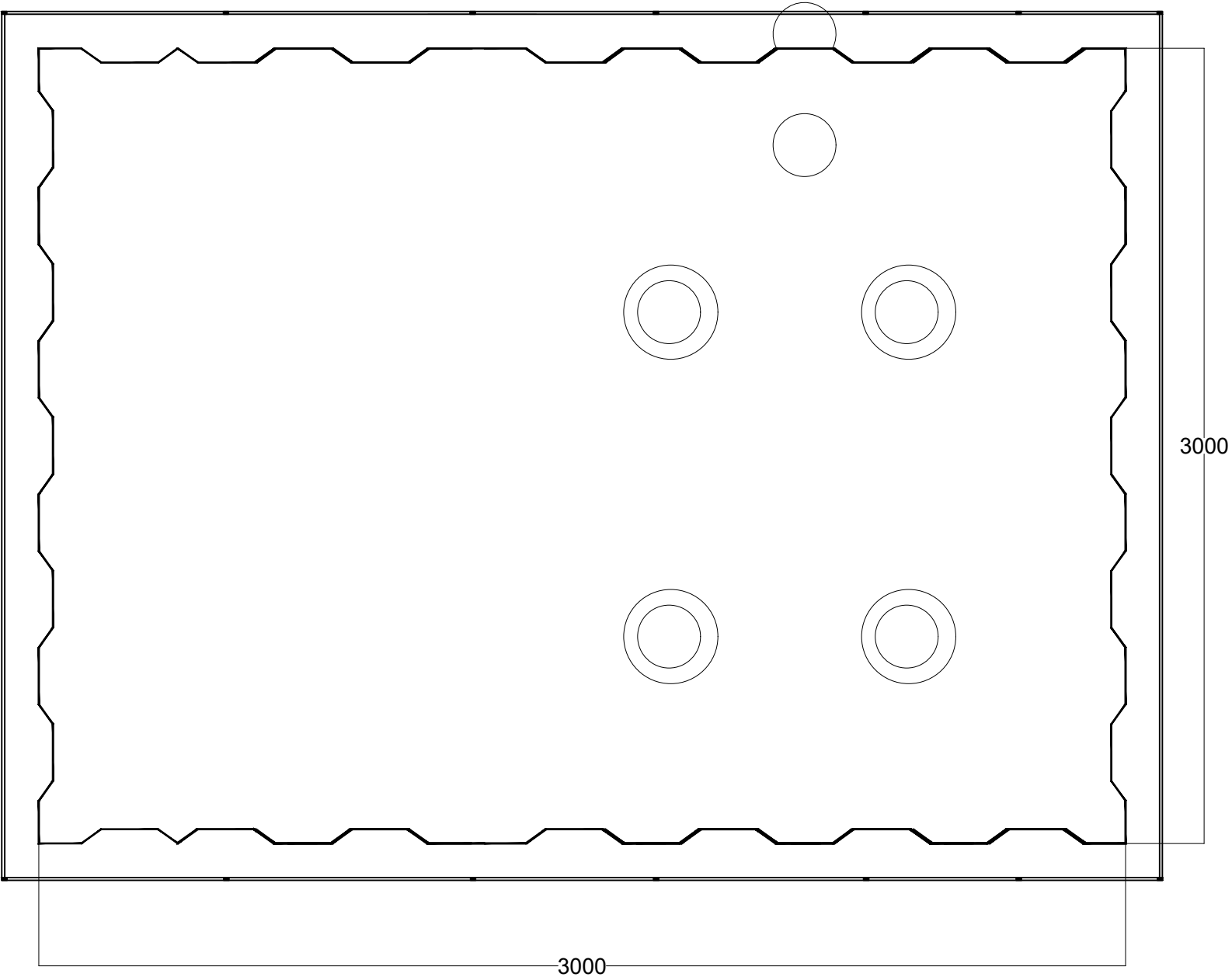


	<b>CLIENT:</b> USAID/MERCY CORPS	<b>PROJECT</b> ENGINEERING DESIGN OF WASH FACILITIES ACROSS BORNO, ADAMAWA AND YOBE (BAY) STATES	<b>SMALL TOWN</b>  DUMNE	<b>DRAWING TITLE</b> ZA DUMNE PRIMARY SCHOOL  ELEVATED STORAGE TANK 25 Cu.m)	<b>Designed:</b> Engr Soji <b>Drawn :</b> Damola	<b>STAMP</b>
	<b>CONSULTANT</b> <div> <div>  <b>KONSADEM ASSOCIATES LTD</b>  Engineers &amp; Consultants  30, Onireke Layout,  P.M. B. 5478, Ibadan, NIGERIA.  E-mail: <a href="mailto:konsadem@gmail.com">konsadem@gmail.com</a> </div> <div> <b>2ML CONSULTING NIGERIA LTD</b>  Office 8, B1-Close Off 69(A) Road  Gwarinpa Abuja, </div> </div>	Service Contract No: YOL SC 14		<b>DRAWING NO.</b> BB/BD/05	<b>Traced :</b> <b>Checked :</b> Engr Soji <b>Date :</b> MAY 2021	
<b>Mark :</b> <b>Date :</b> <b>Made by :</b> <b>Revision</b>		<b>STATE</b> ADAMAWA		<b>SCALE</b>	<b>Ref. No:</b> USAID/BAY/BU-00	

All bolts connected to gusset plates to be 16mm dia,grade 8.8

DETAILS AT 'B'

DETAILS AT 'B'

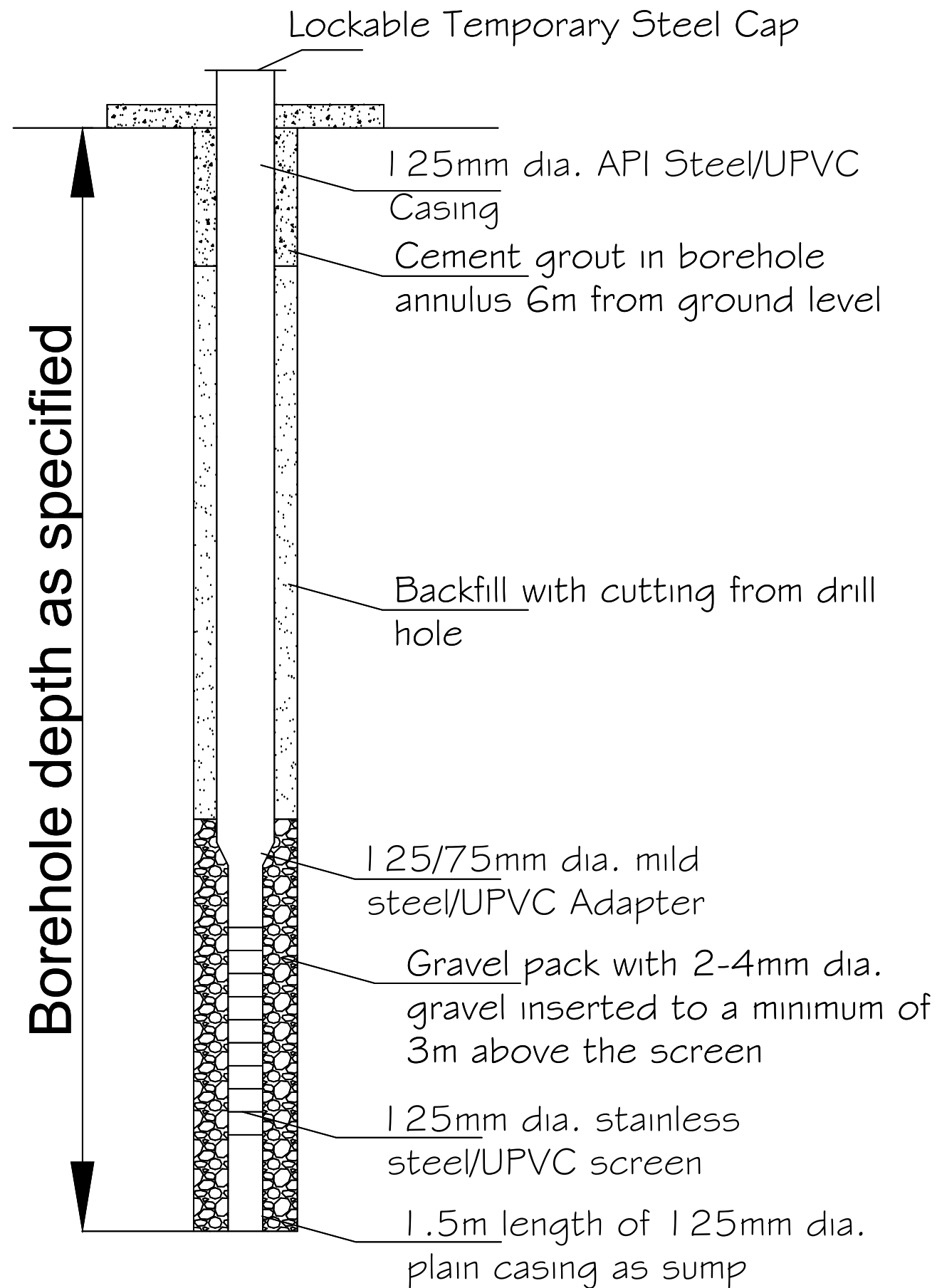


NOTES

1. CONCRETE GRADE = 25
2. STEEL GRADE = 43
3. SOIL BEARING CAPACITY(ASSUMED) = 150KN/m<sup>2</sup>
4. WIND LOADING CONDITIONS = 40m/s<sup>2</sup>
5. ELECTRODE: A fox 3.10/4.00mm  
5mm thick fillet weld on body panels  
10mm thick butt welding on base.

- PAINTING
- a. Internal section of tank with 1 coat of epoxy primer followed by 2 coats asphaltine paint.
  - b. External surface of tank including the access ladder and ventilation beams with with red oxide base followed by 2 coats of HR aluminum paint (5200)

				CLIENT:	USAID/MERCY CORPS	PROJECT	SMALL TOWN	DRAWING TITLE	Designed: Engr Soji	STAMP
				CONSULTANT	KONSADEM ASSOCIATES LTD	ENGINEERING DESIGN OF WASH FACILITIES ACROSS BORNO, ADAMAWA AND YOBE (BAY) STATES	DUMNE	ELEVATED STORAGE TANK 25 Cu.m)	Drawn : Damola	
					2ML CONSULTING NIGERIA LTD	Service Contract No: YOL SC 14		WATER TANK DETAILS	Traced : Engr Soji	
						STATE		DRAWING NO.	Checked : Engr Soji	
						ADAMAWA		SCALE	Date : MAY 2021	
									Ref. No:	
									USAID/BAY/BU-00	
Mark :	Date :	Made by :	Revision							



				CLIENT:	USAID/MERCY CORPS	PROJECT	SMALL TOWN	DRAWING TITLE	Designed: Engr Soji	STAMP
				CONSULTANT	<b>KONSADEM ASSOCIATES LTD</b> Engineers & Consultants 30, Onireke Layout, P.M. B. 5478, Ibadan, NIGERIA. E-mail: <a href="mailto:konsadem@gmail.com">konsadem@gmail.com</a>	ENGINEERING DESIGN OF WASH FACILITIES ACROSS BORNO, ADAMAWA AND YOBE (BAY) STATES Service Contract No: YOL SC 14	DUMNE	ZA DUMNE PRIMARY SCHOOL	Drawn : Damola	
					<b>2ML CONSULTING NIGERIA LTD</b> Office 8, B1-Close Off 69(A) Road Gwarinpa Abuja,	STATE		BOREHOLE DETAILS	Traced : Checked : Engr Soji Date : MAY 2021	
Mark :	Date :	Made by :	Revision			ADAMAWA		DRAWING NO.	SCALE	Ref. No:
									BB/BD/07	USAID/BAY/BU-00